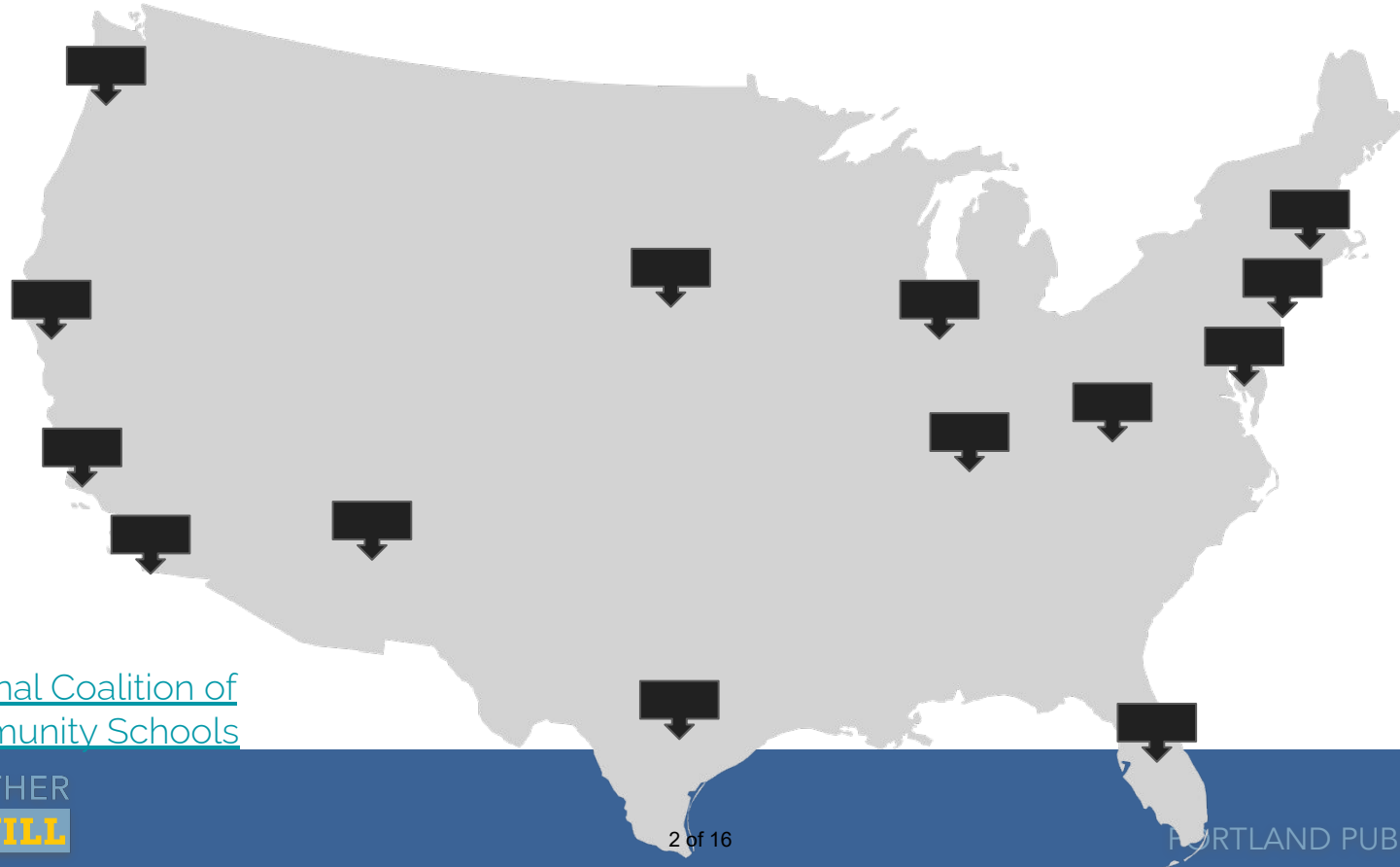


# **SUN** Community School & Service System

# Community Schools Nationally



[National Coalition of  
Community Schools](#)



TOGETHER  
**WE WILL**

# What is a Community School



A school **where the community and partners** from across the broader community

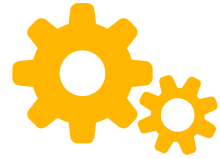
**come together** to educate and support kids creating a **collective impact**

Community resources are **strategically organized** to support student success

There is a **focus on the whole child**, integrating academics, services, supports and opportunities



# SUN Community Schools



**A Strong Core  
Instructional  
Program**



**Expanded Learning  
Opportunities for  
youth and families**



**Authentic and  
culturally responsive  
paths for family  
engagement**



**Wrap around and  
integrated services  
including social,  
health and mental  
health resources**



**Shared leadership  
with families and  
the community**





# SUN Service System

It's not just SUN Community Schools



TOGETHER  
**WE WILL**

An aligned **system of care**, providing the social and support services to youth, and families, that lead to **educational success and self-sufficiency.**



# SUN Service System

## SUN Community School

- Service brokering and access
- Service coordination for students and families
- Partner Coordination
- Service access/information referral
- Extended-day Programming

## SUN Youth Advocates

- Advocates work one-on-one with their caseload of middle and high school-aged youth
- Check in by phone and virtual means to support distance learning and support families' social service immediate & pressing needs

## Family Resource Navigators

- Work with families in identifying, allocating, coordinating supporting resources
- Food and basic supply needs, rent & utility assistance, educational supports, skills building, youth and family engagements

## Food Pantry

- Partnership with Oregon Food Bank and SUN partners
- Weekly food distribution for families at 20 sites
- Transitioning back to 29 sites with weekly/monthly distributions





# SUN & PPS

SUN and it's connection to PPS, RESJ & PPS's Strategic Plan, and Instructional Framework





# Forward Together: PPS's Strategic Plan & SUN

## Theme 1: RESJ Strategic Outcomes

- **Reimagine Relationships and Sense of Belonging** - Students develop **strong sense of belonging**, and we foster safe, healthy and positive learning and working environments.
- **Ensure Equitable Access to Facility Resources** - Reimagined use of space to provide more **equitable access to facilities and supporting resource**, enabling greater options for student success

## Theme 2: Inclusive and Differentiated Learning for Every Child

- **Implement Multi Tiered System of Supports** - Our strongly aligned system of tiered supports provides progressively targeted and **individualized supports** for students, based on student data, decision criteria, educator **collaboration**, and using evidenced-based academic, **social-emotional, and behavioral interventions that are culturally responsive** and eliminate barriers to learning.

## Theme 4: Embracing Change Strategic Outcomes

- **Build A Collective Sense of Trust and Belonging** - Our **educators and community collectively** foster an environment of belonging, trust, and **shared ownership for the success** of our students, educators, and school district
- **Cultivate and Promote Aligned Community Partnerships** - Our **partnerships equitably support our students** to achieve the [Graduate Portrait](#)



# PPS Partnership Strategies & SUN



## Partnership Investment Strategy:

Intentionally partnering with culturally specific and multiracial organizations.

## RESJ Partnership Strategies & SUN

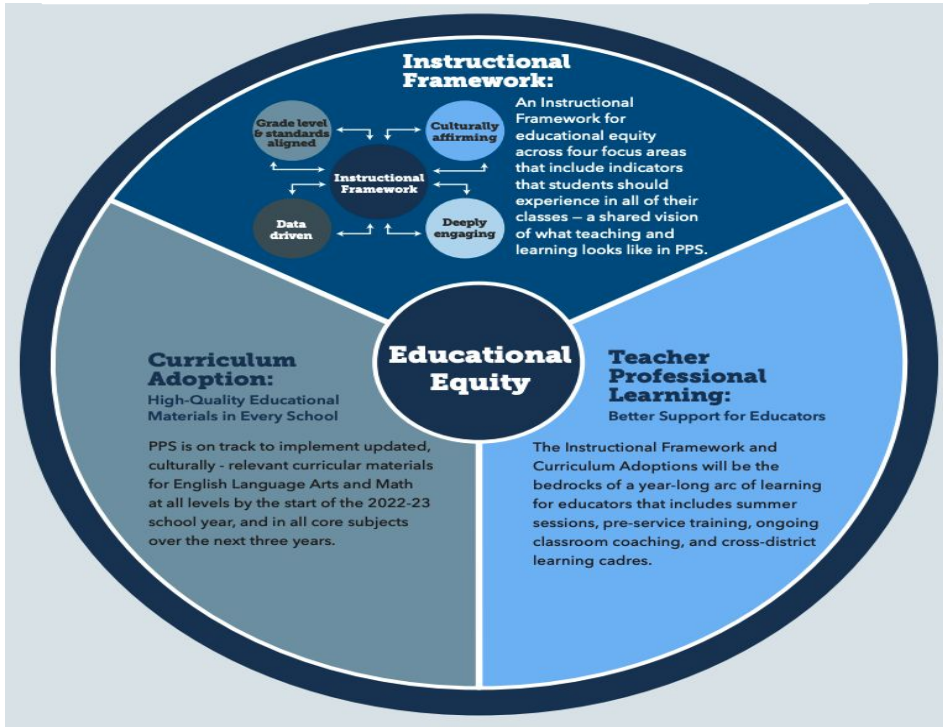
1. Culturally Specific Family Engagement (Family Resource Navigators, Family Engagement Events, Classes & Activities)
2. Wrap Around Services ( CBO network of services: Rental/Utility Assistance, Connection to Student Health Centers, Mental Health Resources, Food Pantries)
3. Mentoring and Leadership Development (SUN Youth Advocates [SYA], Relationship Building, Leadership Skills)
4. Enrichment and Extended Learning (SUN Extended Day Programming)
5. Positive Cultural ID Development (CBO SUN Agencies, SYA)



# PPS Instructional Framework & SUN



## PPS Roadmap Towards Educational Equity



## Educational Equity

- **Instructional Framework**
- Teacher Professional Learning
- Curriculum Adoption

## Instructional Framework

- Grade Level & Standards Aligned
- Data Driven
- **Culturally Affirming**
- Deeply Engaging



TOGETHER  
WE WILL



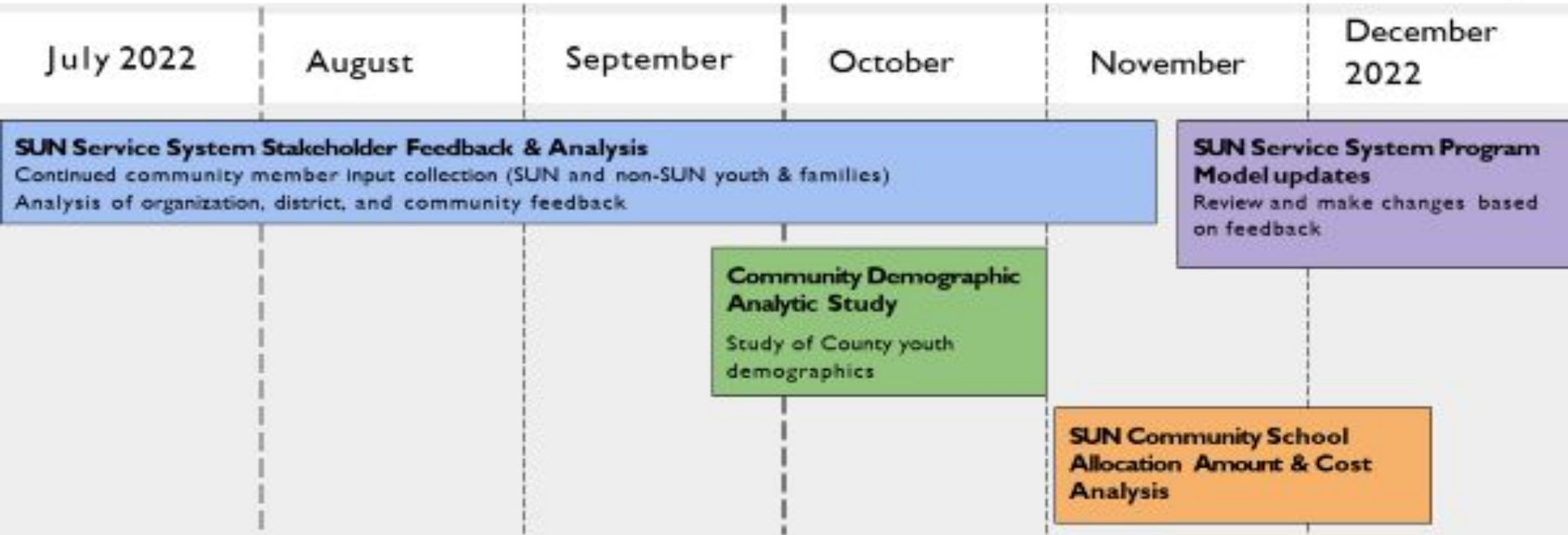
# SUN RFP Timeline

Multnomah County SUN Request for Proposal Timeline

# SUN Service System Procurement Process Timeline 2022

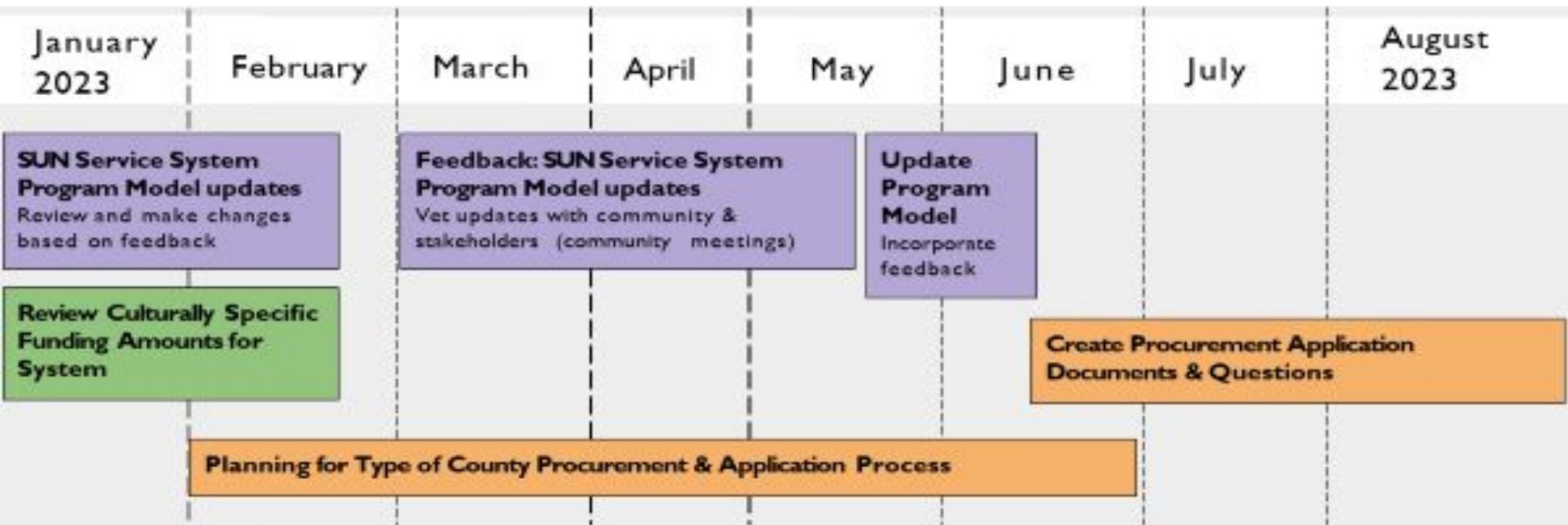
page one

All dates subject to change. County will release updates as needed. 9.16.2022



# SUN Service System Procurement Process Timeline 2023

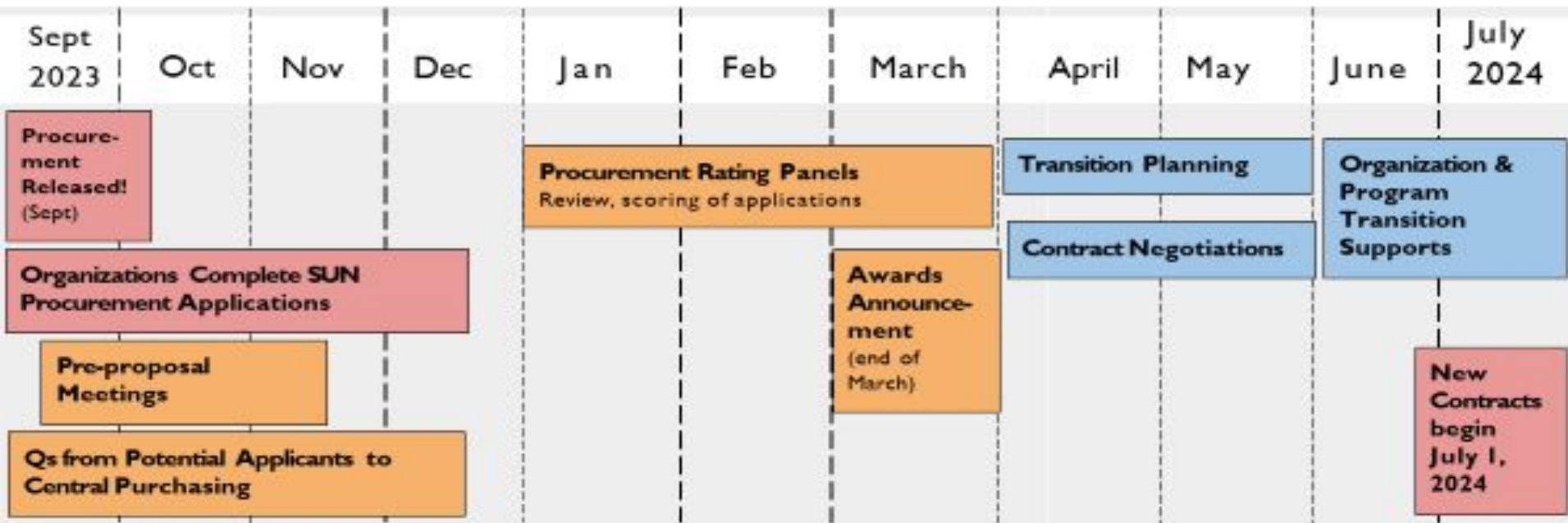
page two





# SUN Service System Procurement Process Timeline 2023-2024

page three





# Questions?

