

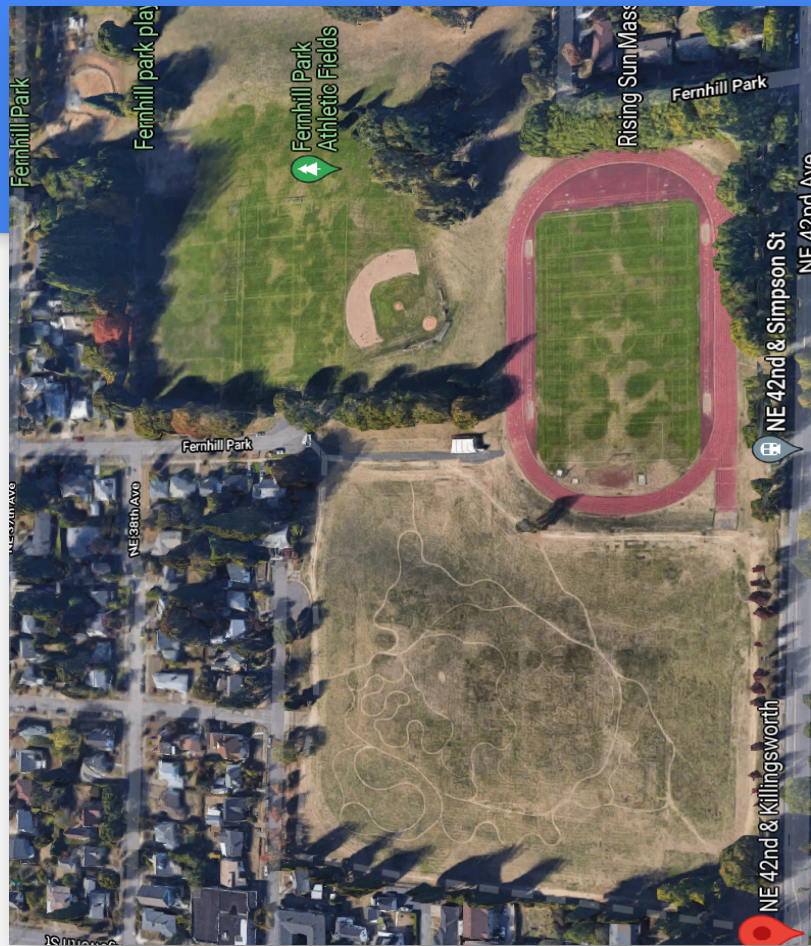
# Albina Sports Complex

...an investment for Portland's future



# The Vision

# Albina Sports Complex....A community transformation

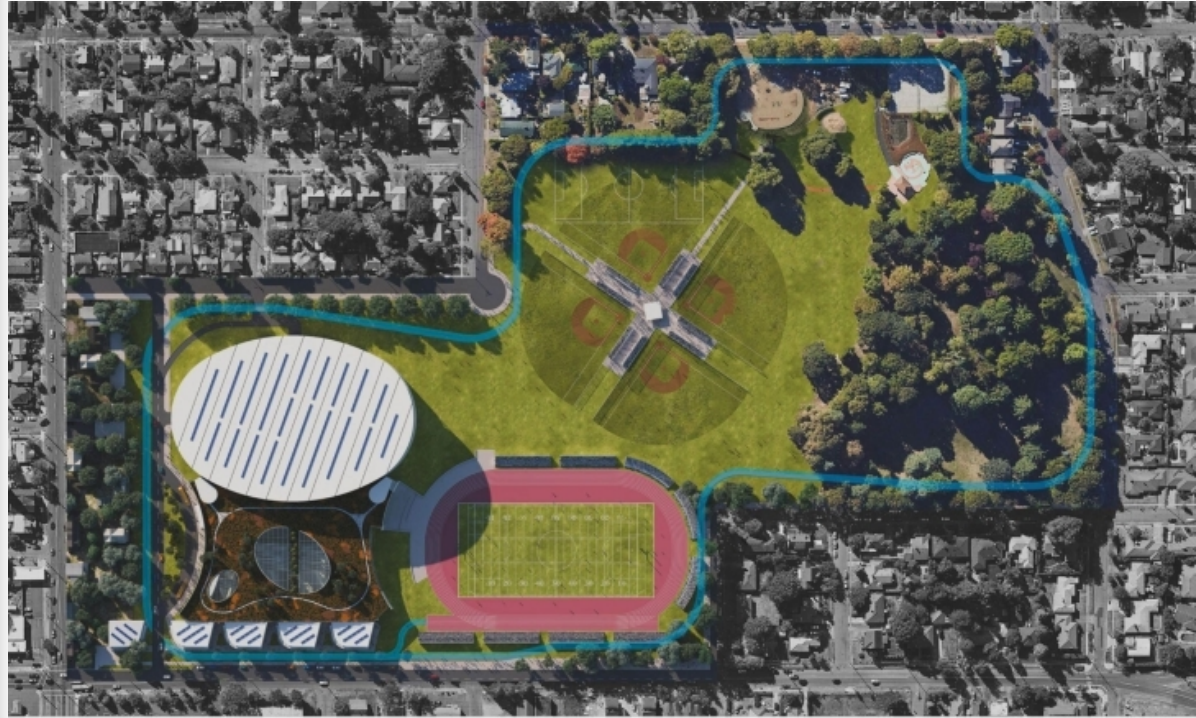


# Benefits to the Local Community & the City

- State of the Art Facilities
- Located in the Heart of PPS District
- Access for all 49,000+ PPS kids
- Accessibility: Complex located on two Major Bus Routes, #72(equity route) the most used bus route 40k+ weekly riders, and the #75 Third most ridership 26k weekly)
- Help Relieve PPS facilities deficits.
- Indoor facilities for year- round activities
- Attraction for state & nationwide sporting events with significant economic impact
- Job creator/Career Paths/Internship opportunities for our kids
- Add/Expand PPS sports offerings (indoor track, Lacrosse)
- Facility that can serve youth sports teams for years to come
- Harness the energy of sports for our city, which could lead to a decline in gun violence

# Sports Complex Components

- 12 INDOOR BASKETBALL COURTS
- 12 INDOOR VOLLEYBALL COURTS
- THREE INDOOR SOCCER FIELDS/  
• 2 INDOOR BASEBALL PRACTICE FIELDS
- 300 METER INDOOR RUNNING TRACK
- WEIGHT TRAINING SPACES
- LONG JUMP/ HIGH JUMP/  
DISCUS SHOT PUT/ POLE VAULT
- FOOTBALL / SOCCER STADIUM
- 1 NON STADIUM SOCCER FIELD
- 2 BASEBALL/ 2 SOFTBALL FIELDS
- 1 MILE CROSS-COUNTRY PATH
- 400 METER OUTDOOR RUNNING TRACK
- 4 Tennis Courts
- \* High School / College Lap Pool



lockwoodcarhart

ALBINA SPORTS COMPLEX

SITE PLAN

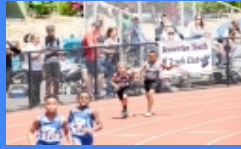
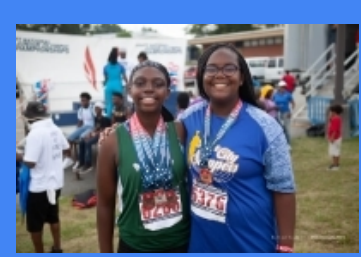
# Financial Considerations

- Overall Cost: Pre-Covid - \$175 Million. Today: Increased construction costs with COVID impacts. Final cost: TBD
- Financing: Public / Private Partnership - (PPR, Albina, Community, Sport Oregon)
- Business Structure: Income Based
- Revenue Structure: Rental/Events/Sponsorships



# A World Class Facility - our community, our kids deserve nothing less





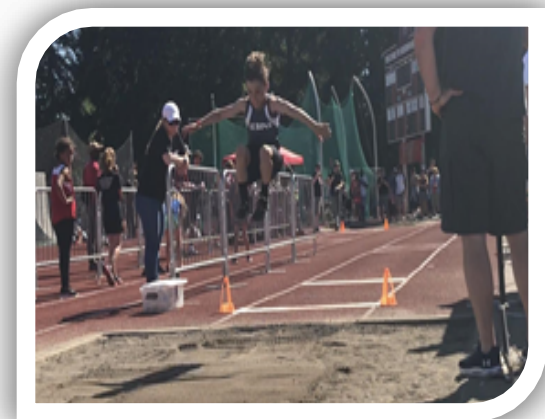
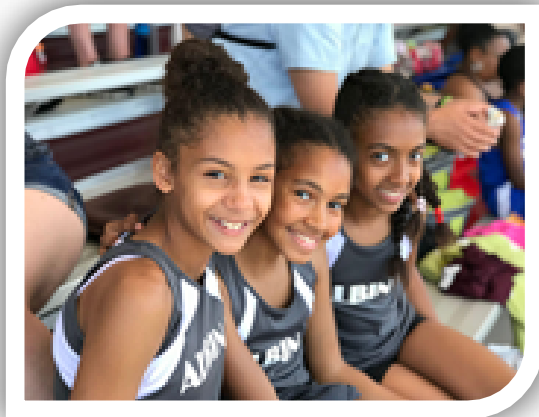
# REQUESTED ACTION

Grant the Albina Sports Program a lease option on this property allowing for further progress and next steps to make this vision a reality for our kids!





Thank You



# **Clarification Page**

# Working Team of Community, Business Leaders and Organizations and Supporters.

## ORGANIZATIONS

- Albina Vision Trust (AVT)
- Coalition of Black Men
- National Association of Minority Contractors
- NAACP - Portland Chapter
- Concordia Neighborhood Association
- Cully Neighborhood Association
- Jeff Miller – Travel Portland – CEO
- Jim Etzel - Sports Oregon - CEO
- Nova Newcomer - Friends of Baseball - Founder & CEO

## BUSINESS & SPORTS LEADERS

Jason Boudrie –Synergy Sports - CEO  
Jeffrey P. Kapp -  
Todd Lofgren - PPR - Deputy Director  
Ndamukong Suh – NFL Player  
John - Anderson Construction - CEO  
Dominic Waters – Pro Basketball Player  
Larry Warren –Cochran Electric  
Michael Bergman - Portland Track - CEO  
Craig Rice – Sera Architects  
Leon Mckenzie - 40+ PPS Track Coach  
John Mays - 40+ PPS Track Coach  
John Carhart - Lockwook Carhart Architects

## ELECTED LEADERS

- Lorenzo Poe - Former PPS Board Member
- Shusheela Jayapal - Multnomah County Commissioner
- Dan Ryan - City of Portland Commissioner
- Carmen Rubio - City of Portland Commissioner
- Mingus Mapps - City of Portland Commissioner
- Lew Fredricks - State Senator
- Herman Greene - PPS Board Member
- Chip Shields - Former State Senator
- Julia Brim-Edwards - PPS Board Member

### **COMMUNITY SUPPORTERS**

High School Coaches  
Club Sports Coaches  
College Coaches and athletic Directors

**Thousands of our KIDS!!!**

# Working Team of Community, Business Leaders and Organizations, and Supporters.

## ORGANIZATIONS (Supporters)

- Albina Vision Trust (AVT)
- Coalition of Black Men
- National Association of Minority Contractors
- NAACP - Portland Chapter
- Concordia Neighborhood Association
- Cully Neighborhood Association
- Jeff Miller – Travel Portland – CEO
- Jim Etzel - Sports Oregon - CEO
- Nova Newcomer - Friends of Baseball - Founder & CEO

## BUSINESS & SPORTS LEADERS (Potential Working group)

Jason Boudrie –Synergy Sports - CEO  
Jeffrey P. Kapp -  
Todd Lofgren - PPR - Deputy Director  
Ndamukong Suh – NFL Player  
Anderson Construction - CEO  
Dominic Waters – Pro Basketball Player  
Larry Warren –Cochran Electric  
Michael Bergman - Portland Track - CEO  
Craig Rice – Sera Architects  
Leon Mckenzie - 40+ PPS Track Coach  
John Mays - 40+ PPS Track Coach  
John Carhart - Lockwook Carhart Architects

## ELECTED LEADERS (Supporters)

- Lorenzo Poe - Former PPS Board Member
- Shusheela Jayapal - Multnomah County Commissioner
- Dan Ryan - City of Portland Commissioner
- Carmen Rubio - City of Portland Commissioner
- Mingus Mapps - City of Portland Commissioner
- Lew Fredricks - State Senator
- Herman Greene - PPS Board Member
- Chip Shields - Former State Senator
- Julia Brim-Edwards - PPS Board Member

### **COMMUNITY SUPPORTERS**

High School Coaches  
Club Sports Coaches  
College Coaches and athletic Directors

**Thousands of our KIDS!!!**