



PORTLAND PUBLIC SCHOOLS OFFICE OF SCHOOL MODERNIZATION

501 North Dixon Street / Portland, OR 97227
Telephone: (503) 916-2222

Date: October 20, 2020
To: School Board
From: Dan Jung, Chief Operating Officer
Dana White, Director of Planning & Real Estate Management
Subject: District Topology Control Lines - Minor Corrections and Revisions

BACKGROUND

District topology control lines reflect the physical features of the District's intended boundaries that determine school attendance. These topology control lines generate the data that informs the District's decisions regarding enrollment, transportation routing, demographic and equity analyses.

Similar to the Census Bureau's methodology, the District's topology control lines usually include street and waterway centerlines, and tax parcels. In rare cases, no external control feature, such as a street, is available and an arbitrary feature (usually the existing PPS enrollment line) description is recorded.

The District's topology controls have changed over time due to construction, initial arbitrary features, and outdated tax lots resulting in a loss of integrity of the control lines and the data it supports. The most common manifestations of this are overlapping of control lines, or gaps between the control lines. While not noticeable to the casual user, this loss of integrity can create problems with data analysis and modeling, especially when comparison to other data sets, such as census tracts, is required.

In preparation for the District's Enrollment & Balancing Project being led by consultant FLO Analytics, staff has reviewed all topology control lines and is recommending minor corrections in seven areas. These recommended minor corrections impact only control lines within public right-of-ways or tax lots associated with commercial/industrial land. No residential tax lots are impacted by any of the revisions. Examples demonstrating some of the minor corrections staff recommends can be found in Attachment A.

RELATED POLICIES/BEST PRACTICES

Board Policy 4.10.045-P Student Assignment to Neighborhood Schools

The purpose of the Student Assignment to Neighborhood Schools Policy is to 1) Establish a process for assigning students to neighborhood schools, and 2) Provide consistent guidelines for changes to school boundaries

Best Practice

It is best practice to periodically update and correct features that contribute to data collection in order to insure the accuracy of the findings of analyses and modeling.

ANALYSIS OF SITUATION

Denying District topology minor corrections and revisions would denigrate the quality of data used for the analysis and modeling that informs the District's enrollment and equity decisions.

FISCAL IMPACT

There are no fiscal impacts to approving the District topology minor corrections and revisions.

COMMUNITY ENGAGEMENT (IF APPLICABLE)

NA

TIMELINE FOR IMPLEMENTATION / EVALUATION

District topology minor corrections and revisions are needed immediately in order to provide quality data that will inform the District's Enrollment & Balancing Project that is currently under way.

BOARD OPTIONS WITH ANALYSIS

1. Approve the district topology minor corrections and revisions as required to provide accurate data for the Enrollment & Balancing Project to provide the District high quality analysis and modeling.
2. Deny the district topology minor corrections and revisions and compromise the data provided for the Enrollment & Balancing Project and, ultimately, the quality of the analysis and modeling.

CONNECTION TO BOARD GOALS

NA

STAFF RECOMMENDATION

Staff recommends approving the District topology minor corrections and revisions.

As a member of the PPS Executive Leadership Team, I have reviewed this staff report.

____CH____ (Initials)

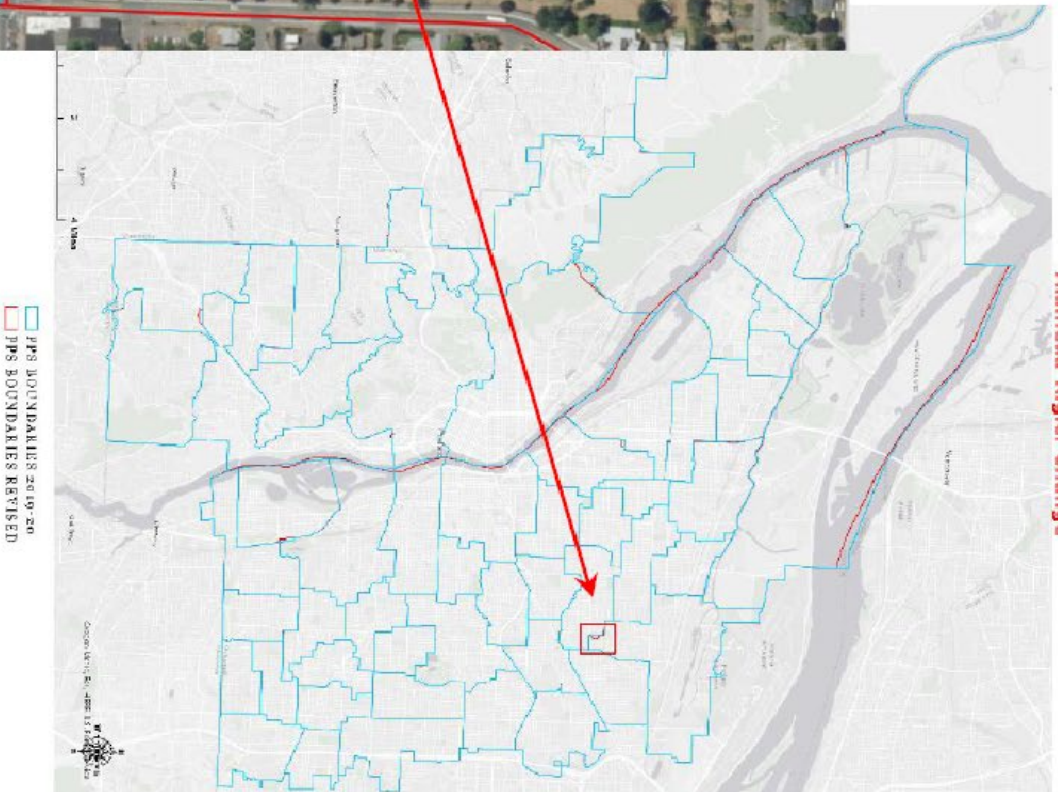
ATTACHMENTS

- A. Examples of proposed District topology minor corrections and revisions.

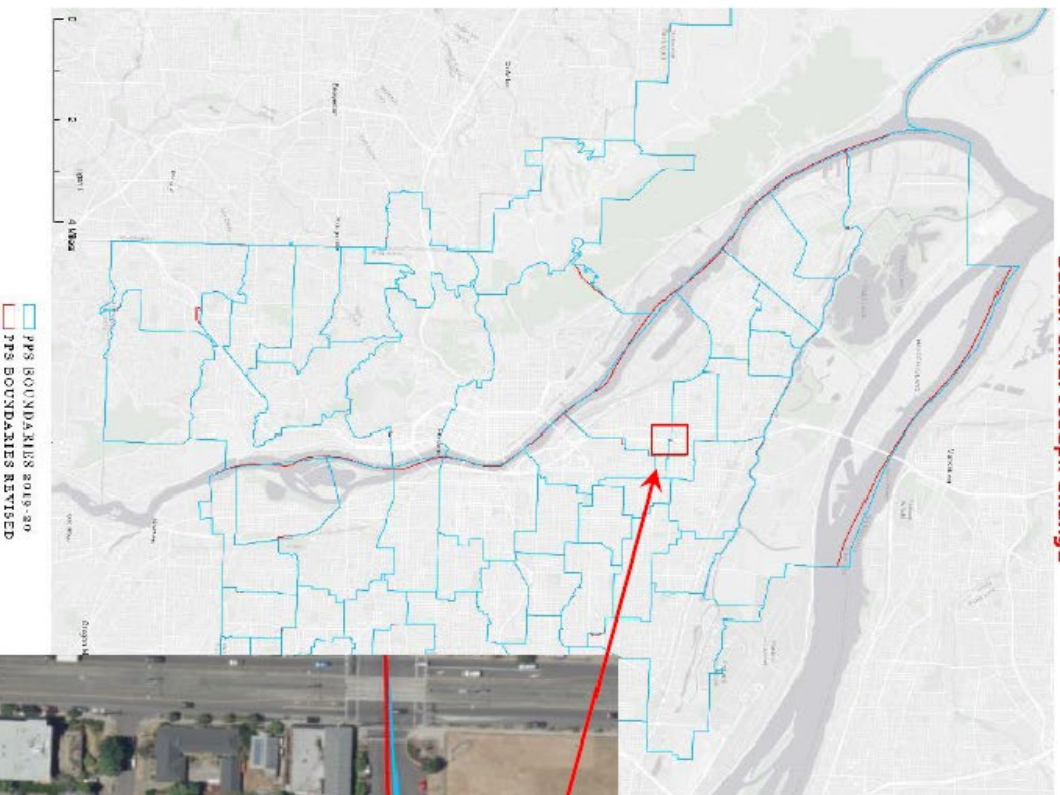
Attachment A

Examples of Proposed District Topology Minor Corrections and Revisions

Here the original line (blue) follows an underlying "arbitrary" feature, possibly an old tax parcel but there is no existing feature to represent it. The new adjustment follows a street centerline.



Beach-Chief Joseph Change

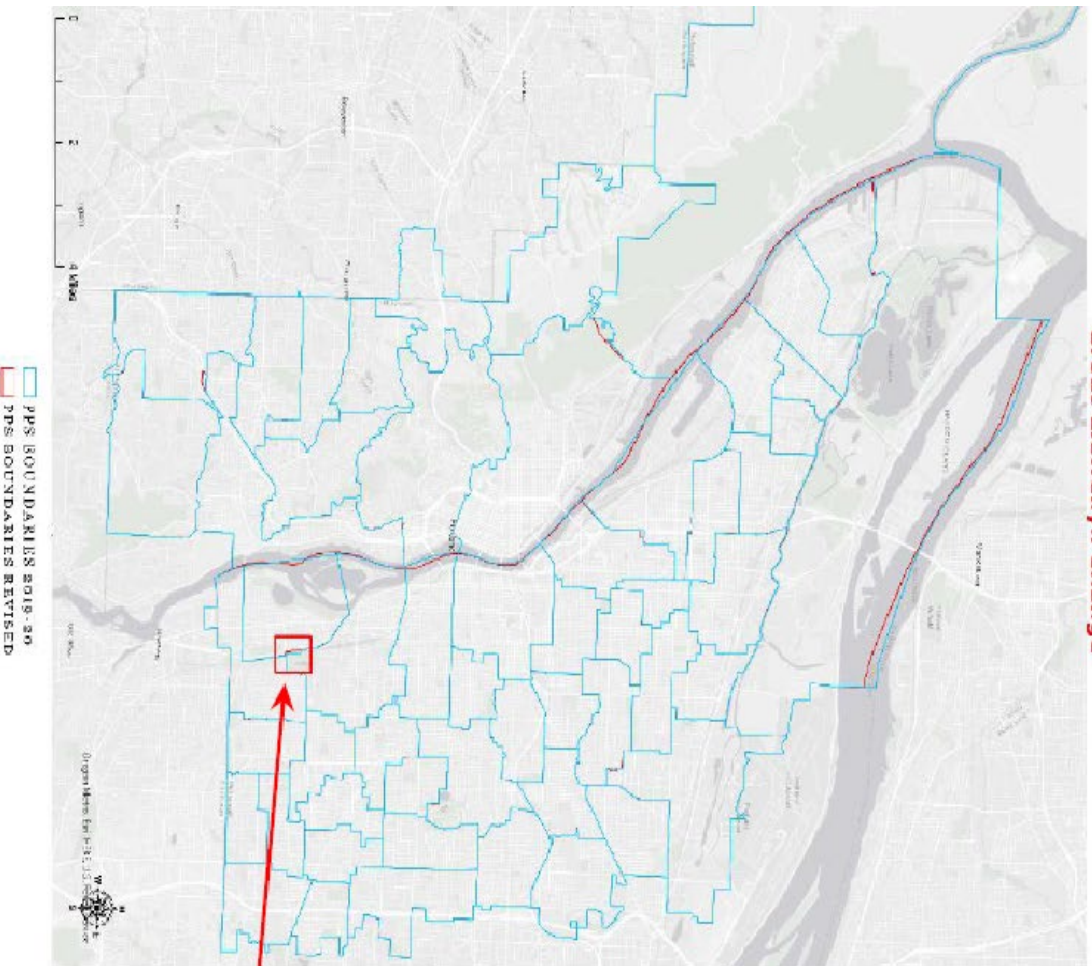


Here the original line (blue) follows what was probably the original street line prior to the Interstate construction. The new adjustment follows the closest street centerline.





Grout-Llewellyn Change

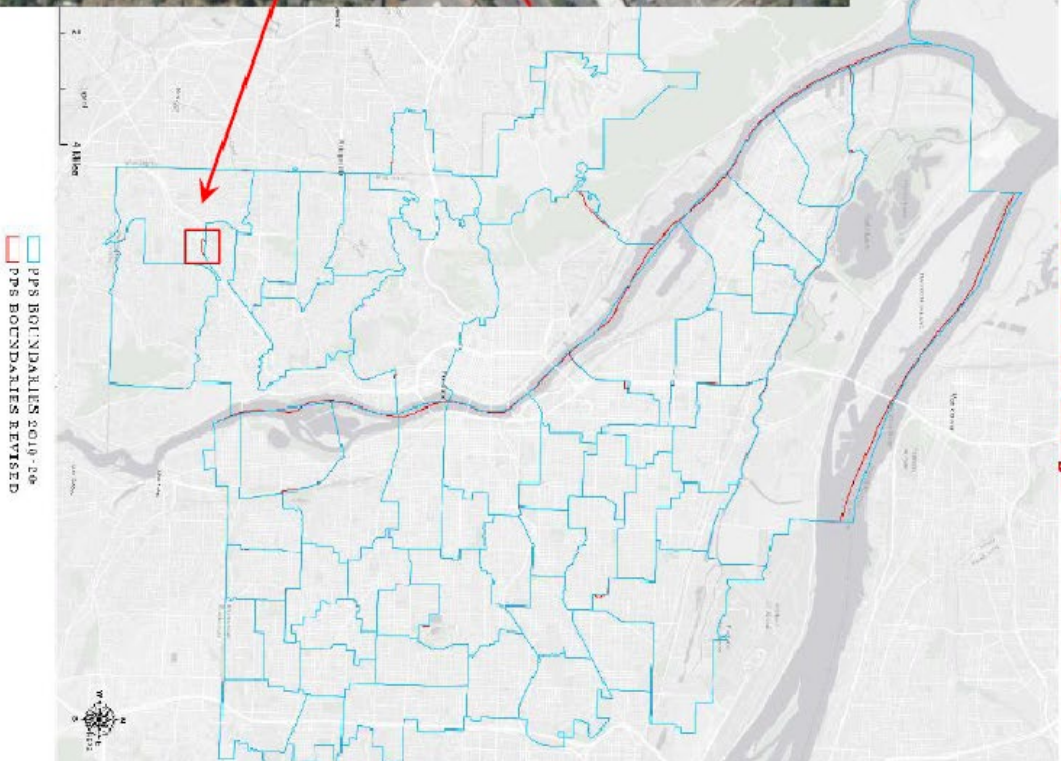


Here the original line (blue) follows a railroad line and may be part of census line used for more recent adjustments. The new adjustment follows the closest street centerline and aligns with the flow of the whole boundary.



Rieke-Markham Change

Here the original line (blue) follows what was probably the original street line prior to the Interstate construction. The new adjustment follows the closest street centerline and continues along the Interstate. The buildings impacted by this change are commercial and have no permanent residents.



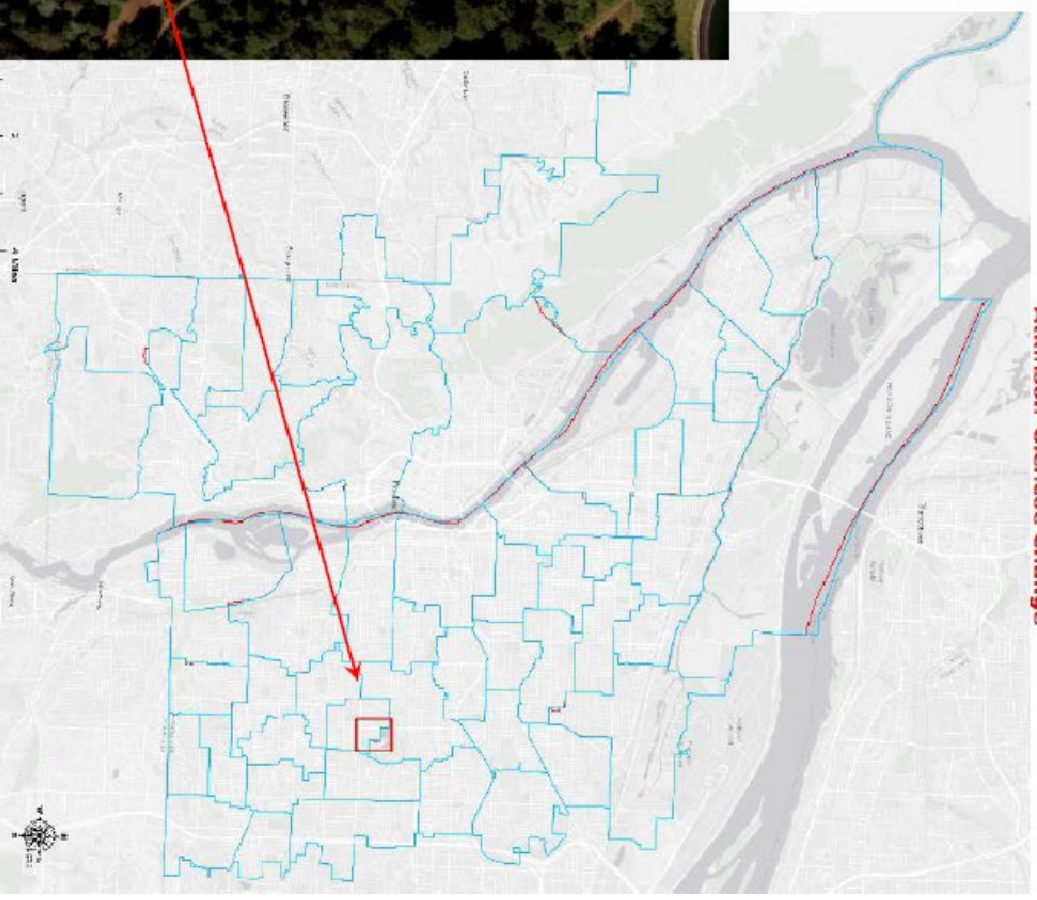
Here the original line (blue) crosses from a street centerline to a taxlot line. The new adjustment follows the street centerline through Mt Tabor Park.



PORTLAND PUBLIC SCHOOLS

Boundary Topology Corrections and Revisions

Atkinson-Glencoe Change



PPS BOUNDARIES 2010-20
PPS BOUNDARIES REVISED