

PPS Early Literacy Success Grant Application



PORTLAND
Public Schools

January 23, 2024

Presentation Overview

Agenda:

- Overview of ODE's Early Literacy Success District Grant
- PPS Early Literacy Plan (current state & next steps)
 - Research-Aligned Curriculum
 - Professional Development & Coaching
 - Extended Learning Programs
 - High-Dosage Tutoring
 - Hiring
- Budget Review

Presenters:

- Kristina Howard, Interim Chief Academic Officer
- Dr. Emily Glasgow, Senior Director PreK-5 Core Academics
- Melissa Schachner, Director K-5 English Language Arts & Social Studies
- Darcy Soto, Director Learning Acceleration

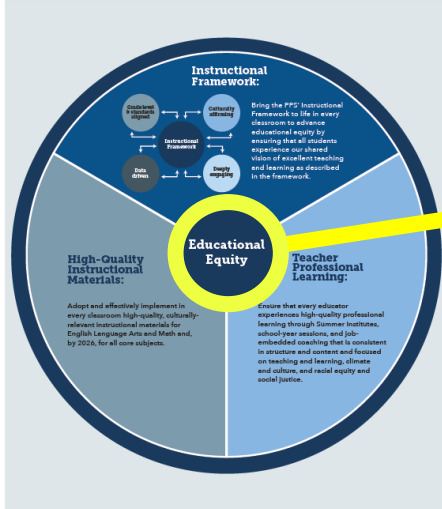
Our Why: Educational Equity



Our Roadmap Toward Educational Equity for All PK-12 Students

PPS is committed to providing all students with high-quality teaching and learning in every classroom, every day - instruction that helps them achieve our Graduate Portrait and closes persistent gaps in outcomes based on race.

In partnership with teachers, school leaders, and staff from across the district, we're taking several important steps to make this vision a reality for all students: calibrating around a new instructional framework that articulates a shared vision of highly effective teaching and learning, adopting new curricula to support that instruction, and offering improved professional learning experiences for teachers aligned to both.



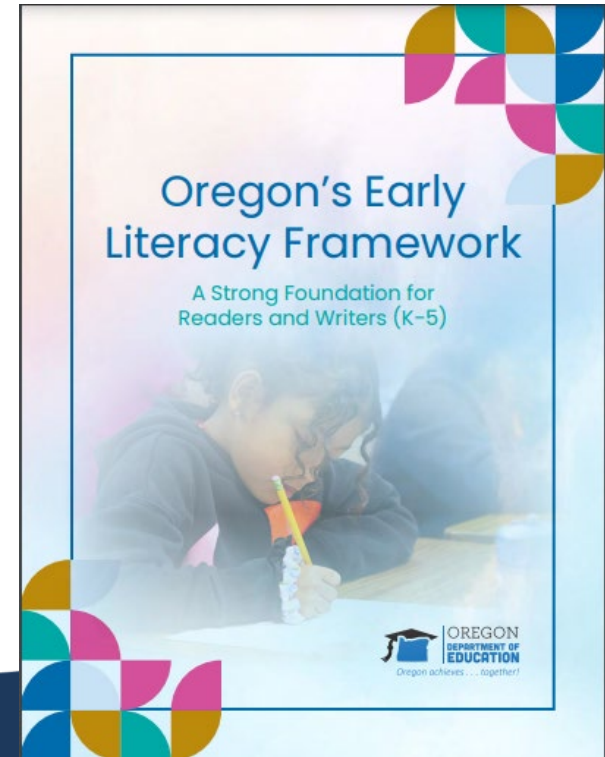
Our Why:
Educational
Equity

Raising the achievement of all students while (1) eliminating the gaps between the lowest and highest performing students and (2) eliminating the racial predictability and disproportionality of which student groups occupy the highest and lowest achievement categories.

OR Early Literacy Success Initiative (HB 3198)

In 2023, the OR Legislature established early literacy as a top priority. In creating the **Early Literacy Success Initiative**, they identified four goals:

1. Increase early literacy for children from **birth to third grade** ;
2. Reduce literacy **academic disparities** for student groups that have historically experienced academic disparities;
3. Increase **support to parents and guardians** to enable them to be partners in the development of their children's literacy skills and knowledge; and
4. Increase access to early literacy learning through support that is **research -aligned, culturally responsive, student -centered and family -centered** .



Early Literacy Success School District Grant

Overall ODE Information:

[\(application guidance\)](#)

What: Non-competitive, application-based, annual grant-in-aid for school districts

Why: To support comprehensive early literacy plans that are research-based and culturally responsive

When: Application due Jan. 8, 2024 (Board review/approval submitted by Feb. 28, 2024)

How much: \$90 mil for 2023-25 biennium

PPS Information:

What: Use of funds to supplement and extend existing investments in early literacy

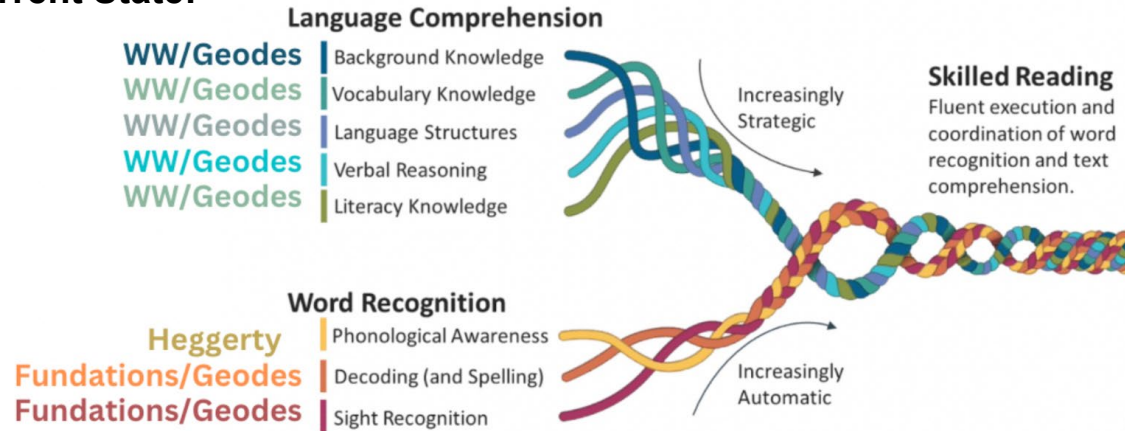
When: Application submitted on Jan. 5, 2024 (Board review on Jan. 23, 2024/Vote on Feb. 5, 2024)

How much: \$6,697,684 for 2023-25 biennium (split evenly across two years with option to roll funds)

Research -Aligned Curriculum

Allowable Expense Category #1

Current State:



Scarborough, H. 2001. Connecting early language and literacy to later reading (dis)abilities: Evidence, theory, and practice. Pp. 97-110 in S. B. Neuman & D. K. Dickinson (Eds.) *Handbook of Early Literacy*. NY: Guilford Press.

Grant Extension:

Heggerty phonological awareness curriculum in PreK

Professional Development & Coaching

Allowable Expense Category #2

Current State:

- K-5 teachers trained in core curriculum materials;
- Ongoing professional learning cycles to internalize and implement the curriculum;
- School-based coaches to support planning and implementation;
- 143 PPS educators fully LETRS trained ([LETRS study](#))

Grant Extension:

- PreK PD on phonological awareness/Heggerty;
- Year-long intensive Science of Reading PD and bridge to practice coaching for approx. 20 schools/year;
- Funds to support Wit & Wisdom module unpacking at school sites

Extended Learning Programs

Allowable Expense Category #3

Current State:

- Early Kindergarten Transition at 18 Title I sites;
- 2023 Summer Acceleration Academy served 2,278 students at 17 sites--majority of students were rising first and second graders (funded by ESSER and SIA)

Grant Extension:

- Maintain funding of Early Kindergarten Transition (with enhanced literacy focus);
- Maintain funding of Summer Acceleration Academy for identified 1st-3rd grade students at 9 sites

High-Dosage Tutoring

Allowable Expense Category #4

Current State:

- Launched High Dosage Tutoring in 2021-22 (ESSER funded);
- Expanded tutoring model 2022-23 yielding promising results (ESSER funded);
- Paused implementation in Nov 2023 due to teachers' strike and budget uncertainty

Grant Extension:

- Develop resources and supports to implement High Dosage Tutoring embedded in the school day (through WIN Block) as well as after school
- Fund High Dosage Tutoring supports for after school tutoring for 2nd and 3rd grade students

Hiring

Allowable Expense Category #5

Current State:

- School-based instructional coaches at each K-5 school (generalists);
- 38 school-based interventionists;
- 1 Director of K-5 English Language Arts & Social Studies

Grant Extension:

- 6 school-based Early Literacy Coaches to provide 1:1 bridge to practice coaching in Science of Reading K-3 classrooms;
- 7 additional school-based interventionists;
- 1 Early Literacy Specialist to support cadre of Early Literacy Coaches

Grant Budget (2023 -25)-- [link here](#)

Investment	FY24-FY25 (Total: \$6,697,684)
PreK Phonological Awareness Curriculum & PD	\$126,320
Year-Long Science of Reading PD (~20 schools)	\$2,008,000
Wit & Wisdom Unpacking/Internalization sessions	\$195,364
Early Literacy Coaches (~6, school-based)	\$750,000
Early Literacy Specialist (1, central)	\$150,000
Early Literacy Interventionists (7, school-based)	\$840,000
Early Kindergarten Transition (18 sites/summer)	\$650,000
Summer Acceleration Academy (450 students/summer)	\$650,000
High-Dosage Tutoring	\$1,000,000
Indirect Costs	\$328,000