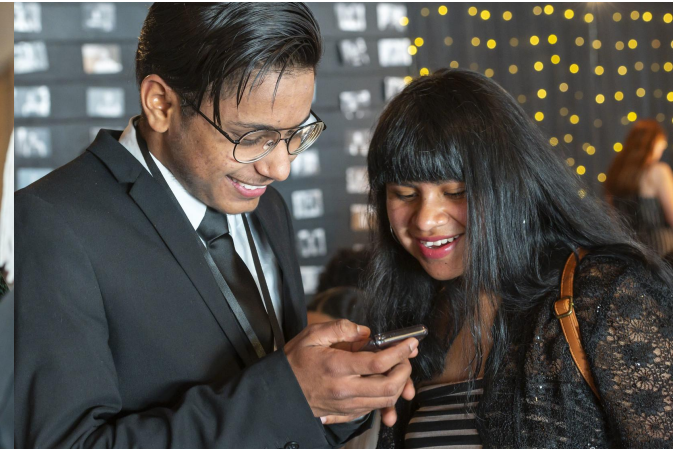




Community Engagement and Student Voice

September 2020



Introduction

In 2018, the PPS Board of Education and Superintendent launched a citywide conversation to tap into the wisdom of our students, our educators, and our community, to reimagine PPS for a rapidly changing world. **It was a powerful experience to unleash our collective imagination.**

This new vision--[PPS reImagined](#)--is inspiring and courageous. And while school district leaders, administrators, teachers and support staff are critical drivers of realizing our community's vision, **we cannot do it alone.**

For every student to realize the elements of the Graduate Portrait, we, as **one community**, must embrace our **collective responsibility**. That means aligning our efforts to clearly define and openly share our goals throughout our "village," engaging meaningfully with students, families, community leaders, youth advocates and mentors, and create partnerships with business and philanthropic leaders.



Tonight's Objectives

Tonight, we expect to:

1. Provide an introduction to the driving values, goals, and framework of PPS' community engagement and student voice infrastructure.
2. Draft shared goals and expectations for community engagement and student voice between PPS staff and board.
3. Formulate shared purpose statement for a reimagined Community Advisory Council structure.



PPS reimagined

Preparing Our Students to Lead Change and Improve the World

A graduate of Portland Public Schools will be a compassionate critical thinker, able to collaborate and solve problems, and be prepared to lead a more socially just world.



Core Values

- Students at the Center
- Racial Equity and Social Justice
- Honesty and Integrity
- Excellence
- Respect
- Relationships
- Creativity and Innovation
- Partnerships and Collaboration
- Grounded in the Portland Spirit
- Joyful Learning and Leadership



System Shifts

- A Connected and Transformative School District
- Racial Equity Aligned Systems and Structures
- Schools as Community Hubs
- Supports for Global Stewards and Ambassadors
- A Culture of Physical and Emotional Safety



RESJ Goals

Community Engagement

Develop coherent frameworks that embolden more community participation in relevant and substantive ways, informing district policy and administrative decisions.

Elevate the importance of interdependence among PPS and the broader community, ensuring decisions embody our community's voice.

Create opportunities that build our families' capacity to be informed and actively engaged in their children's education and in school improvement efforts, especially students and families of color.

Student Leadership

Increase the activity participation of students of color in leadership opportunities (i.e. student government, clubs/affinity spaces, site council) across each PPS middle and high school campus.

Establish district-wide alignment and equitable representation in support of affinity groups based on race and ethnic representation (i.e. MEChA, Black Student Unions, Native American Student Unions, etc.)

Facilitate intentional and intersectional group gatherings (i.e. student summits/conferences) that increase leadership and professional skills of all students, and in particular students of color.

Student Voice

Center student voice in the districts decision making processes so that they:

1. have ample opportunity to discuss how they experience school,
2. engage in facilitated discussions where they can express various viewpoints even if they are counter to dominant narratives,
3. have a system for providing feedback to district leadership regarding school issues, suggestions and desires and
4. have multiple means of expressing their perspectives regarding district or school issues.

Increase opportunities for students to identify and work on equity issues impacting their educational experiences with District leadership.

Actively involve students in district improvement efforts and meetings, developing the capacities to address the issues they identify alongside district leadership.

Community Engagement & Student Voice

The **Department of Community Engagement and Student Voice** serves as a central conduit for PPS decision makers to listen to, learn from and involve key stakeholders in PPS' decisions and policy shifts, in service of accelerating the conditions for student achievement.



Core Functions:

1. Building the District's capacity to engage authentically with our diverse community
2. Center Community Voice and Experience in District Decision Making and Policy Change
3. Elevate systems shifts with the leadership and expertise of PPS students





Department Values

Racial Equity & Social Justice

We believe diverse communities have cognition and insight that help the district's engagement, and goal of eliminating the achievement and opportunity gap.



Deep Democracy

We believe in addressing and challenging power dynamics that prevent Black, Native and Communities of Color from fully participating in our decision-making processes. This includes increasing accessibility for language access and for people experiencing disabilities.

Youth Empowerment

We believe that student voice is an essential and meaningful ingredient in our decision-making and seek to amplify their lived experience in our district improvement efforts.



Team



Jonathan Garcia
Chief Engagement Officer



Shanice Brittany Clarke
Director, Community Engagement



Community Engagement Specialists



Maria Hernandez



Yian Saechao
(Student Engagement)



Ezell Watson

Community Agents



Mirna Ghamrawi



**Nelson
Perez-Gonzalez**

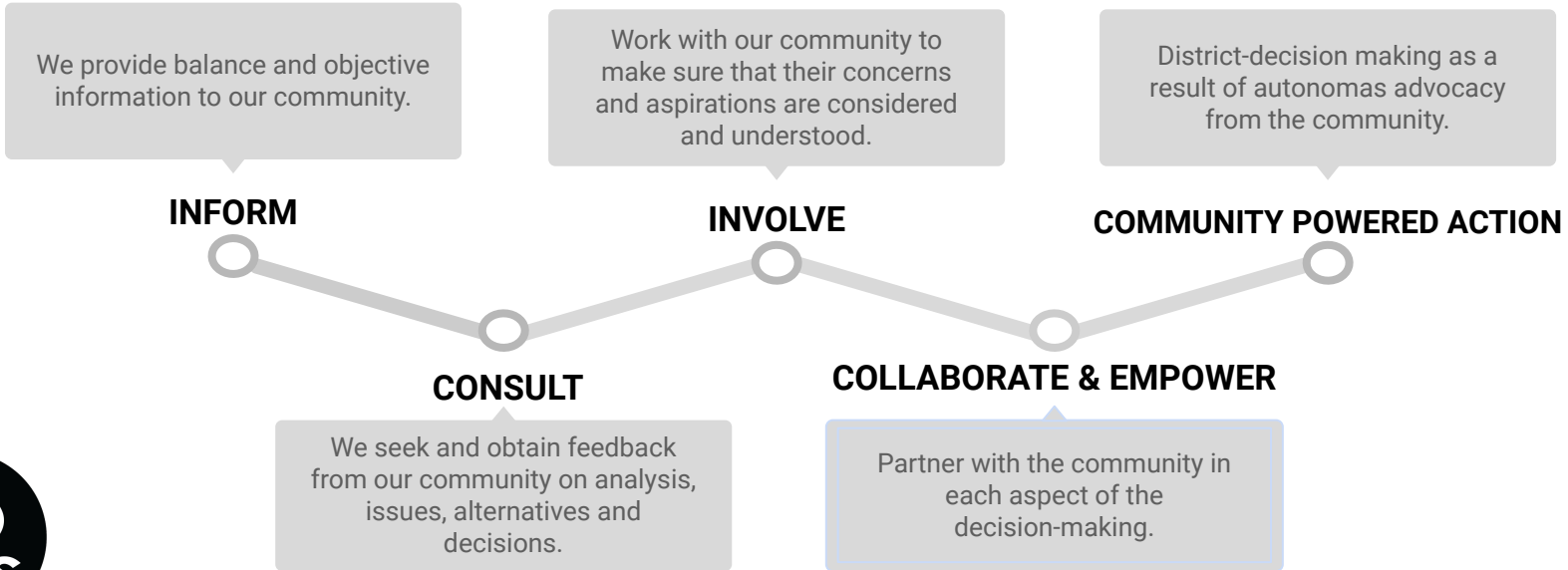


Olga Filinova



Trang Tran
(Early Fall)

Spectrum of Community Engagement



TENTATIVE Framework for Capacity Building and Engagement



Connections



Confidence



Cognition



Capabilities

Create engagement opportunities in relationship with students, and that honors the histories and strengths of Black, Indigenous, and communities of color.

Create accessible, welcoming, and universal design for spaces that distribute power, and empower people of varying languages, abilities, and backgrounds.

Honor community intelligence, and improve engagement strategies with the RESJ Lens.

Facilitate meaningful opportunities for deep democracy, and address educational system shifts in engagement activities.

Discussion #1



Our Shared & Collective Success

10 Minutes





Community Advisories

01	Community Advisory Councils	<ul style="list-style-type: none">• School Board and/or Superintendent sponsored advisory groups• Only Student/Parent/Community Member Participation.
02	Joint Committees or Task Forces	<ul style="list-style-type: none">• Set to accomplish a short-term task, PPS can establish work groups that can include community members as active participants.
03	School-Based Leadership Groups	<ul style="list-style-type: none">• School Site Councils• Student-Leadership Groups



Community Advisory Councils



A Community Advisory Council (CAC) is a District-established collective of diverse PPS community members, especially students and parents/guardians, that provide direct advisement to the PPS Board of Education, serving as community ambassadors and conduits for the shared voices of our community.

Proposal:

- Shared Agreement - Staff and School Board to collectively establish CACs (with advisement from community members), including developing an operations manual detailing each organization's purpose, shared agreements and overall structure.
- PPS School Board appoints membership to CACs from their respective zones (7 member CACs). Superintendent appoints staff liaison to the CACs.





Community Advisory Councils

10 Minutes





NORTH PORTLAND
LOVES
OUR GRADS
WE ARE ROOSEVELT!

GO RIDERS!
ROOSEVELT
GRAD
2020