



**FORWARD**  
**TOGETHER**

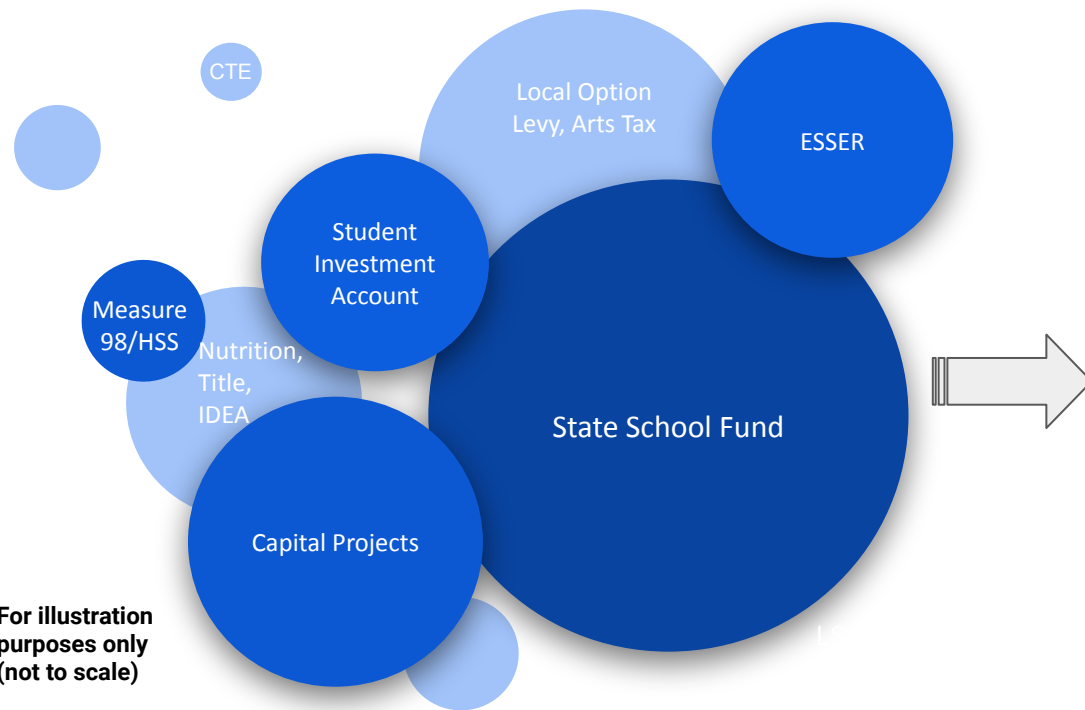
---

**Superintendent's 2023-24 Proposed Budget**

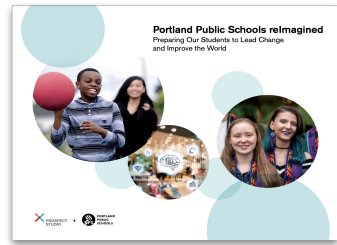
**Remaining Focused on Student Success**

**April 2023**

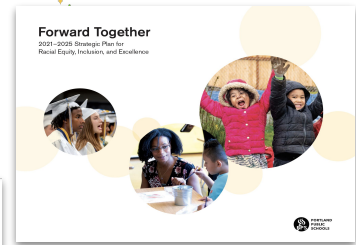
# Aligning our dollars to our vision for PPS



Destination



Roadmap



Compass



# 2022-2023 Shared Successes

“**Defied** the distressing statewide and nationwide trends.”<sup>1</sup>

“Graduation rate **increased** to 85.7% in 2022.”<sup>2</sup>

“Demonstrating **progress** in advancing reading achievement...”<sup>4</sup>

“Rolled out...the “**most robust**” summer programming package in state history.”<sup>5</sup>

“One of the **strongest** climate policies in the nation.”<sup>6</sup>



<sup>1</sup> [Oregon students' reading, writing and math skills plummeted amid pandemic, first scores since 2019 show](#)

<sup>2</sup> [At 81.3%, Oregon graduation rate up slightly after last year's decline](#)

<sup>3</sup> [Portland School Celebrated as Winner of the Richard M. Robinson Literacy Champion Award](#)

<sup>4</sup> [Portland Public Schools to kick off \\$15 million summer programming](#)

<sup>5</sup> [Portland School District Passes One of the Strongest Climate Policies in the Nation](#)

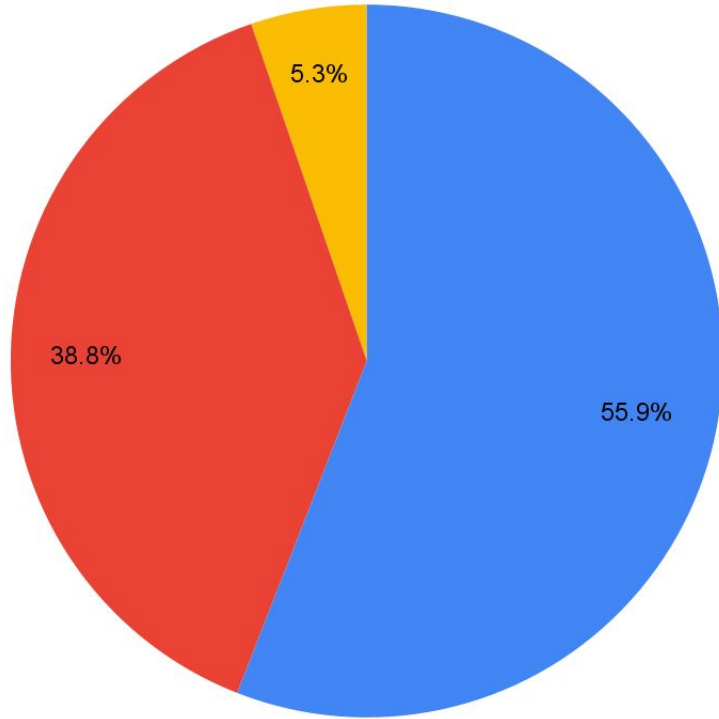
# 2023-2024 Proposed Budget

# 2023-24 Proposed Budget: 2.17 Billion

Comparison: FY 2022-23 Adopted Budget and 2023-24 Proposed Budget  
(In Millions)



# 2023-24 Proposed Budget: General and Special Revenue FTE



- Instruction
- Student Support
- Administrative Support

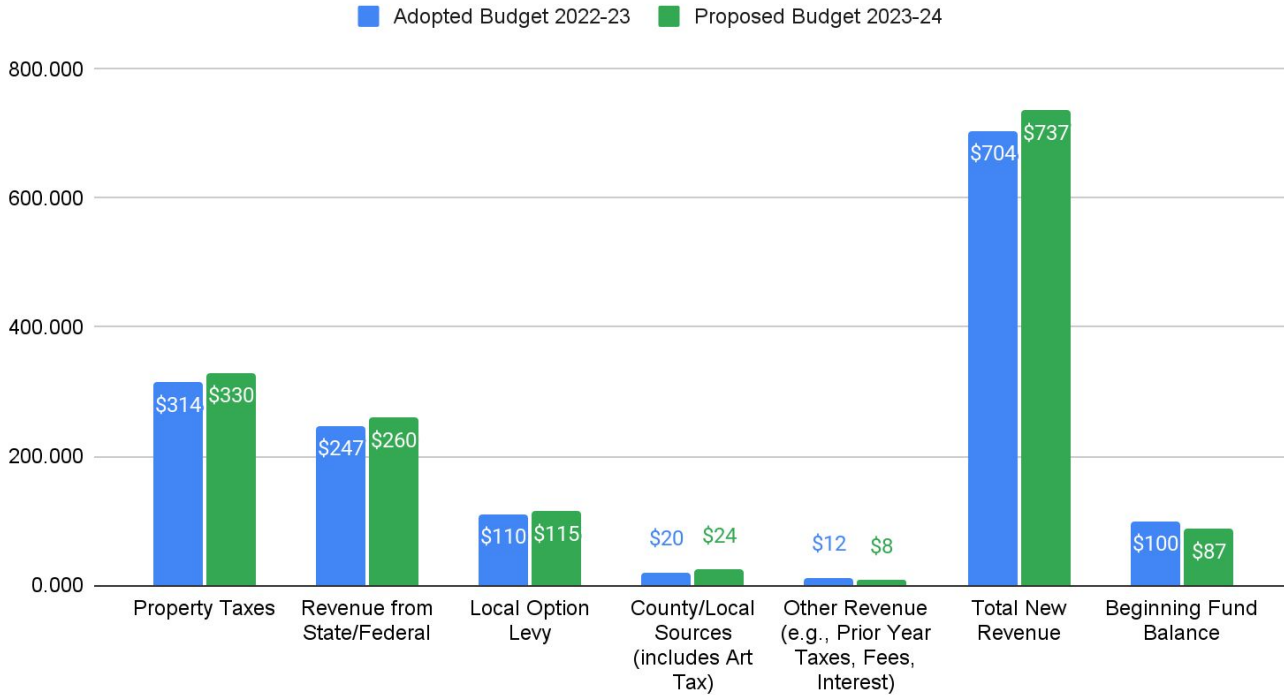
94.7% of FTE support students directly in schools.

PPS has the lowest teacher to student ratio in Oregon.\*

\* Source: Oregon Department of Education, FY 2022. See Slide 24.

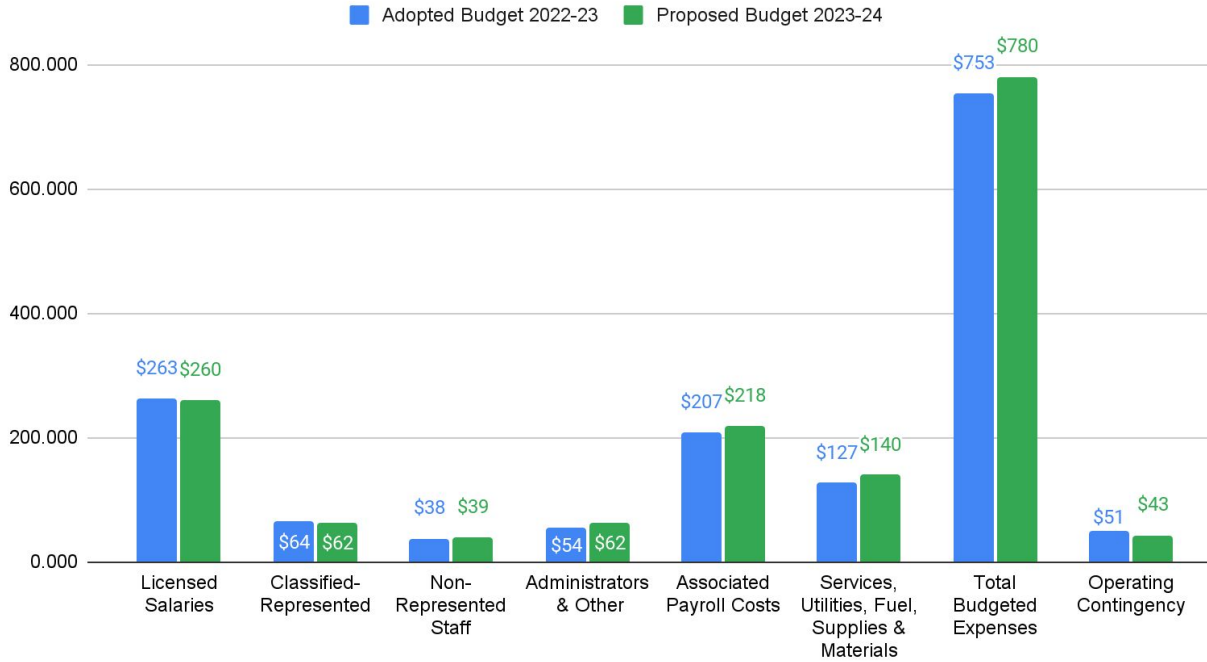
# 2023-24 Proposed Budget: General Fund Revenue

Comparison of General Fund Resources (In Millions)



# 2023-24 Proposed Budget: General Fund Expenditures

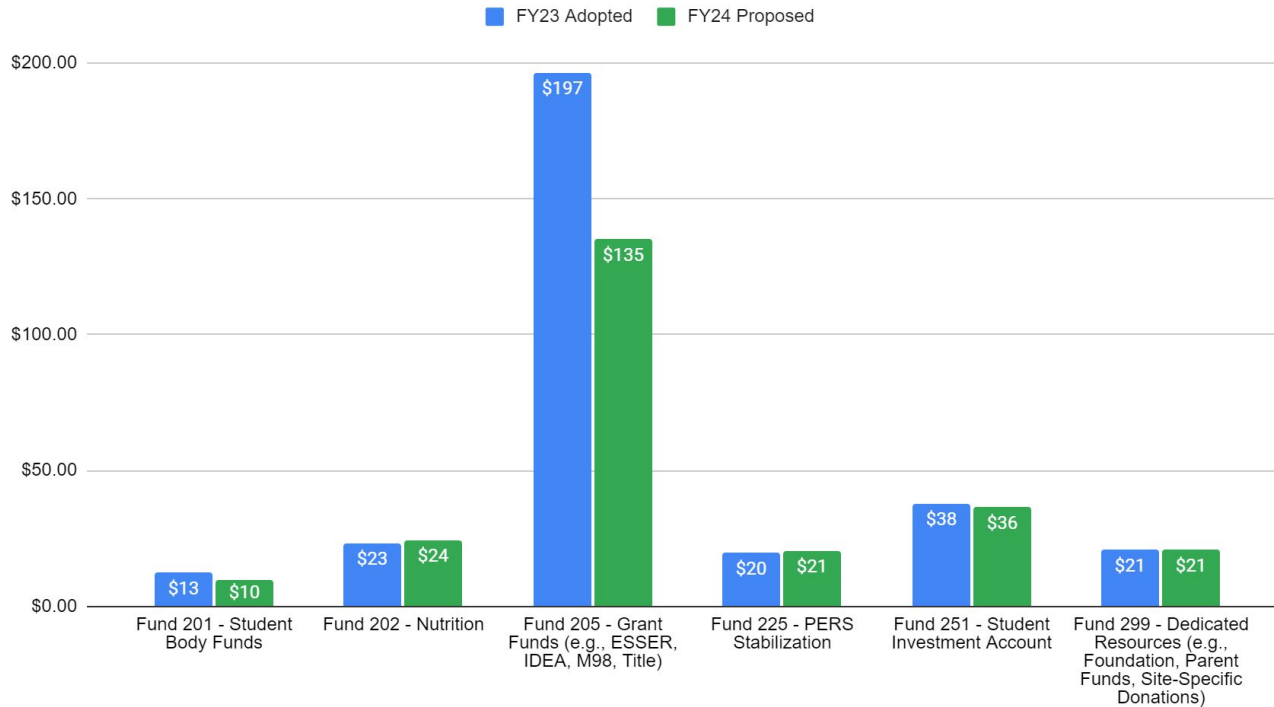
Comparison of General Fund Projected Expenditures (In Millions)





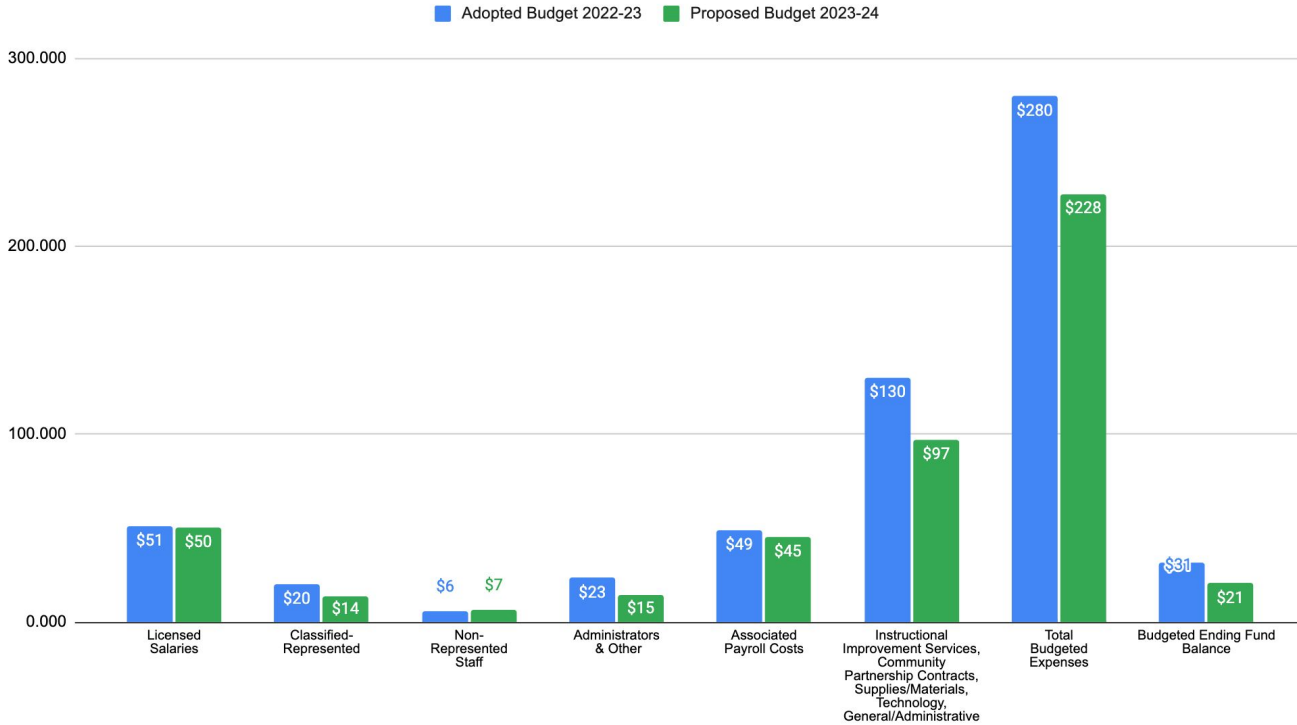
# 2023-24 Proposed Budget: Special Revenue Fund

Comparison of Special Revenue by Minor Fund (In Millions)



# 2023-24 Proposed Budget: Special Revenue Fund Expenditures

Comparison of Special Revenue Fund Projected Expenditures (In Millions)



# Deep Dive: Special Revenue Fund

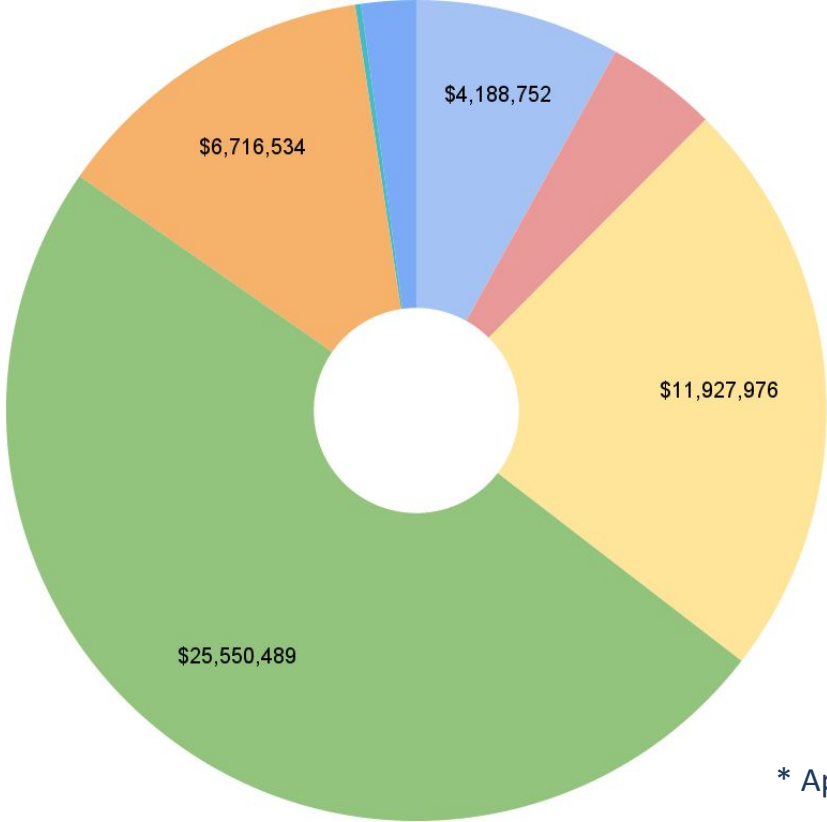
# Deeper Dive: Integrated Grant Revenue

Program	Budgeted	PPS Preliminary Allocations	
	2022-2023	2023-24	2024-25
High School Success (HSS)	\$12,744,282	\$13,397,923	\$13,944,777
Student Investment Account (SIA)	\$37,641,570	\$36,431,620	\$36,847,254
Continuous Improvement Planning (CIP)	\$912,079*	\$1,507,230	TBD
Career Technical Education - Perkins V (CTE)	\$511,848	\$435,071	\$435,071
Every Day Matters (EDM)**	\$0**	\$0**	\$0**
Early Indicators & Intervention Systems (EIIS)	\$130,764	\$130,764	\$130,764
<b>Total Preliminary Allocation</b>	<b>\$51,940,543</b>	<b>\$51,902,608</b>	<b>\$52M (Estimate)</b>

\*\*The CIP 2022-2023 budget amount is a carryover being spent down this current year.

\*\* EDM is unfunded and requirements are embedded in the five other programs.

# Deeper Dive: 2023-24 Integrated Grant Expenditures\*



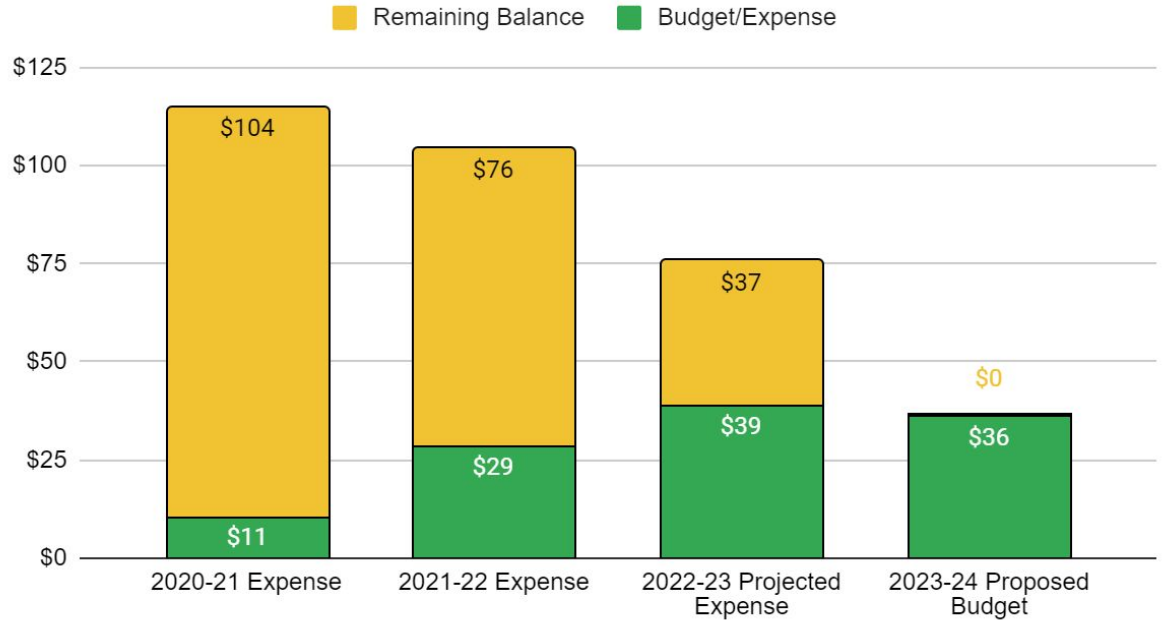
- Community Based Partnerships
- Curriculum Adoption, Professional Development
- HS Student Success and Career Technical Education
- Mental, Behavioral, Student Supports
- Improve Class Size K-8
- Data-Driven Continuous Improvement
- Administrative Indirect

\* Approved by the PPS School Board on April 21.

# Deeper Dive: One-Time ESSER Revenue & Expenditures

Revenue	PPS Allocation
ESSER I	\$8 million
ESSER II	\$33 million
ESSER III	\$74 million
<b>Total</b>	<b>\$115 million</b>

ESSER Award, Budget/Expense and Remaining Balance



# Deeper Dive: One-Time ESSER Dollars - 2023-24 Proposed Budget

Proposed Activity/Expenditures	FTE	Total (In Millions)
Reading and Math Learning Acceleration Specialists	20.00	\$2.2
ESSER School Based Improvement Grants	57.24	\$8.8
High School Student Success - Evening Scholars & Credit Recovery	3.75	\$0.6
2023 Summer Learning, Safety and Enrichment	1.00	\$6.9
Teaching and Learning: Curriculum Adoption Professional Development		\$7.6
Health and Safety (Airflow and Circulation)		\$1.5
Climate Crisis Response and Climate Justice		\$0.5
Innovation Studio		\$0.2
Administrative Indirect		\$1.5
FEMA (HOLD)		\$6.7
<b>Total</b>	<b>82.99</b>	<b>\$36.4</b>

# Remaining Focused on Student Success



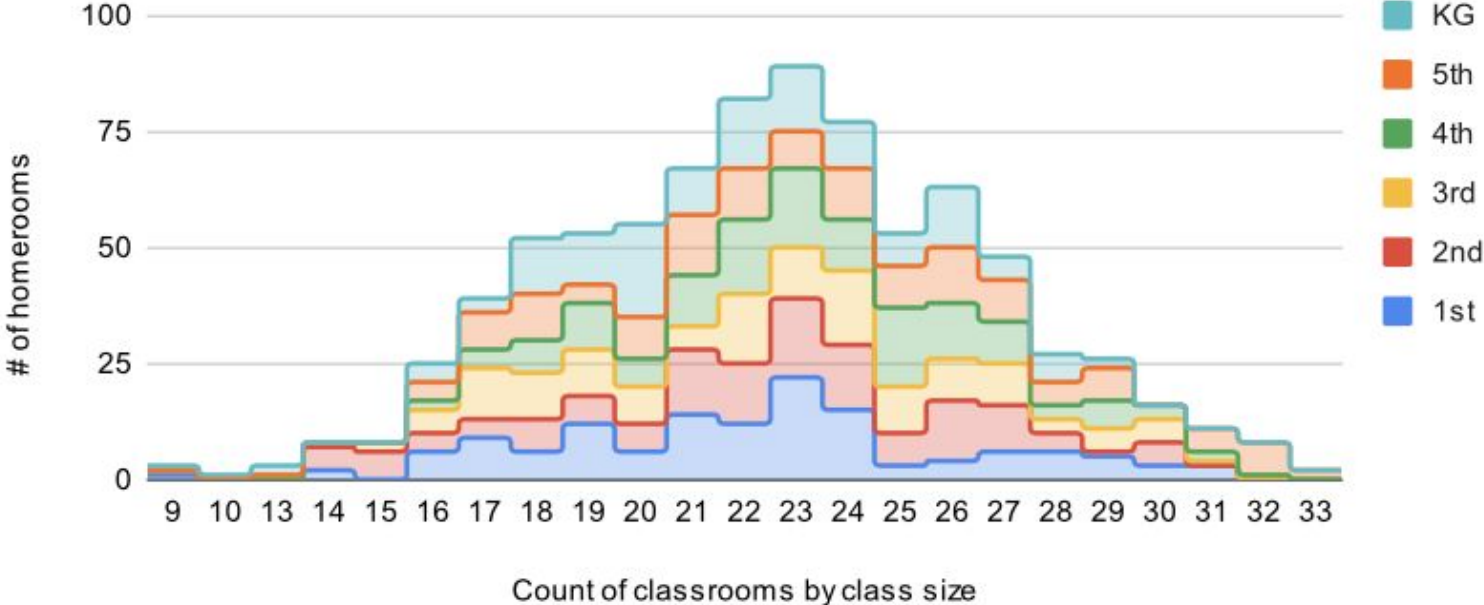
# Remaining Focused on Student Success

Meet Student Growing Needs	Mental, Behavioral Health and Student Supports	Teaching and Learning Excellence	Educator Professional Learning and Support	Make Progress on Our Community's Priorities
<p>Reading and Math Learning Acceleration Specialists</p> <p>2023 Summer Learning, Safety and Enrichment</p> <p>HS College Coordinators</p> <p>Student attendance coaches</p> <p>Continue student success coordinators for student-athletes</p>	<p>Support the mental &amp; behavioral health of students; address substance abuse</p> <p>School-based social workers</p> <p>Civil rights Coordination</p> <p>Restorative Justice support</p> <p>Culturally-specific community partnerships</p>	<p>Progress on Arts Education Master Plan</p> <p>Grow Career Technical Education Programs</p> <p>8<sup>th</sup> &amp; 9<sup>th</sup> Grade Transition Success</p> <p>College and career awareness, exploration and preparation</p> <p>Advanced Learning Supports for Students of Color</p>	<p>School-based Instructional Coaches Across Every School</p> <p>Professional Development for Classroom Educators</p>	<p>Launch the Center for Black Student Excellence</p> <p>Climate Crisis Response and Decarbonization</p> <p>Health and Safety - Airflow and Circulation</p> <p>Innovation Studio</p>

# Projected Class Size Distribution By Grade K - 5

98% of K-5 Classrooms are projected to be below the class size maximums.

The average projected class size for next year is 22.6.

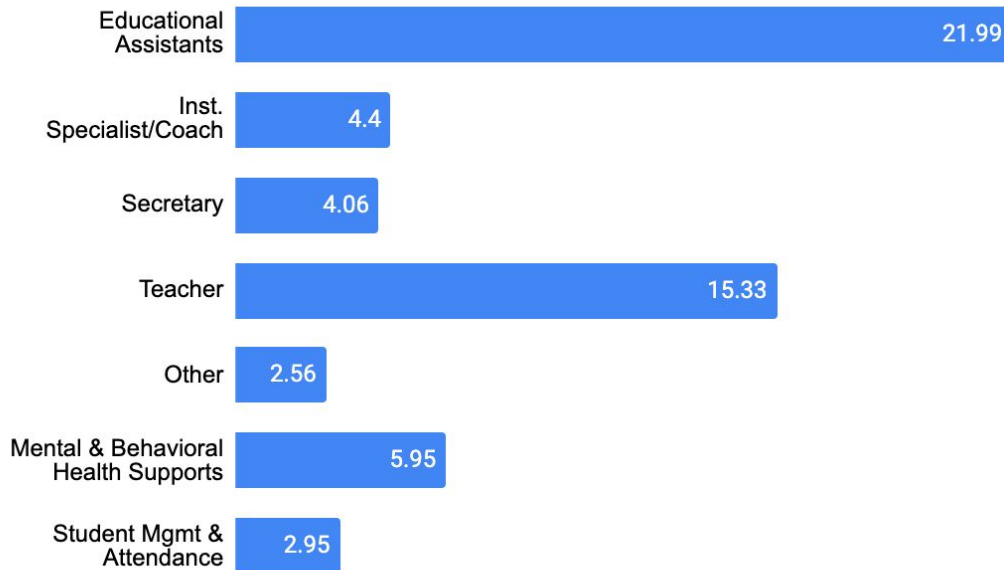


# One-Time ESSER School Improvement Grants

Each school will receive a site-based school improvement grant, ranging from roughly \$100,00 to \$120,000. These site-based grants, offered in direct response to school leaders and educators, will enable principals and their communities to make specifically-targeted investments to close student performance gaps.

Examples of these investments include:

- Contracts Partnerships for Instructional Improvement Services
- Extended Hours for Teacher Professional Development
- Supplies/Materials to enhance the learning experience
- Additional Site Positions - FTE



\* Projected as of April 12, 2023



# Budget Approval and Adoption Timeline



Thank You.

# Appendix

# Strategic Alignment - Superintendent's Leadership Team Priorities and Goals for 2022-2023 School Year

## GOAL #1

By the end of the 2022-23 school year, data gathered will enable us develop a deeper understanding of current resource allocation; reorganize, reprioritize and align to guiding documents; and develop a long-term financial sustainability outlook

## GOAL #2

By April 28, 2023, develop the Superintendent's 2023-24 budget proposal based on ensuring financial sustainability post-ESSER and simultaneously prioritizing key investments to achieve our board and strategic goals

## GOAL #3

By March 31, 2023, develop and submit to the Oregon Department of Education a 4-year integrated budget plan that focuses on outcomes, strategies, and targeted expenditures for the following funds

## PRIORITY #1

### Strategic Alignment

Align dollars, time, and effort to significantly improve organizational efficacy and culture to serve and support our schools, students, families, and educators to thrive and achieve excellence.



# Preliminary General Fund Budget Projections

General Fund	Proposed 2023-24 (in Millions)	Projected 2024-25 (in Millions)	Notes
<b>Biennial State School Fund (SSF) Budget Assumptions</b>	<b>\$9.9 Billion</b>		Based on Feb 22nd estimate of State School Fund released by Oregon Department of Education (ODE).
<b>Beginning Fund Balance</b>	<b>\$86</b>	<b>\$43</b>	Estimated underspend, vacancy savings, and cost-saving exercises this year will help balance the PPS budget during the next biennium.
<b>New Revenue</b>	<b>\$737</b>	<b>\$777</b>	Includes estimates for SSF as well as the local option level, which is expected to grow by \$5M compared to current year.
<b>Total Resources</b>	<b>\$823</b>	<b>\$820</b>	Total Resources includes Revenue and Beginning Fund Balance.
<b>Expenditures</b>	<b>\$780</b>	<b>\$796</b>	Does not include any active reductions for FY25.
<b>Reserves</b>	<b>\$43</b>	<b>\$24</b>	Proposed reserves meet the minimum fund reserve policy, however, biennium outlook not meeting fund balance requirements, nor capable of rebuilding back to 10%.
<b>5% Fund Balance Target</b>	<b>\$41</b>	<b>\$41</b>	Using funds below the 5% threshold for FY25 would require board approval and be incorporated as part of the budget adoption process.

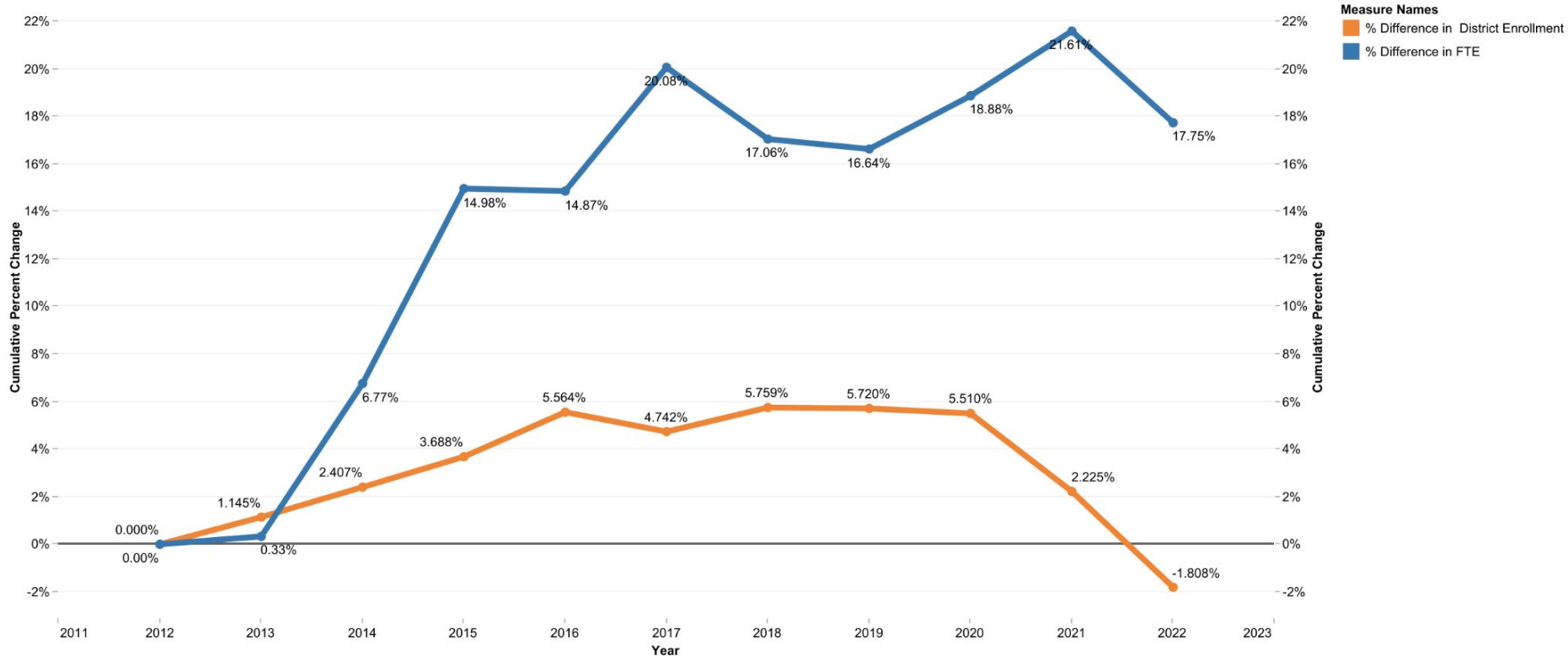
### FTE Change versus Enrollment Change

Cumulative Change from Base Year

District: Portland SD 1J

Position(s): Teacher, Non-Special Ed

Source: Oregon Department of Education



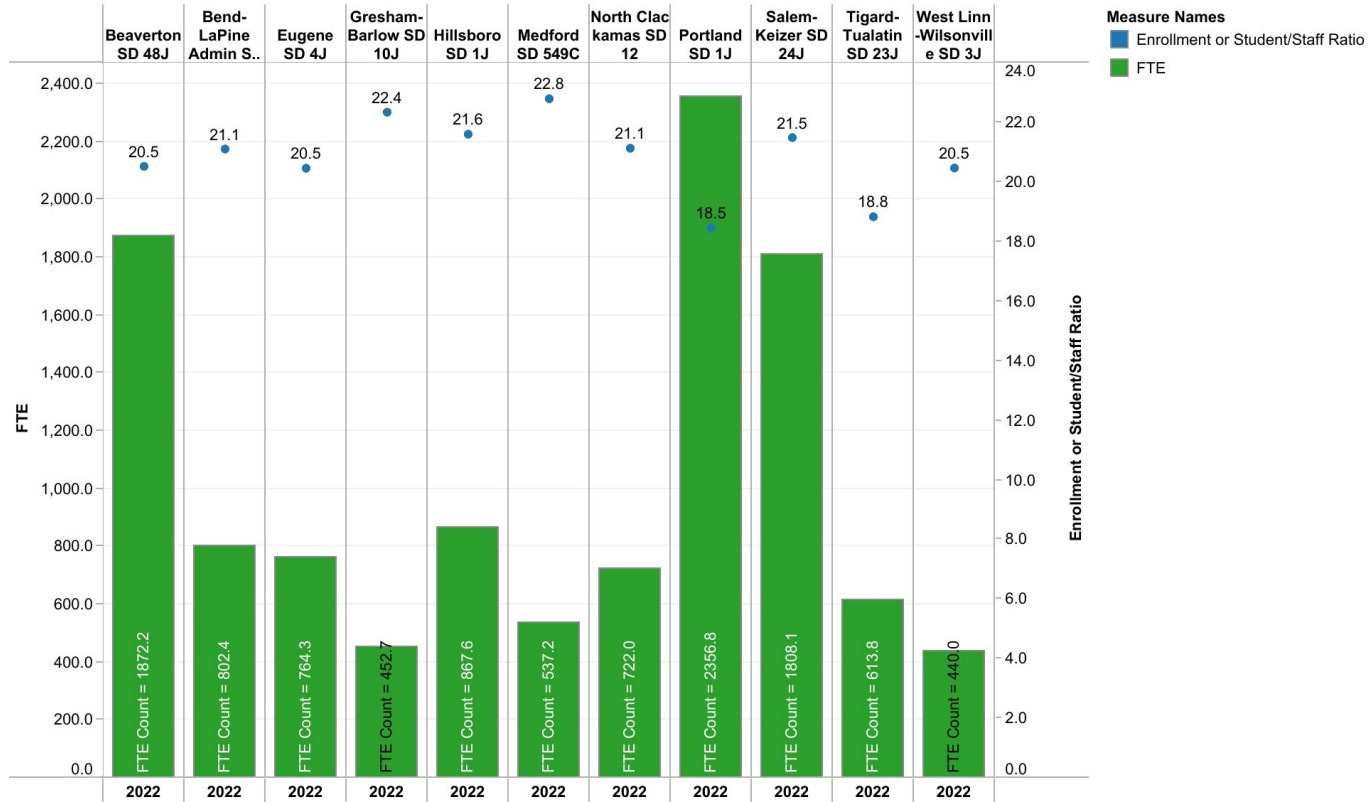
Measure Names  
■ % Difference in District Enrollment  
■ % Difference in FTE

## Staffing Ratios

District(s): Alsea SD 7J, Beaverton SD 48J, Bend-LaPine Admin SD 1 and 9 more

Position(s): Teacher, Non-Special Ed

Source: Oregon Department of Education



### Measure Names

Enrollment or Student/Staff Ratio

FTE

Enrollment or Student/Staff Ratio

# Overview of Federal Stimulus Funds: Elementary and Secondary School Emergency Relief (ESSER I/II/III)

U.S. Congressional Action	K-12 Public School Funding Across the Nation	How much for Oregon Public Schools?	About How Much for Portland Public Schools?*	Must be Invested /Obligated By
<b>CARES Act (Coronavirus Aid, Relief, and Economic Security Act, ESSER I Mar-2020)</b>	\$13.2 billion	\$114 million	\$8 million	Sep-2022
<b>CRRS Act (Coronavirus Response and Relief Supplemental Appropriations Act, ESSER II Dec-2020)</b>	\$54.3 billion	\$484 million	\$33 million	Sept-2023
<b>American Rescue Plan Act (ESSER III Mar-2021)</b>	\$122.8 billion	\$1 billion	\$74 million	Sept-2024

*\*Totals are projected allocations before pass through to other entities and other allocation requirements per federal and state relief guidelines*

# Alignment of ESSER Dollars to Strategic Plan

Forward Together Outcome	Forward Together Goal	2023-24
<b>Cultivate a Culture of Racial Equity and Care</b>	Partnership and collaboration with culturally specific, multiracial partners and community	\$600,000
	RESJ adult learning and site supports	\$2,599,810
<b>Develop an Integrated Instructional Framework</b>	Developmental continuum (PK–12) of the Graduate Portrait	\$7,550,000
	Develop and implement a culturally responsive and culturally sustaining Instructional Framework	\$30,000
<b>Design Learning Experiences that Promote Self-Directed, Future-Ready Learning</b>	Differentiated and flexible learning experiences	\$4,584,243
<b>Implement Multi-Tiered System of Supports (MTSS)</b>	MTSS school-level systems and structures, (i.e Student Intervention Teams, School Climate Teams, and Instructional Leadership Teams)	\$11,309,614
<b>FEMA Reimbursement (HOLD)</b>		\$6,659,858
<b>Safe Operation of Schools</b>		\$1,500,000
<b>Indirect</b>		\$1,483,908
<b>Total</b>		<b>\$36,317,433</b>

# Alignment of IGG Dollars to Strategic Plan

Forward Together Outcome	Forward Together Goal (IGG Plan Strategy)	2023-24 PPS Preliminary Allocation
<b>Cultivate a Culture of Racial Equity and Care</b>	Partnership and collaboration with culturally specific, multiracial partners and community	\$4,188,752
<b>Develop an Integrated Instructional Framework</b>	Developmental continuum (PK–12) of the Graduate Portrait	\$100,000
	Support adult learning related to effective implementation of Instructional Framework	\$2,177,230
<b>Design Learning Experiences that Promote Self-Directed, Future-Ready Learning</b>	Differentiated and flexible learning experiences	\$10,662,118
	Career-related learning	\$1,265,858
<b>Implement Multi-Tiered System of Supports (MTSS)</b>	MTSS school-level systems and structures, (i.e Student Intervention Teams, School Climate Teams, and Instructional Leadership Teams)	\$24,141,770
	Transformative Social Emotional Learning (TSEL)	\$7,024,713
	Restorative Justice Resources	\$1,100,540
<b>Embed System-Wide Data-Driven Continuous Improvement Practices</b>	Data-driven continuous improvement	\$124,990
<b>Indirect</b>		\$1,116,637
<b>Total</b>		<b>\$51,902,608</b>