



PPS Climate Crisis Response, Climate Justice & Sustainable Practices Policy

2022 - 2023 Annual Progress Update



PORTLAND
Public Schools

June 6, 2023

Context

Policy Passed March 2022

PPS Commits to swiftly mobilize resources for climate action to:

- Reducing greenhouse gas (GHG) emissions and minimizing other negative environmental impacts;
- improving our school communities' health and wellness; and
- building a culture of learning, responsibility, and sustainability centered on our values of racial equity and climate justice.
- educate and empower students as leaders in the just transition to a sustainable city and restorative society.

Decarbonization Commitment

Policy Commitments:

- 2030: Reduce Emissions by 50% of 2018&2019 baseline
- 2040: Reach Net Zero GHG Emissions
- 2050: Phase out all fossil fuel infrastructure and equipment in new construction and existing buildings

Climate Justice

The Policy states:

Climate change disproportionately impacts the vulnerable members of our community. Implementation of this policy will prioritize serving people with disabilities, communities of color, and other vulnerable populations.

Advancing the Graduate Portrait

- Transformative Racial Equity Leaders
- Influential and Informed Global Stewards
- Optimistic and Future-Oriented Graduates





Environment

Improved school learning environments enhance student achievement and establish a sense of belonging.



Experiment

Hands-on learning opportunities like rich and vibrant schoolyard ecosystems help students bridge theory to practice.



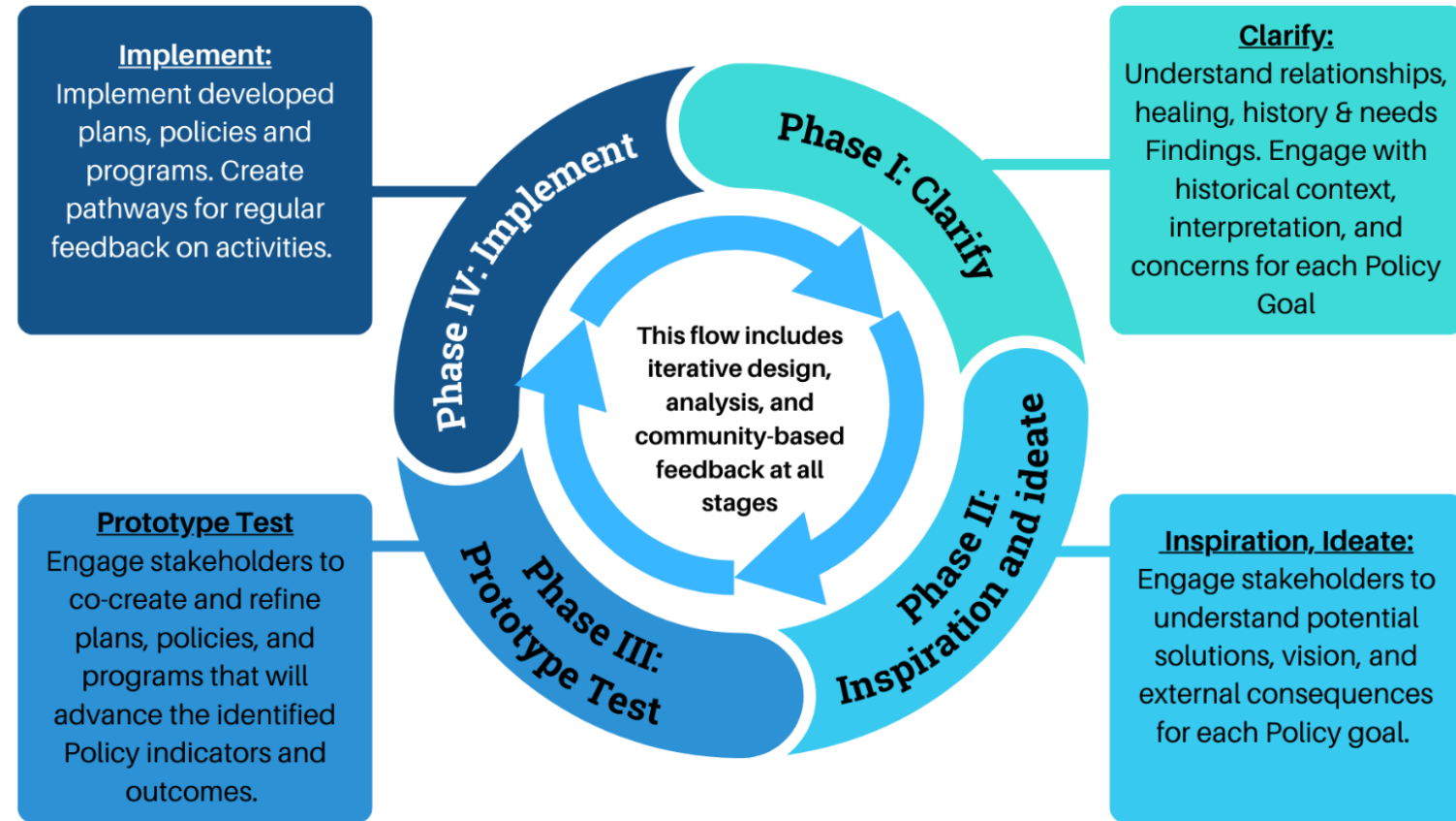
Empowerment

Honoring students' voice and lived experiences to create meaningful change in their schools and beyond.

Approach to Policy Implementation

Phased Approach

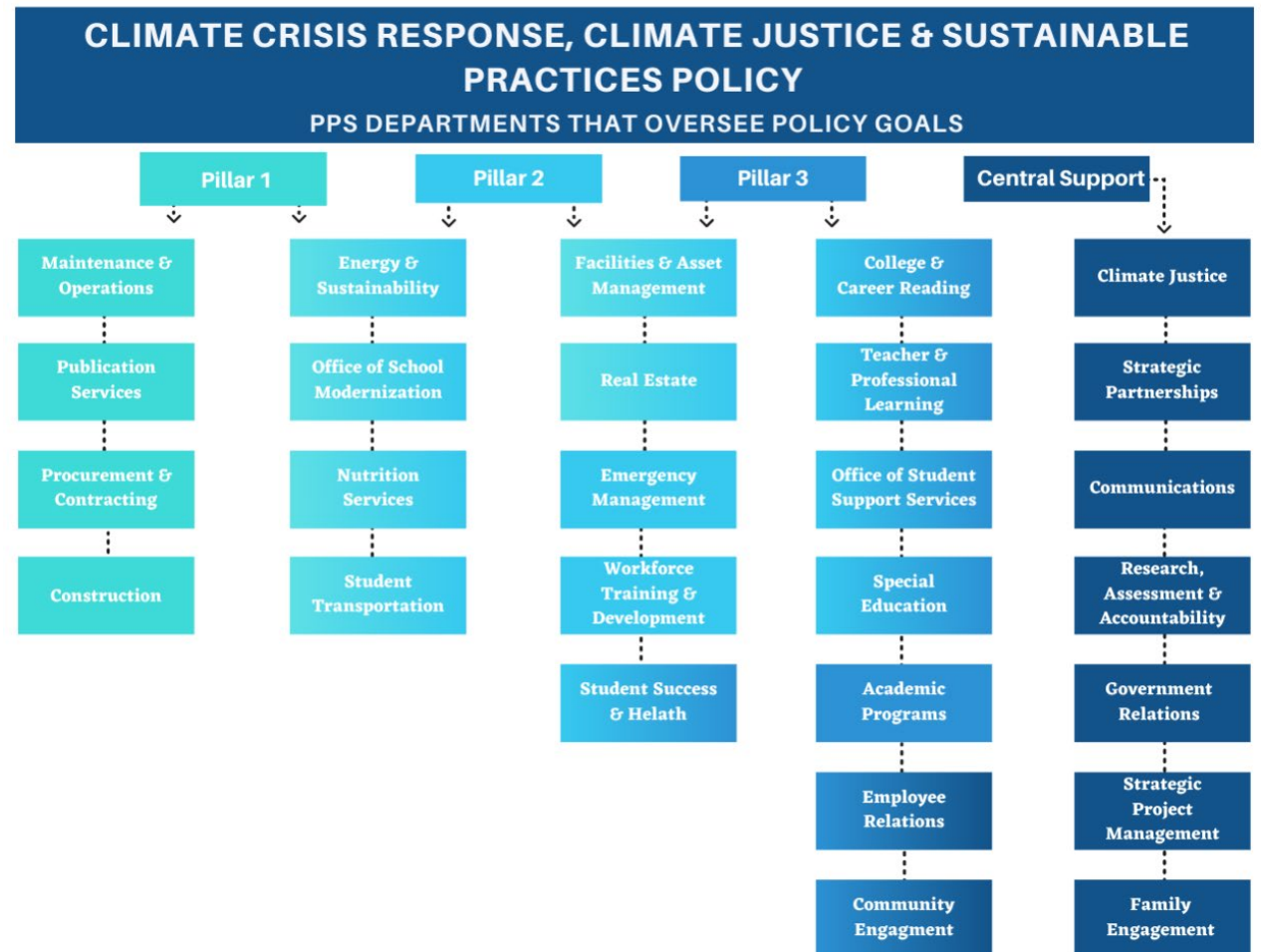
This framework centers equity and community-based design in developing the transformative culture shift necessary to meet the expectations of Policy activities and timelines.



District -wide coordination

Central Office Stakeholder Map

If our goal is to create a new system, then it is important to understand where we are at and to take the time needed to engage deeply in understanding accessibility and equity as we develop the best way to move forward.



2022 - 2023 High-Level Policy Progress

Building a foundation for future success

District -Wide Alignment

- Begin to understand history of racial equity and climate action in Portland at PPS
- Identify existing strands of work
- Define Current State of Policy Progress for Districtwide initiatives

Measuring Progress

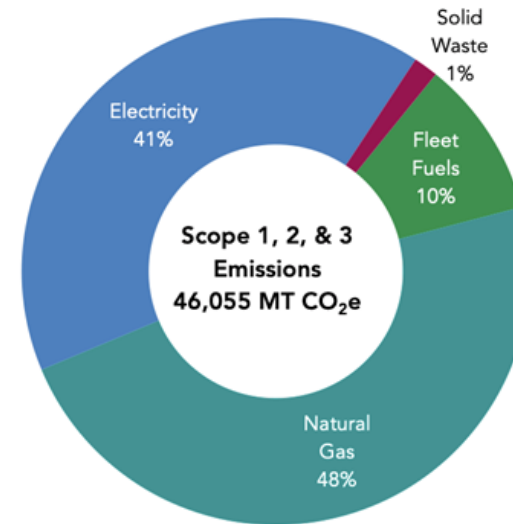
- Define baseline data
- Define Indicators of progress
- Identify gaps in data sources and necessary evaluation tools

Notable Achievements

Progress to Date: Defining our Baseline

- Greenhouse Gas Inventory
- Finalize the Green Schoolyard Green Inventory
- Defined policy baseline data and indicators
- Waste Sensor Installation
- Alignment of PPS Technical Design Standards with Policy Outcomes

Figure 1: PPS's emissions by category

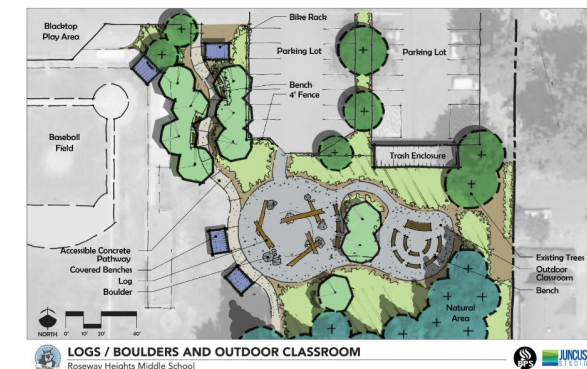


Portland Public Schools' FY19 emissions are roughly equivalent to any one of the following:

- Energy use of 7,000 homes in 1 year
- Driving 12,000 cars for 1 year
- Amount of CO₂ sequestered by 66,000 acres of US forest

Calculated with <https://www.epa.gov/energy/greenhouse-gas-equivalencies-calculator>

SCHOOLYARD DESIGN GUIDELINES



Notable Achievements

Progress to Date: Tangible Action

- Two new electric buses
- Expanded Walk N Roll Buses
- Extended Tri+Met Passes
- Continued prioritization of local food and community partnerships



Notable Achievements

Progress to Date: Student, Community & Teachers

- Climate Crisis Response Committee
- PPS Spring Climate Summit
- Climate Justice Teacher Professional Development
- Launch of the Sustainability Champions Network
- Continuation of the High School Climate Justice Elective



Opportunities for Continuous Improvement

Balancing urgency of the crisis with integrity of process

Strategic Alignment

- Mobilizing teams and resources within PPS to align with Policy goals.
- Lack of systems for collecting data related to climate action and student empowerment initiatives.
- Balancing the many priorities of our District and understanding how this Policy can act as a strategy for PPS priorities.

Negotiating Tradeoffs

- Creating consistent, transparent, and inclusive community discourse around the complex decisions involved in Policy implementation.

Transitioning from reactionary actions to proactive planning

Climate Crisis Response Committee Findings

- 
- Genuine effort has been made by PPS staff on foundational work.
 - Concern about our ability to meet our 2030 and 2040 GHG goals given the current pace, rate and scale of efforts.
 - A large-scale acceleration of progress and integration into “how we do work” is needed.
 - Finds a need for increased resources devoted to Policy implementation and increased transparency and communication on policy progress.
 - Concern that we are not tracking and reporting indicators directly related to environmental justice.

PPS Climate Crisis Work Plan 23 -24

- **Organizational shift** in and staffing Climate Justice at PPS.
- Anticipated PCEF and other **public funding** to advance Policy goals.
- Coordinate a **Decarbonization Roadmap** to inform exactly what resources will be needed and how to best allocated resources to meet our GHG goals.
- Using **Evaluation & Implementation Planning** materials to address high feasibility and high impact activities, bridge data gaps
- **Center environmental justice** in data collection indicators and impacts
- **Restructure communication** and progress data resources this summer.
- Enhance **community engagement** opportunities in school year 2023-2024.

Strategic Direction Moving Forward

PPS Strategic Plan Theme *Embracing Change*

Inclusive, Collaborative, and Data Driven Decision Making -

- Contribute to a centralized data tracking and reporting system
- Define indicators and metrics for any Policy objectives
- Develop a robust, sustainable, and responsive community engagement program

Strategic Advocacy and Allocation of Resources

- Provide resources specifically for capital projects or strategic programs that directly support fulfillment of Policy directives
- Successfully fulfill the scope of work with partners to complete a decarbonization roadmap

Strategic Direction Moving Forward

A PPS Strategic Plan Theme *Embracing Change*

Coordinated and Effective Leadership

- Climate Crisis Staff Advisory Group
- Establish a practice of strategic foresight and sustainable teaming structures
- Provide central communication and leadership

National Recognition

Setting the Bar for School Districts

- NSBA Magna Award
- Feature on Generation180
- NAAEE School District Climate Policy Case Study
- Presentations at:
 - Green Schools Conference,
 - University Council of Education Administrators,
 - Oregon School Board Association,
 - NAAEE Early Education Outdoor Learning Conference

Moving Forward, Together

