



PORTLAND PUBLIC SCHOOLS

Middle Schools Conversion Updates

July 24, 2018



Harriet Tubman Middle School

Update





Multi-Tiered Systems of Support

Community Centered

Equitable Practices

7 PERIOD DAY
Focused on
PLC's &
Intervention
Support

- Reading
- Math
- Attendance
- Behavior
- Social-Emotional Needs

- Partnerships with local organization to provide
- Tutoring Support
 - Club/Extension Activities
 - Character Building
 - Secondary and Post-Secondary Readiness

- Service Learning & Student Leadership Focus
- Intervention Team
- Mandarin (Yr. 2)
- AVID (Yr. 2)
- Grade Level Capstone Projects

- Band
- Dance
- Art
- Technology
- Makerspace
- STEAM
- World Language



Student Engagement

- **Feeder School Luncheon**
Meet and greet with the principal and future students of Harriet Tubman
- **Grade Level Skate Party**
Gresham Skate World: Every feeder school participated and students were given specially designed Harriet Tubman t-shirts to wear.
- **Elective Survey**
Introduction of potential course offerings
- **Right to Return**
75 enrollment slots for displaced Albina & N/NE residents
- **A Dream Deferred**
College Board conference highlighting the future of African American education
- **8th Grade Leadership Day**
Tentatively scheduled for August



Staff Engagement

- **Teacher Feedback Sessions**
Opportunity to update potential team members in preparation for the merge
- **Tuesday Dinner Nights**
Team planning and collaboration with feeder school teachers. Master schedule planning and feedback
- **Off-Campus Work Groups**
Discipline team met to discuss data, curriculum and instructional needs. TOSAs invited to attend and provide support as needed
- **Master Schedule**
Developed a master schedule with staff input
- **Special Education Retreat**
SPED Program admin, ISC and Learning Center teachers
- **PBIS Team Retreat**
Led by Drew Laurence, Climate TOSA
- **Team Building for HTMS Staff**
Staff participated in rowing PD with Rose City Rowers
- **Fine Arts Department**
Collaboration with arts TOSA, Kristen Brayson, to determine program needs for dance and band



Parent & Community Engagement

- **Monthly Community Engagement Meetings**
Hosted at each feeder school
- **Parent Retreat @ Kennedy School**
Vision planning and identifying the needs of the school
- **Sabin and Irvington Auction**
Participation in PTA fundraising efforts
- **Emmanuel Temple Church (Albina) Youth Sunday Speaker**
Highlight vision and extend tools of support for student and family empowerment
- **Latino Information Session**
Held at Martin Luther King Jr. School to personally address the parent concerns and needs of their student community
- **Harriet Tubman M.S. Walk-Through**
Assessment of school campus and identification of volunteer opportunities
- **Alumni Gathering:**
Special event in the fall to acknowledge past students and staff of Harriet Tubman Middle School.



1923

GREGORY HEIGHTS SCHOOL

ROSEWAY HEIGHTS MIDDLE SCHOOL





Community Partnerships

- Partnerships with local organizations
- 4 service learning days per year
- Meetings/events held at satellite sites

Multi-Tiered Systems of Support

- Reading
- Math
- Attendance
- Behavior
- Social-Emotional Needs

Equity

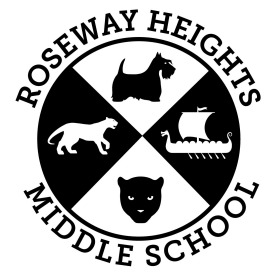
STEAM and AVID

- Theatre
 - Dance
 - Art
 - Technology
 - STEM
 - AVID
- Aligned with Madison H.S.

6 Period Day Focused on Student Needs

- Academy model
- Dual Language
- Advisory period
- Intervention Team
- Co-teaching
- 2 preps per teacher

RHMS Stakeholder Activities



Communications:

- Revised website
- Using community partners to support parent access to information
- Principal's coffees on & off-site

Rethinking Parent Representation:

- Support from community partners to gather input
- "Satellite" groups off campus

School Opening:

- Orientation
- Back to School BBQ
- Community Care Day

Gathering Input:

- Community Meetings
- Assemblies/Surveys
- Listening Sessions

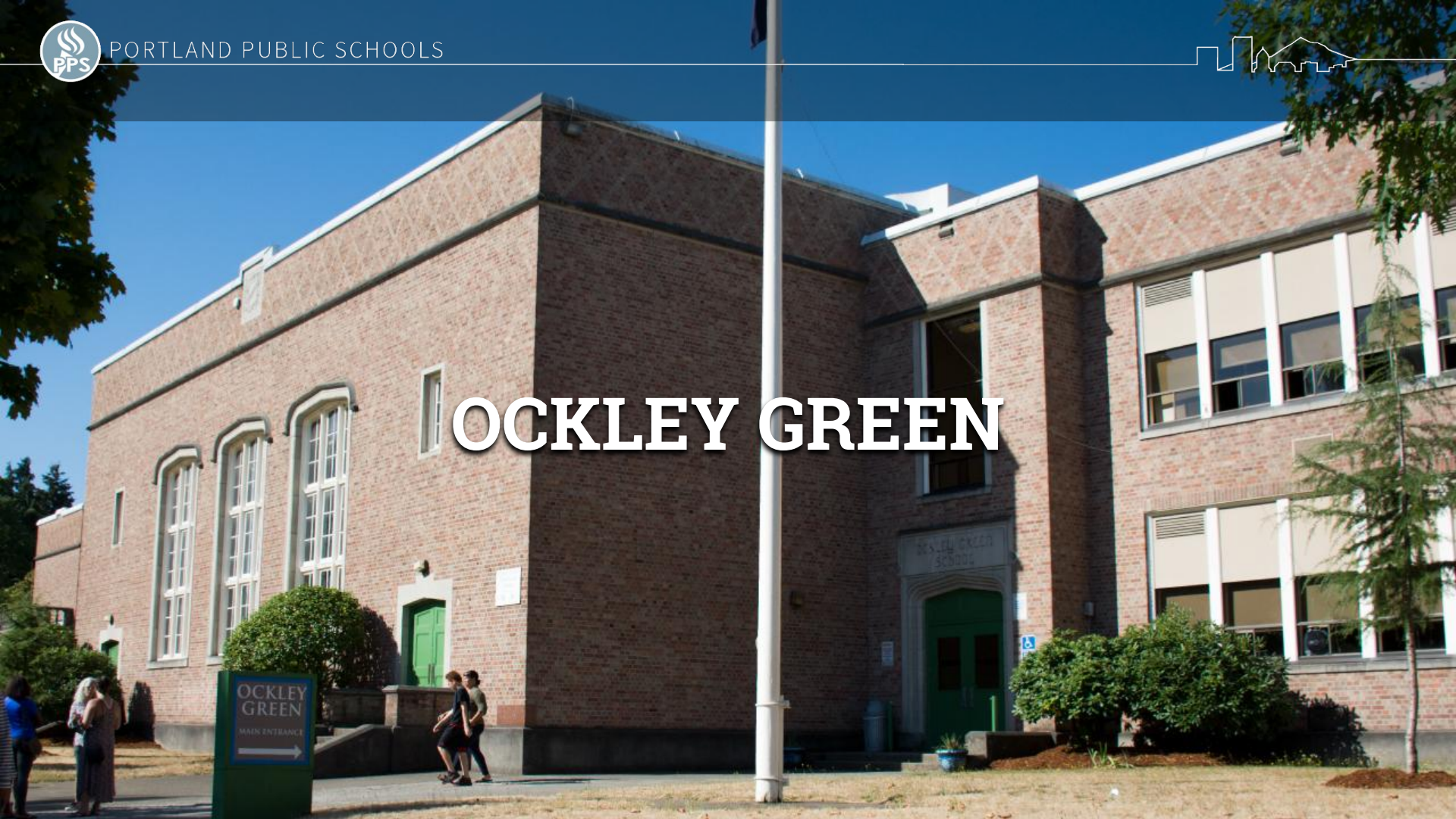
Student Voice:

- Leadership
- Community circles
- Racial affinity groups as well as Muslim Alliance & GLBTQA groups
- Systems for reporting concerns



OCKLEY GREEN

OCKLEY GREEN
MAIN ENTRANCE
→





PORTLAND PUBLIC SCHOOLS



Ockley Green Middle School Updates

New Principal

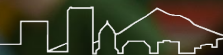
- Kristina Howard

Orientation:

- Week 1: AVID Institute and 2018-19 planning with Ockley teacher team
- Week 2: Reviewing data and Comprehensive Achievement Plan (CAP)
- Weeks 3 and 4: Scheduling listening sessions with all stakeholder groups (staff, parents, students)

In the coming weeks we will:

- Use the information to create priorities based on data and feedback
- Align professional development, CAP, and other areas to the priorities



ACCESS @ Vestal ACCESS @ Lane Update



Collaboration & Communication

- Principals have met more than 10 times; in-person and by phone to plan for ACCESS
- July update from principals sent to the ACCESS community; August update coming soon
- Vestal and ACCESS Academy PTAs are in communication

Community and Culture Building

- PTA is coordinating summer events (kickball) at Vestal
- A cross-departmental team is planning to facilitate community integration
- Community Care Day

PE

- All grades will have two PE classes in the gym and one yoga class in the play court

Transportation and Schedule

- Loading and unloading at Vestal will not be on the playground
- Bus routes to be announced in August
- Vestal K-5: 8:00 am - 2:15pm; ACCESS @Vestal: 8:20 am - 2:35pm

ACCESS @Vestal

Staffing

- Special Education Learning Center teachers 1.50 FTE
 - .50 FTE placement ACCESS @Vestal
 - 1.0 FTE ACCESS @Lane hired during external round
- Vacancies - positions were posted and ACCESS team will be scheduling interviews for:
 - Math .50 FTE
 - Counselor 1.0 FTE
 - School secretary 1.0 FTE
 - School Climate Specialist 1.0 FTE split with ACCESS @Lane
 - PE 1.0 FTE split with ACCESS @Lane
 - Spanish Enrichment .50 FTE
 - Drama (.50 FTE shared with Vestal)



ACCESS @Lane

Collaboration & Communication

- Meetings between former ACCESS principal and Lane principal
- FAQ communications sent to both school communities

Community and Culture Building

- ACCESS PTA working on scheduling community events
- A cross-departmental team is planning to facilitate community integration

Science Classrooms

- One science classroom is ready, one will be upgraded by Facilities to include: electrical outlet drops, eye wash station and sink

Transportation and Schedule

- Bus routes to be announced in August
- Lane and ACCESS @Lane have same start/end times: 9:15am-3:45pm

ACCESS @Lane

Staffing

- Special Education Learning Center teachers 1.50 FTE
 - .50 FTE placement ACCESS @Vestal
 - 1.0 FTE ACCESS @Lane hired during external round
- Vacancies - positions were posted and ACCESS team will be scheduling interviews for:
 - Principal - interviews scheduled/completed by Senior Leadership
 - Advanced Math/Technology 1.0 FTE
 - School Climate Specialist 1.0 FTE split with ACCESS @Vestal
 - PE 1.0 FTE split with ACCESS @Vestal
 - Mandarin placement through Confucius Program



PORTLAND PUBLIC SCHOOLS



ROSE CITY PARK



Rose City Park

Anh Nguyen-Johnson announced as Assistant Principal

Communications

- Web page being updated

School Slogan

- Slogan has been approved: “A community learning and growing together”
- In Vietnamese: Một cộng đồng học tập và cùng nhau phát triển

Grand opening ceremony on Thursday August 30th

Parent organization is arranging meet up opportunities by grade level

IRCO selected as new SUN School lead agency



Facilities and Asset Management

Middle Schools Conversion Project Update



Project Overview

Tubman – 93,000 SF – Enhanced air filtration mechanical system, new roof, new west windows, science classrooms upgrades, new dance studio, other interior upgrades.

Roseway Heights – Adding 3 new science classrooms, upgrading 2 existing science classrooms, converting small gym to dance studio, modifying restroom to be ADA accessible.

Rose City Park – Adding ADA accessible restrooms, and modifying existing restrooms, modifying interior corridor layout for better circulation, new flooring, paint, and other interior finish items, ADA stair lift, Phase 2 – includes addition of an elevator.

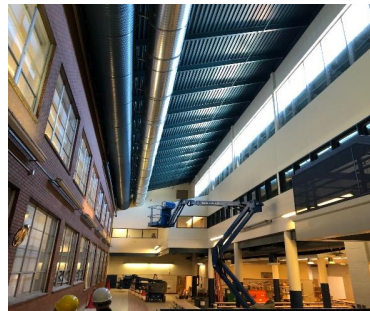
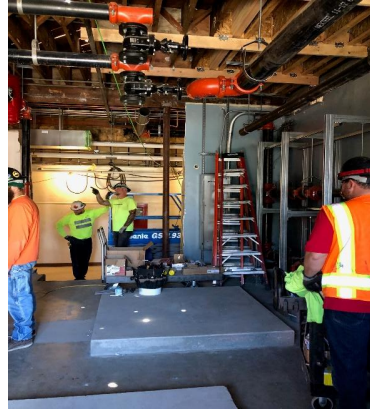


Tubman – View from art classroom

What Has Been Done So Far?

Tubman

- Roofing – 80% complete
- Heating/Ventilation/Air-Cond. – 70% complete
- New electrical service – 95% complete
- Lighting/Power/Data – 60% complete
- Plumbing – 70% complete
- Science classrooms – 60% complete
- New dance studio – 60% complete
- Windows – 50% complete
- Other interior finish Items – 60% complete



Roseway Heights

- Science classroom additions – 70% complete
- Upgrade of existing science classrooms – 80% complete
- Dance studio – 85% complete
- ADA bathroom modification – 70% complete
- Other interior finish upgrades – 75% complete

Rose City Park

- ADA bathroom additions – 50% complete
- Corridor modifications – 70% complete
- New flooring – 50% complete
- ADA stair lift – 40% complete
- Other interior finish upgrades – 50% complete



Overall Schedule Update

Tubman

- Currently tracking to be ready for the start of school 8/27.
- **Remaining Schedule Risk Items**
 - Successful startup of HVAC system
 - Balancing/testing/commissioning of HVAC system
 - West window delivery & installation
 - Flooring delivery & installation
 - Major move of classroom contents & furniture



Tubman – New HVAC chiller unit

Roseway Heights

- Currently tracking to be ready for the start of school 8/27.
- **Remaining Schedule Risk Items:**
 - Science room countertops (plan to use temporary tops if permanent countertops are not installed by the time school starts)

Rose City Park

- Currently tracking to be ready for the start of school 8/27.
- **Remaining Schedule Risk Items:**
 - Any unforeseen delays related to material delivery.

