



## Sick Child

### Performance Standard

#### § 1302.47(b)(7)(iii) Safety Practices

(b) A program must develop and implement a system of management, including ongoing training, oversight, correction and continuous improvement in accordance with §1302.102, that includes policies and practices to ensure all facilities, equipment and materials, background checks, safety training, safety and hygiene practices and administrative safety procedures are adequate to ensure child safety. This system must ensure:

(7) Administrative safety procedures. Programs establish, follow, and practice, as appropriate, procedures for, at a minimum:

(iii) Protection from contagious disease, including appropriate inclusion and exclusion policies for when a child is ill, and from an infectious disease outbreak, including appropriate notifications of any reportable illness;

---

### Policy

PPS Head Start promotes a healthy environment for children by responding to symptoms of illness and following state and local communicable disease exclusion guidelines.

### Rationale

**Exclusion:** Exclusion is needed for some infectious diseases to control contamination and spread.

Communicable disease prevention is important to support the health of the school community.

Attendance data will allow stakeholders to identify any clusters of illness or student and family support needed.

**Inclusion:** Although young children often become ill, excluding children from early care and education programs can be stressful for families, and many exclusion decisions made by staff are not warranted.

Most infections in young children are mild and are spread by children who do not have symptoms.

Excluding children with mild illnesses is unlikely to reduce the spread of most infections in early care and education settings. The most important reason for exclusion is if the child can't take part in activities and the staff can't care for the child. (source: [Caring for Our Children Standards](#))

---

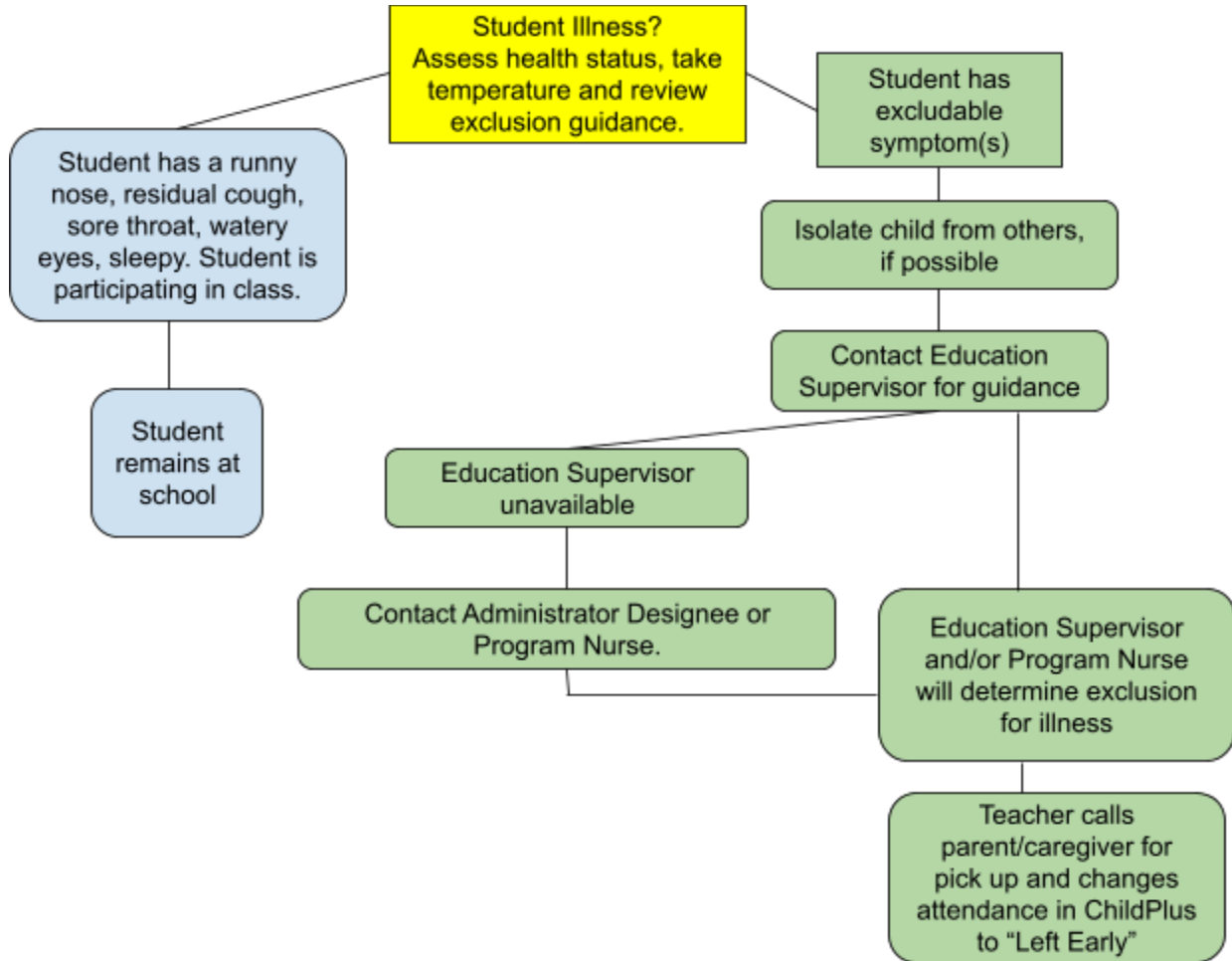
### Procedure

#### Caring for a Sick Child

1. Staff meet children and parents as they enter the classroom and use this opportunity to check on health and other issues. Staff will utilize the Oregon Department of Education, Oregon Early Learning Division, and Multnomah County Public Health Department illness exclusion guidance to determine if a student should remain at school.
2. If the student is displaying symptoms of illness during the school day, isolate the child from the other children in a way that is nurturing to the child and as much as classroom/office space

allows. When needed, provide the child with a resting mat or napping cot to lay on while they are waiting. Be sure to sanitize the rest mat or napping cot after use.

3. **Before** sending a student home:



4. Parents/caregivers are to pick up children from the classroom for any excludable condition outlined within the Oregon Department of Education exclusion guidance.
5. Students with a reportable diagnosed communicable disease (see list below) will be excluded from school. An MESD Student Communicable Information Form (SCIF) will be completed. Head Start Program Nurse will work with MESD and Multnomah County for further guidance.
  - a. Varicella (chicken pox), Pertussis (whooping cough), Measles, hMPXV (mpox), Meningitis
6. Head lice is not a school-restrictable disease according to Oregon Law. Head lice in the school setting should not disrupt the education process.

Reference: CFOC [3.6.1.1](#)/ [3.6.1.4](#)