

IDA B WELLS HS MODERNIZATION PROJECT

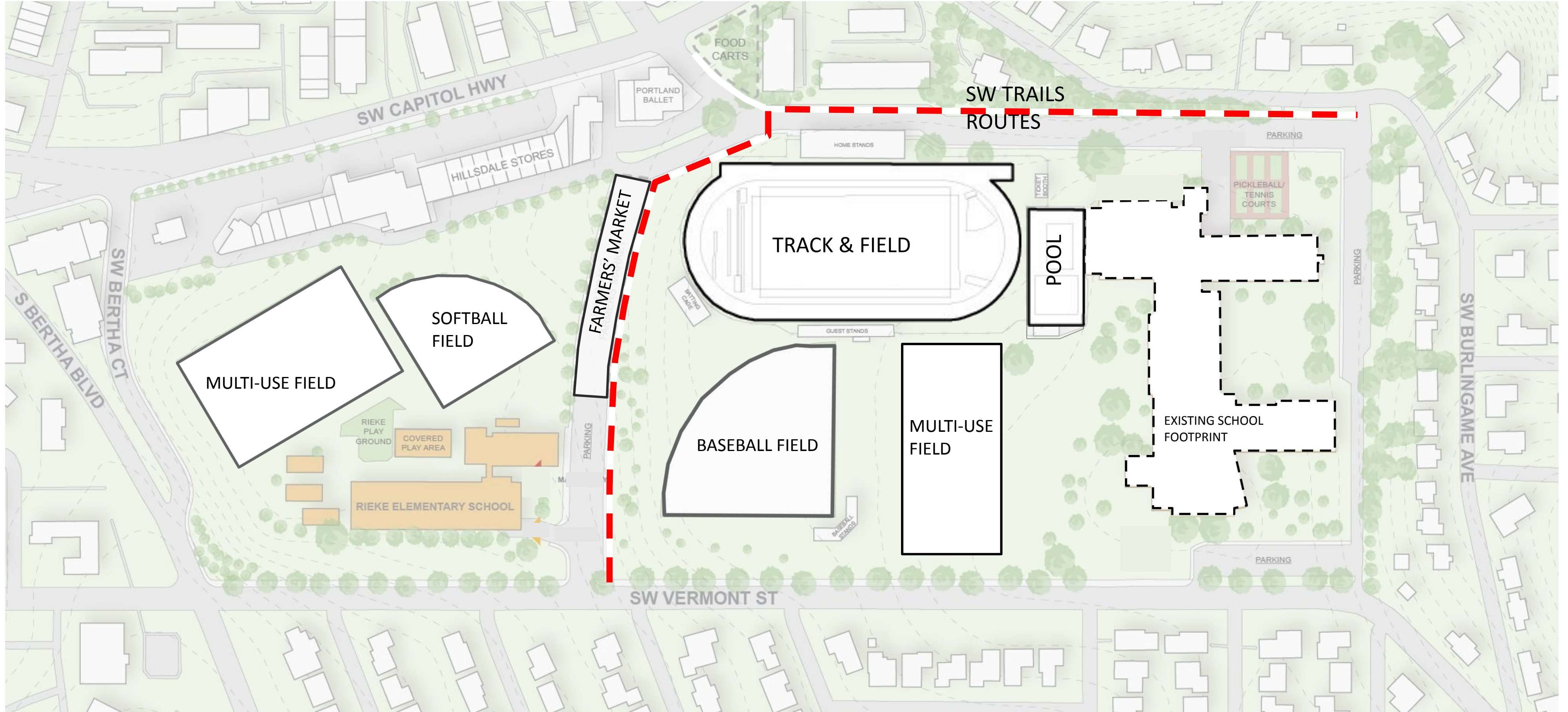
Existing Site

Scheme 1: E-W Field Orientation

Scheme 2: N-W Field Orientation

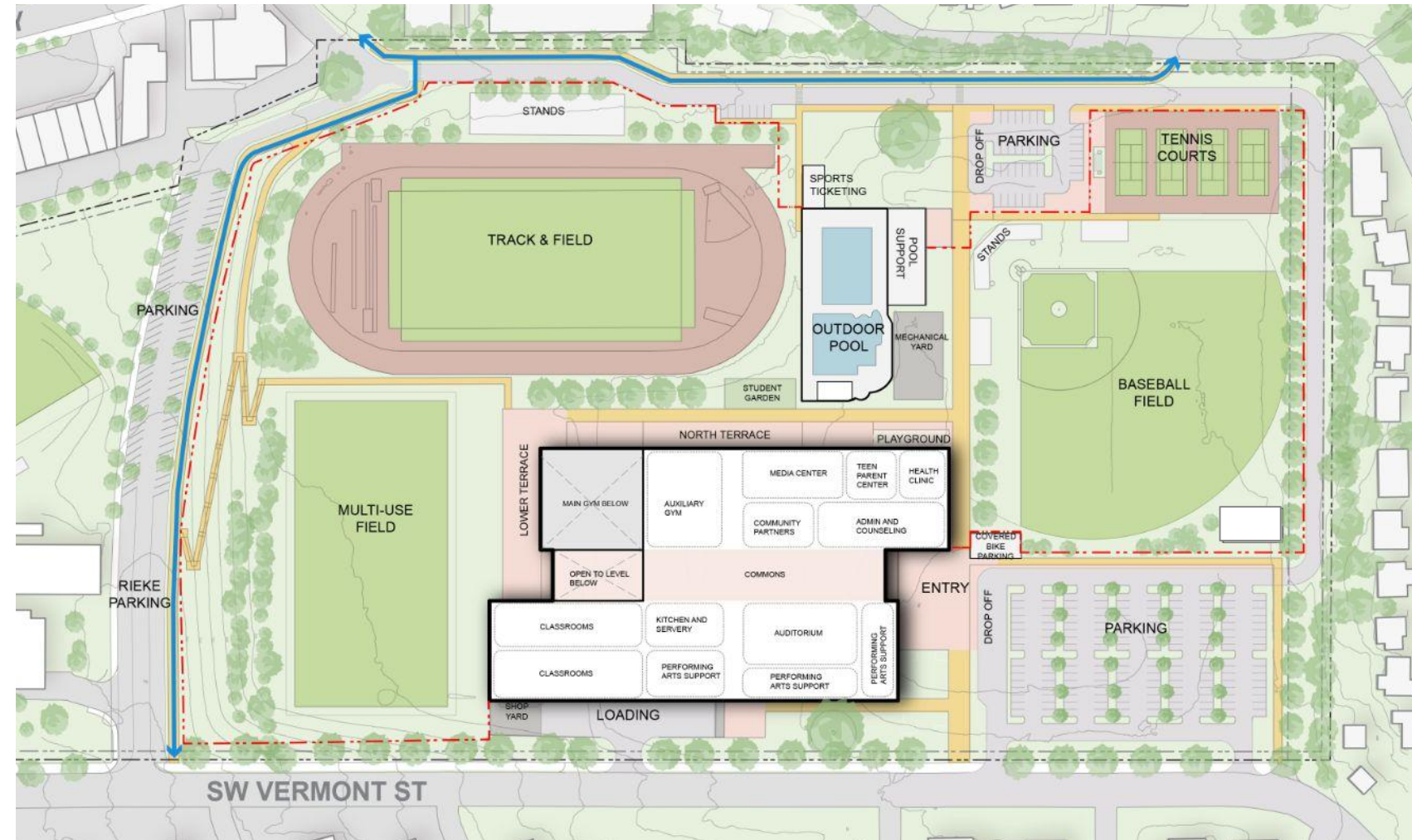
Cost Comparison

EXISTING SITE - MAJOR ELEMENTS

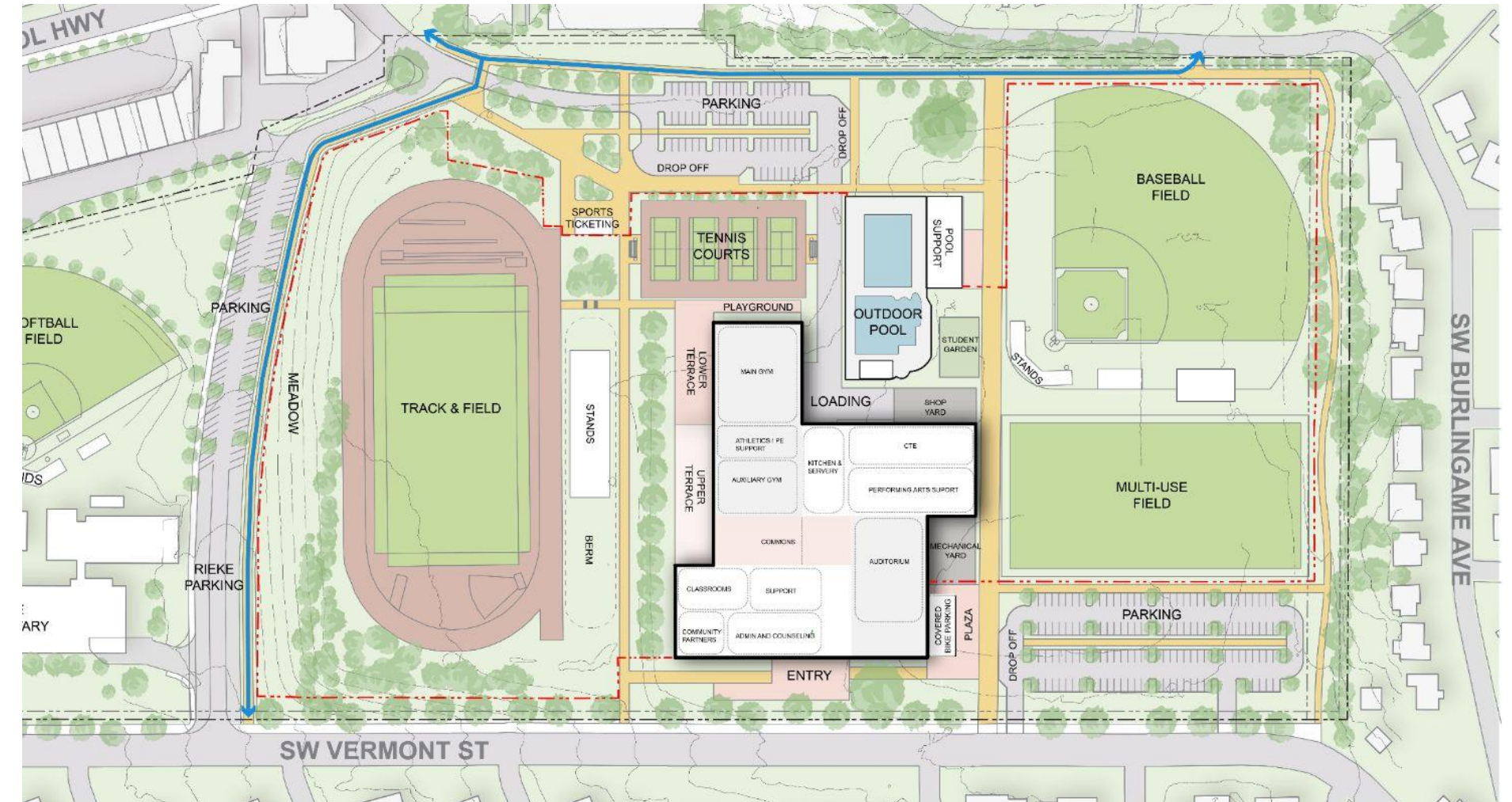


SUMMARY

SCHEME 1

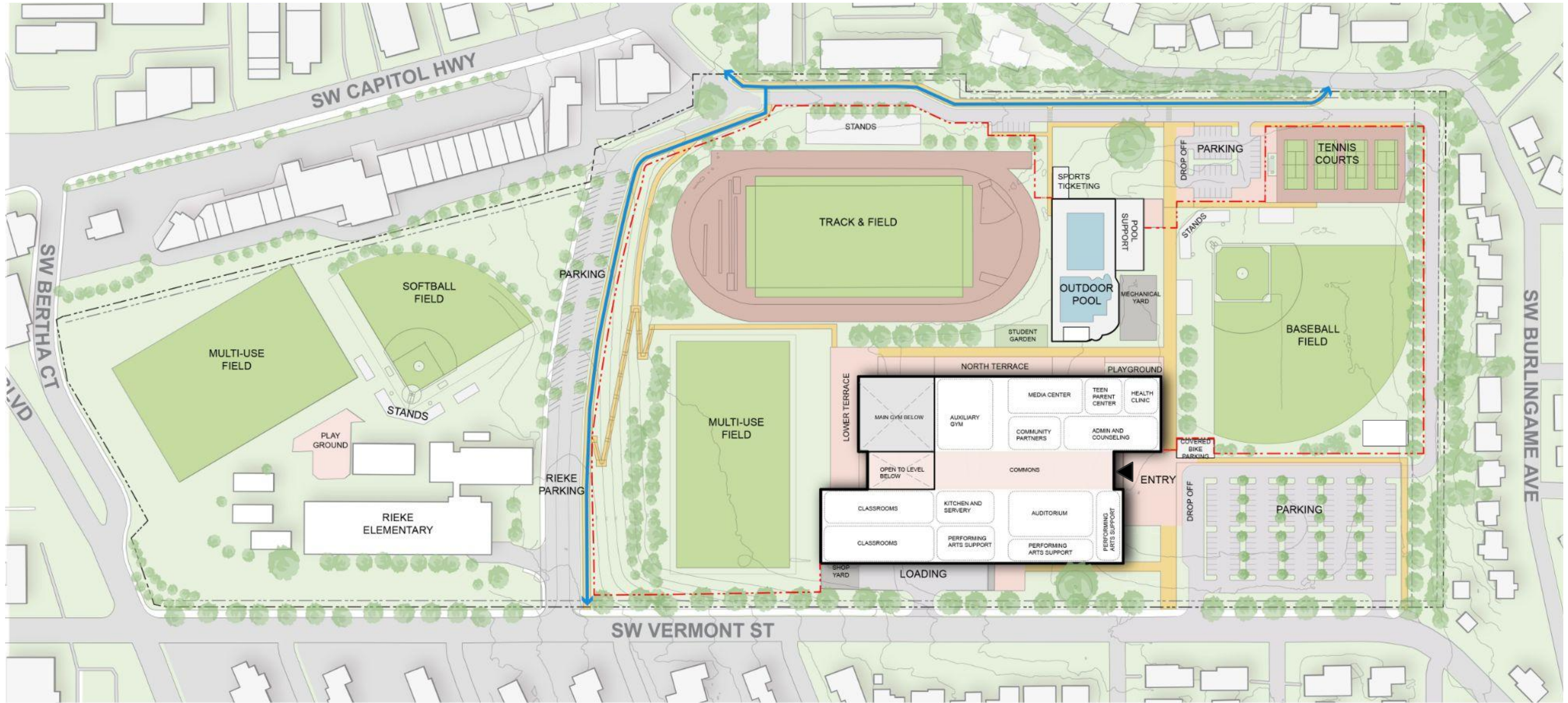


SCHEME 2



<ul style="list-style-type: none"> ● Track & Field remains in place with improvements 	<ul style="list-style-type: none"> ● Track & Field in optimal N-S orientation
<ul style="list-style-type: none"> ● Minimal Track & Field disruption during construction 	<ul style="list-style-type: none"> ● More space for construction staging
<ul style="list-style-type: none"> ● Pathway connection to Rieke parking and fields 	<ul style="list-style-type: none"> ● Direct pedestrian connection to Capitol Highway
<ul style="list-style-type: none"> ● Main parking lot and drop-off near building entry 	<ul style="list-style-type: none"> ● Parking lots and drop-offs near Capitol Hwy and Vermont St.
<ul style="list-style-type: none"> ● Vehicular connection between the two parking lots 	<ul style="list-style-type: none"> ● Vehicular access at opposite ends of building
<ul style="list-style-type: none"> ● Separation between school and pool offers flexibility with building footprint 	<ul style="list-style-type: none"> ● Less flexibility with building footprint due to pool and track locations
<ul style="list-style-type: none"> ● 3-story building height 	<ul style="list-style-type: none"> ● 4-story building height

SCHEME 1



SCHEME 01



KEY:

Securable Perimeter

SW Trails



SCHEME 1 - RESPONSE TO KEY DESIGN DRIVERS



Improved SW Trails path **welcomes pedestrians coming from Capitol Highway and provides a safe route to the building entry**

North-South path directs pedestrians from Capitol Hwy and Vermont Street to the building entry plaza and provides **community access across the site after-hours**

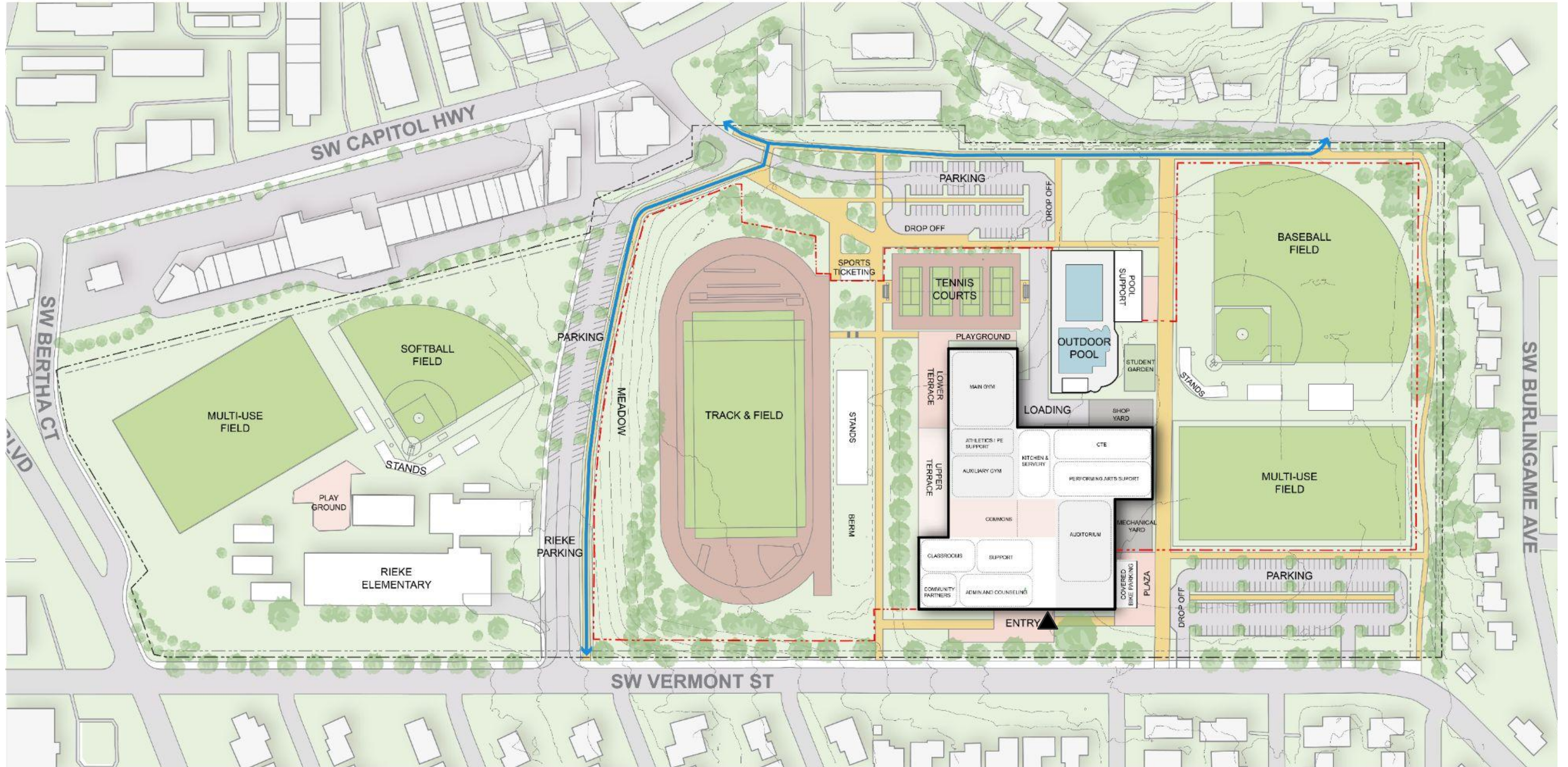
Building sits west of existing school and south of existing pool and track. Building form takes advantage of sloping site and **steps down to reduce the overall building scale**

SCHEME 1 - MASSING



View from Capitol Hwy Approach

SCHEME 2



SCHEME 02



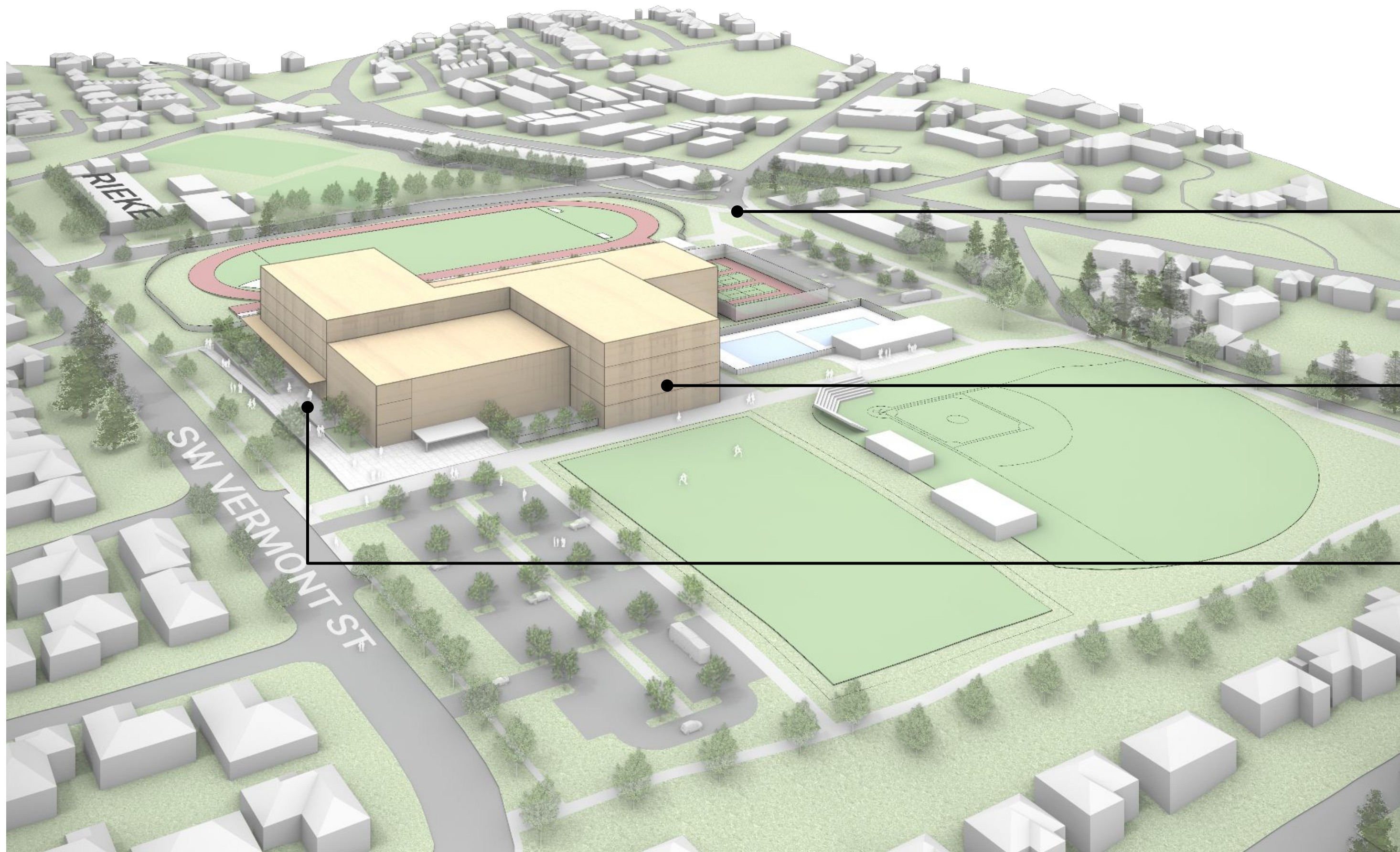
KEY:

Securable Perimeter

SW Trails



SCHEME 2 - RESPONSE TO KEY DESIGN DRIVERS



Pedestrian plaza adjacent to Capitol Highway campus entrance provides **direct and visible approach to building** from the North

Building sits west of existing school, south of existing pool, and east of relocated track. More **compact building form with north-south pedestrian connections across campus** on two sides.

Main entrance faces Vermont St. with **direct pathways connecting it to both campus approaches** and parking lots

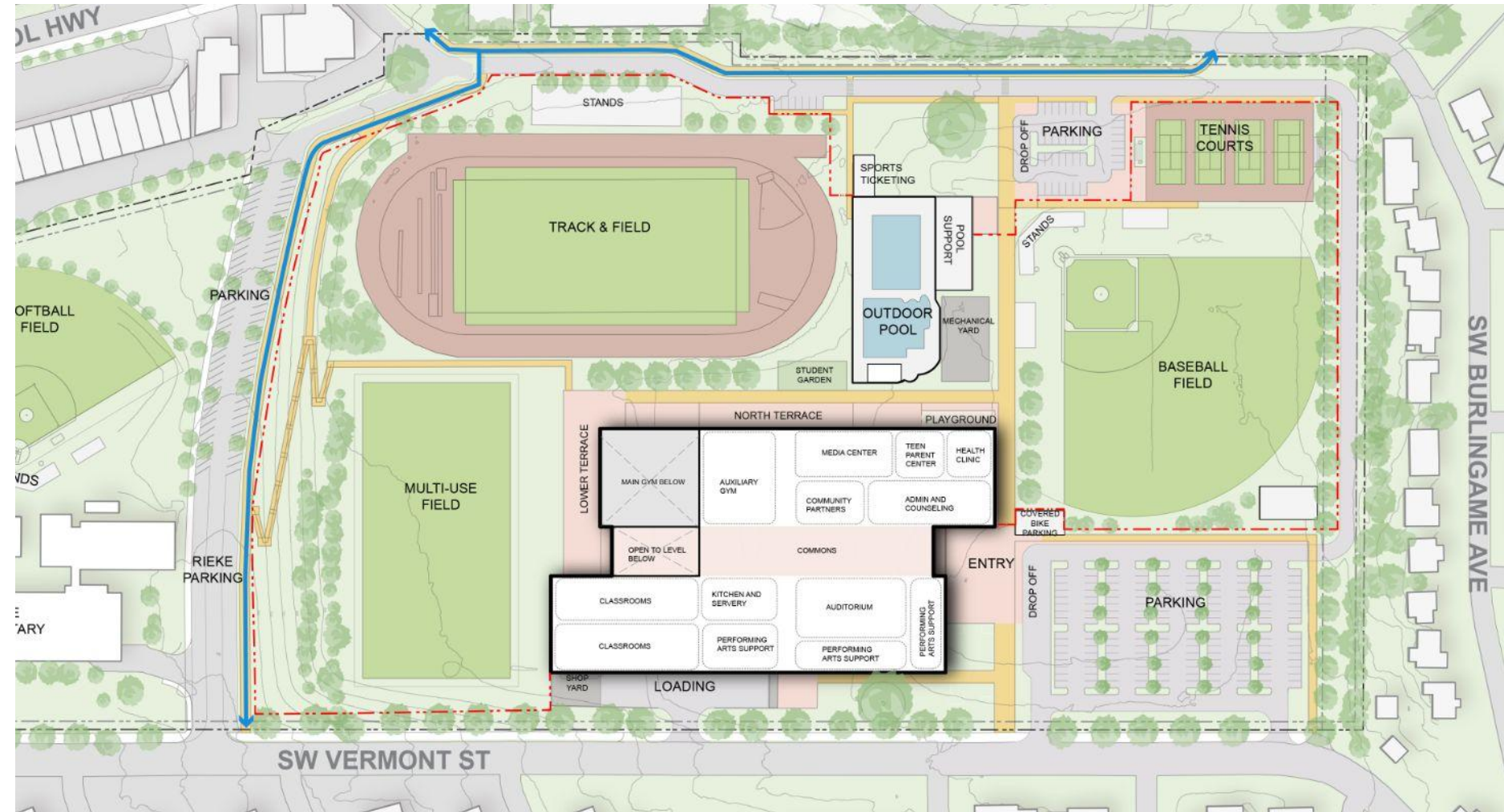
SCHEME 2 - MASSING



View from Capitol Hwy Approach

COST ESTIMATE SUMMARY

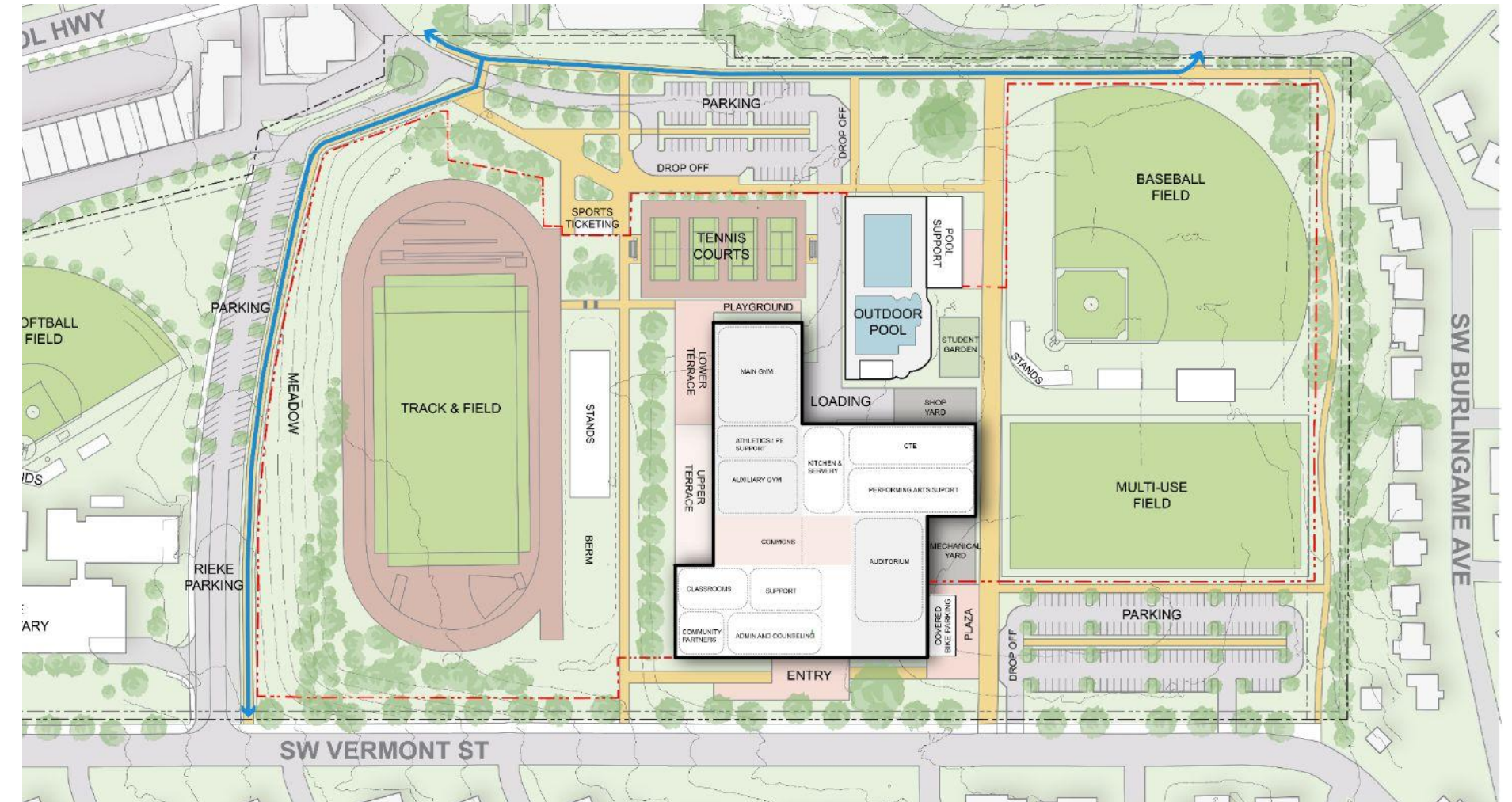
SCHEME 1



Total Project Cost:

\$425M - \$435M

SCHEME 2



Total Project Cost add:

+ \$6M - \$8M

*assumes 2028 building opening date; 2029 project completion