



**ALL HANDS RAISED**  
Education, Equity & Excellence

Presentation to Portland Public School Board  
April 14, 2015

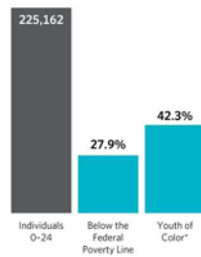
## Our Footprint

The All Hands Raised Partnership includes more than 300 individuals and organizations who have raised their hands to improve educational outcomes for kids throughout Multnomah County.

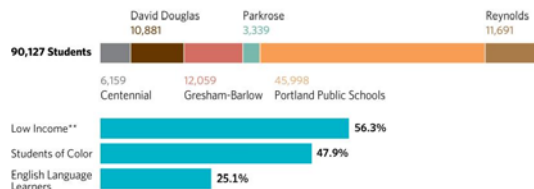
Our six partner school districts—Centennial, David Douglas, Gresham-Barlow, Parkrose, Portland Public Schools and Reynolds—are central to this Partnership.



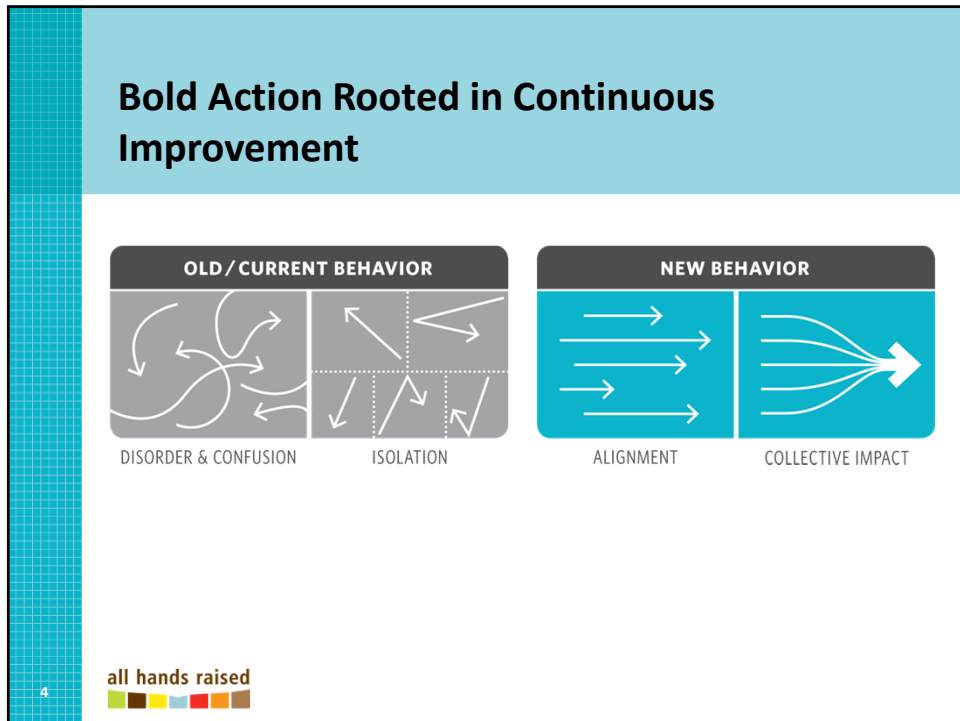
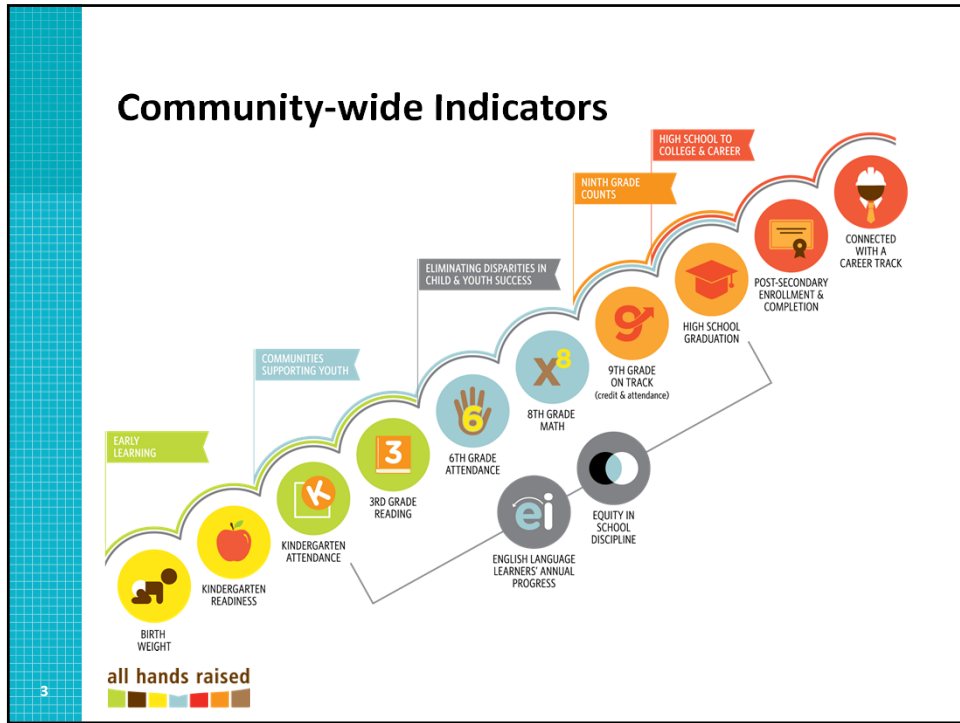
Multnomah County 0-24 Demographics



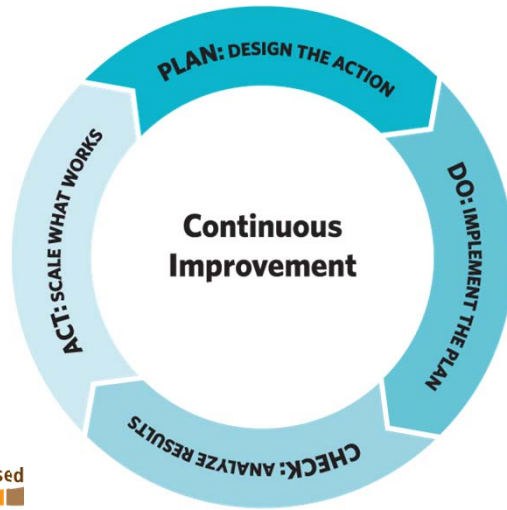
Multnomah County K-12 Demographics



\* These figures rely on data from the U.S. Census Bureau's American Community Survey, which has been shown to undercount communities of color.  
 \*\*"Low income" indicates students eligible for free or reduced price meals because their families earn less than 185% of the federal poverty level.



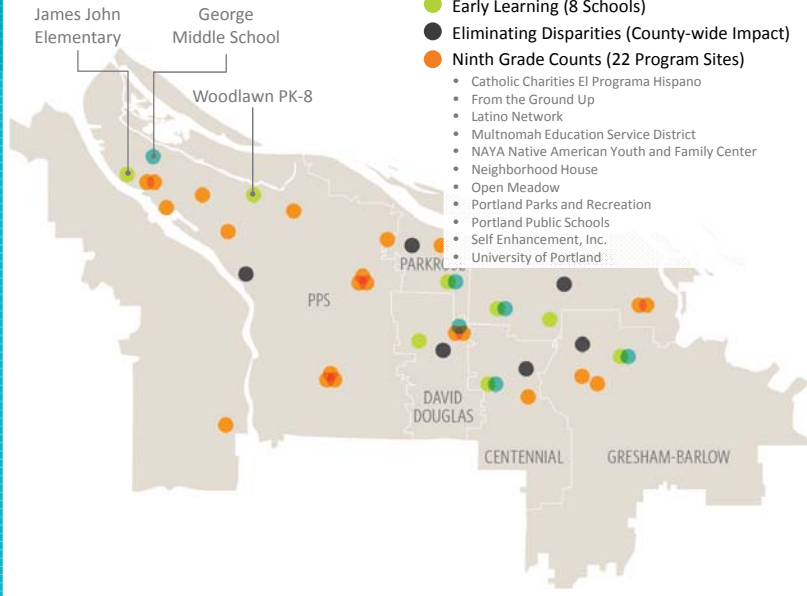
## Bold Action Rooted in Continuous Improvement



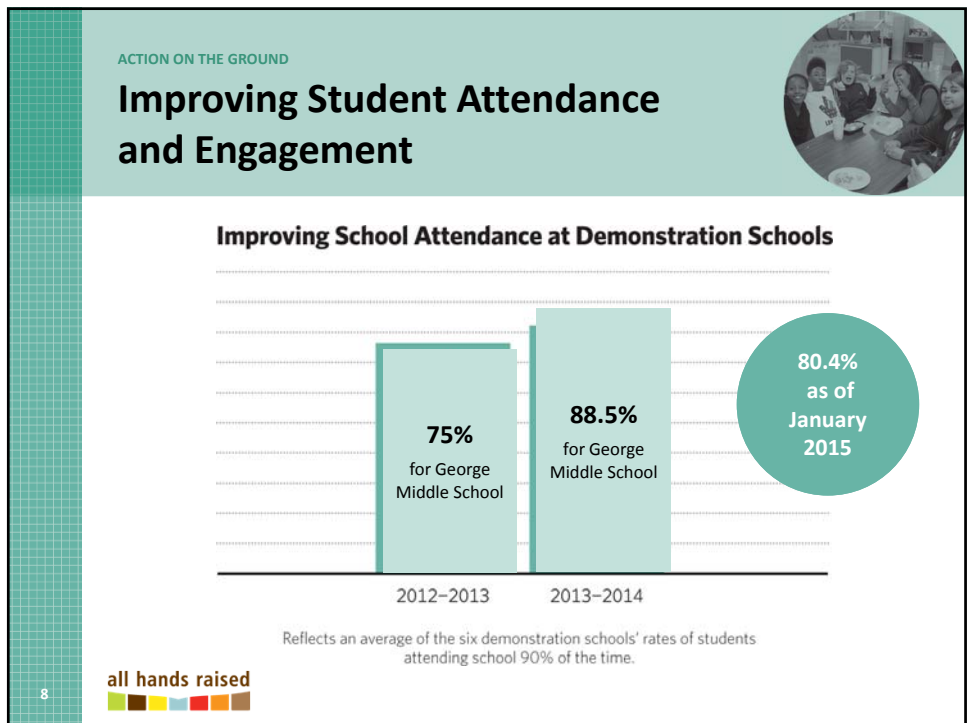
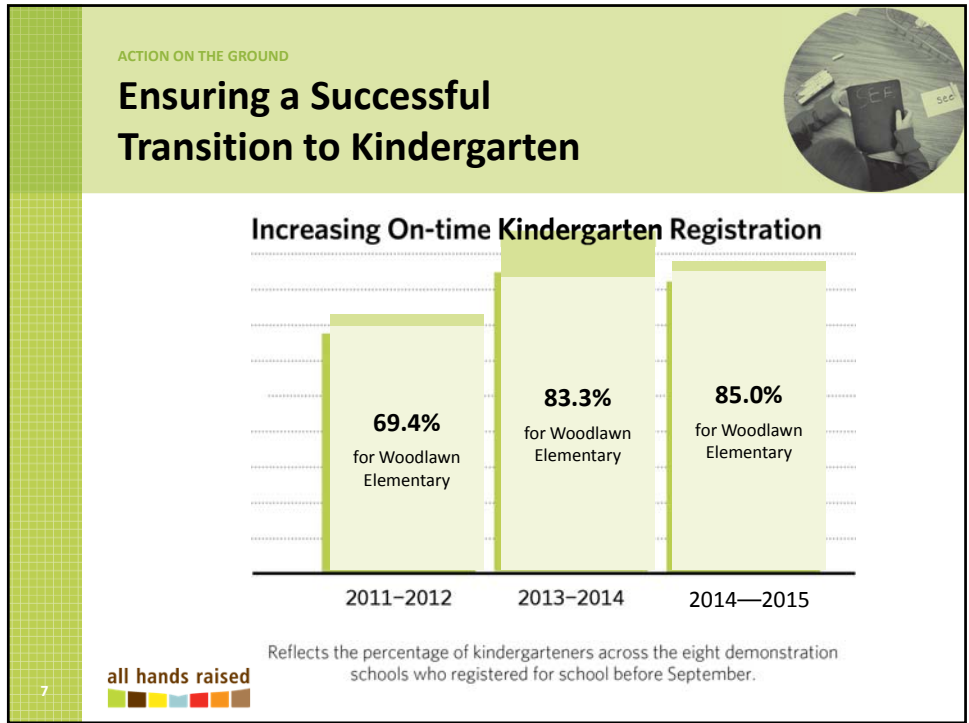
all hands raised

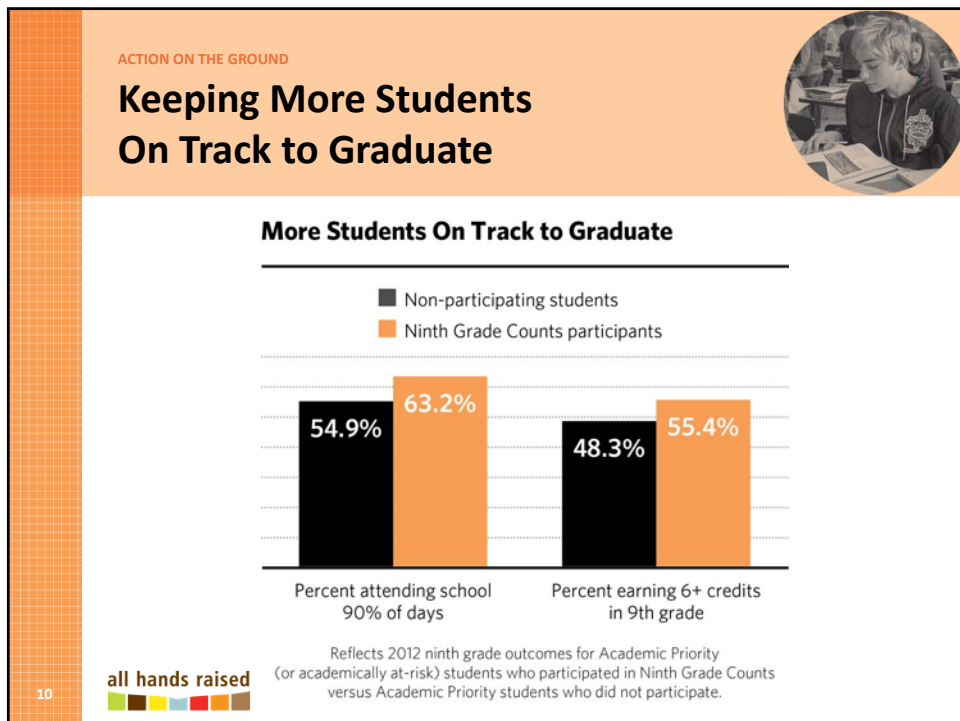
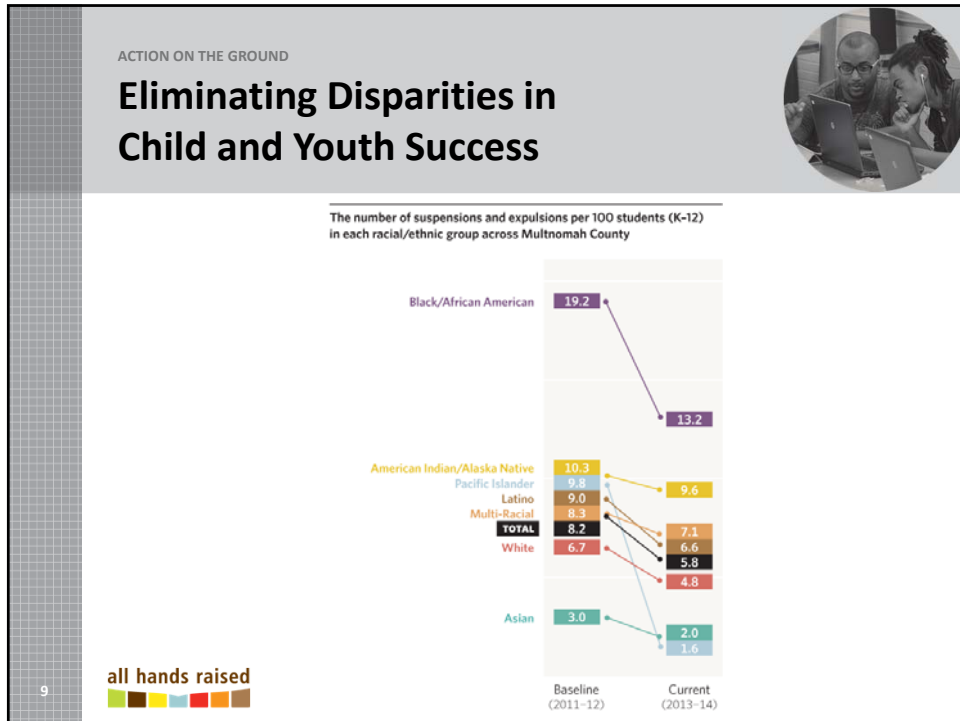
5

## Demonstration Sites




6



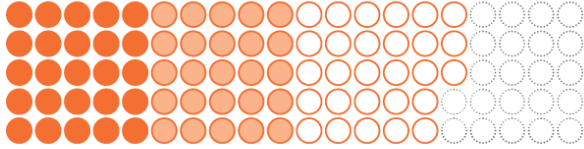


ACTION ON THE GROUND

## Strengthening the Pathways From High School to College and Career



**1 out of 4 ninth graders complete any kind of post-secondary education**




- Complete Post-Secondary
- Enroll in Post-Secondary
- Complete High School
- Do Not Complete High School

**14/100** American Indian/Alaska Native students  
**32/100** Asian & Pacific Islander students  
**13/100** Black/African American students  
**9/100** Latino students  
**30/100** White students

11

all hands raised




## Goal and Strategy Areas

- **GOAL:** Increase enrollment and persistence in post-secondary
- **Strategy 1:**
  - Phase 1 – Align financial aid coaching and transition support
  - Phase 2 – Strengthen student supports to ensure student retention
- **Strategy 2:** Strengthen pipeline to trades and skilled labor

12

all hands raised



## Working to Increase FAFSA Completion Rates Countywide

	2014 Total	So far this year (as of 3/20/2015)	This date last year
Benson	58.3%	41.9%	50.6%
Cleveland	66.5%	58.2%	56.2%
Franklin	64.8%	53.6%	53.1%
Grant	68.2%	65.7%	60.2%
Jefferson	54.0%	49.1%	38.0%
Lincoln	58.3%	55.5%	46.7%
Madison	53.6%	53.9%	44.6%
Roosevelt	41.4%	33.3%	29.3%
Wilson	64.6%	52.2%	53.5%
<b>PPS District wide</b> <small>(comprehensive high schools only)</small>	60.6%	53.4%	50.1%
<b>Countywide</b> <small>(comprehensive high schools only)</small>	55.2%	44.1%	42%

13

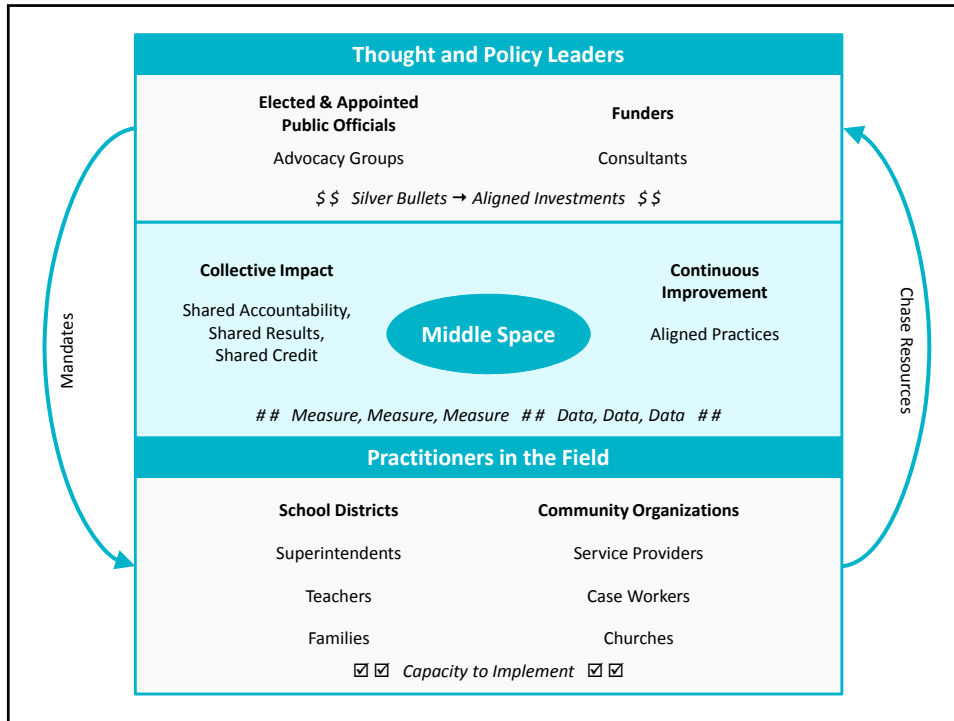
## Action to Increase FAFSA Completion

- Launched “FAFSA Squad” – Expert college access volunteers deployed to support your schools’ FAFSA events
- Brokered data sharing agreement with the state – real-time completion status information now available to all counselors for all students, by name



all hands raised

14



## PPS Participation in the AHR Partnership

Group/Committee	PPS Team Member
<b>Governance of the Partnership:</b>	
Leadership Council	Carole Smith
Data Committee	Sarah Singer Joe Suggs
Steering Committee	Lorenzo Poe
<b>Collaboratives:</b>	
Communities Supporting Youth	Korinna Wolfe Carla Gay Dunya Minoos Ben Keefer (George Middle School Principal) Beth Shelby (James John Principal) Andrea Porter-Lopez (Woodlawn Principal)
Early Learning Multnomah	Nancy Hauth
Eliminating Disparities	Carole Smith
Ninth Grade Counts	Jocelyn Bigay Shay James Kelley Duron
High School to College and Career	Shay James Kelley Duron Nicole Kappes-Levine Jeanne Yerkovitch
PPSF Equity Fund	Carole Smith Antonio Lopez David Wynde Sarah Singer Lorenzo Poe Korinna Wolfe Sheri Lee Erin Barnett



## PPS Foundation and Equity Fund Impacts

**\$3.25 million**

Raised by PPS Local School Foundations in 2013-2014

**43**

Active Local School Foundations

**\$898,000**

PPSF Equity Fund Grants Awarded for 2015-2016

**43**

PPS Schools & Alternative Programs Received PPSF Equity Grants

**396**

Teachers and Staff funded in part or in full by PPS Local School Foundation Investments for 2014-2015

totaling **42.27 FTE** and **20** contract workers

all hands raised

17

