



PORTLAND PUBLIC SCHOOLS

District CTE & Benson Programming Follow Up

October 30, 2018



PORTLAND PUBLIC SCHOOLS

Agenda

The purpose of tonight's presentation is to provide the board information that was requested at the CTE working session on September 25, 2018.

Topics Include:

1. **Timeline & Context**
2. Multiple Pathways Programming
3. Benson Configuration
4. CTE Programming
5. Benson Modernization Timeline
6. Staff Recommendations





PORTLAND PUBLIC SCHOOLS

Timeline & Context

From 2012 High School System Design Report:

- ▶ A **system of community comprehensive schools** that guarantee students access to rigor and support, with well-rounded course offerings, including college-credit opportunities, art, music and world languages.
- ▶ A **focus school system** that promotes districtwide access to schools with a unique educational approach or focus in one or two areas.
- ▶ A comprehensive assessment of our **alternative education option programs** to ensure these programs are graduating students ready for college and career.
- ▶ Renewed emphasis on **career-related learning** - both at Benson as a CTE focus school and within other focus and community schools.
- ▶ It proposes a system of **seven community comprehensive schools** - Cleveland, Franklin, Grant, Lincoln, Madison, Roosevelt and Wilson -- not eight.
- ▶ The system of **focus schools** includes Benson Polytechnic High School, Jefferson High School, and existing charter schools.




PORTLAND PUBLIC SCHOOLS

Timeline & Context

From 2012 High School System Design Cont'd:

The Former Superintendent proposed that Benson Polytechnic High School would:

- ▶ Offer a four-year program of career technical education (CTE)
- ▶ Serve approximately 425 to 850 students full-time on the campus
- ▶ Enable students to pursue one or more in-depth career focused programs
- ▶ Benson would continue to have an athletic program; the number and type of teams would be dependent on student interest
- ▶ Benson would also continue to offer significant extracurricular activities with a focus on opportunities that support career program strands
- ▶ The task force also recommends a framework for CTE-related programming across our schools"


 **PORTLAND PUBLIC SCHOOLS**


BOE Resolution 5160

RESOLUTION

1. The Board of Education directs the Superintendent or her designee to develop education specifications and master plan the Benson Campus to the indicated student capacities:
 - Benson Polytechnic High School: common areas and classrooms for 1,700 students
2. The Board of Education directs the Superintendent or her designee to prepare an analysis of location options for Alliance Professional Technical High School, including the Benson Campus and other locations across the District. This analysis should further include other Multiple Pathways to Graduation programs and be presented to the Capital Bond Committee and then brought to the full board in January 2016 as part of the overall facility usage embedded in the enrollment balancing process.
3. At the time when the referenced analysis is brought forward, the Board will make the final decision about the location of Alliance Professional Technical High School.
4. Staff will commence with the Education Specifications for Alliance with a capacity of 500 students.


C. Sylvester November 3, 2015

 5

 **PORTLAND PUBLIC SCHOOLS**

Timeline & Context

Timeline	Actions
Spring 2016 <i>Internal Action</i>	<ul style="list-style-type: none"> Focus group meetings to determine space needs for MPG were completed. MPG community advocated for whole building solutions.
9/13/2016 <i>Internal Action</i>	<ul style="list-style-type: none"> Initial space needs for Alliance & MPG was discussed with Senior Leadership
02/07/2017 <i>Internal Action</i>	<ul style="list-style-type: none"> Ed Options Review Report Completed
07/01/2017 <i>Internal Action</i>	<ul style="list-style-type: none"> School Improvement Bond Committee dissolved

 6



PORTLAND PUBLIC SCHOOLS

Agenda

The purpose of tonight's presentation is to provide the board information that was requested at the CTE working session on September 25, 2018.

Topics Include:

1. Timeline & Context
2. **Multiple Pathways Programming**
3. Benson Configuration
4. CTE Programming
5. Benson Modernization Timeline
6. Staff Recommendations




PORTLAND PUBLIC SCHOOLS

Multiple Pathways Programming

Schools and Programs currently located on the Benson site:

- **Reconnection Center School (RC):**
 - ½ day transition school co-located w/Alliance HS at Benson campus
 - Enrollment fluctuates between 28-45 students
- **Teen Parent Services Program**
 - Serves Alliance, RC, Benson HS pregnant & parenting students
 - Enrollment fluctuates between 7-15 students
- **Alliance Alternative HS on Benson Campus**
 - Rolling enrollment; new students every Monday during school year
 - Students graduate throughout the year
 - Serves 100-150 students at a time
- **Clinton DART School**
 - Serves students in DHS and/or Tribal Child Welfare Foster Care group homes also receiving mental health treatment
 - Serves 20-45 students




 **PORTLAND PUBLIC SCHOOLS**


Multiple Pathways Programming

Schools and Programs currently located on the Benson site cont'd:

- **Reconnection Services:**
 - Serves disengaged or un-enrolled students and their families
 - Intake for students for placement to an appropriate school

- **Portland Evening and Summer Scholars**
 - Districtwide credit recovery opportunities offering all graduation requirement coursework weeknights during the school year and daily each summer.
 - Evening: Serves 500 -800 students
 - Summer: Serves 1,500-2,000 students

 9

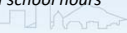
 **PORTLAND PUBLIC SCHOOLS**

Multiple Pathways to Graduation (MPG)

Program/Service*	# of Students Served on Benson Campus	Time on Campus
Reconnection Center School	25-45	8:00 am – 7:00 pm, M-Th
Teen Parent Program	7-15	8:00 am – 5:00 pm, M-F
Alliance HS (Benson Campus only)	100-150	8:00 am – 7:00 pm, M-Th
Clinton DART School	20 -35	7:00 am – 5:00 pm, M-F

Program/Service**	# of Students Served on Benson Campus	Time on Campus
Reconnection Services	Intake for student placement	Office hours: 8:00 am – 5:00 pm, M-F
Portland Evening Scholars (PES) Summer Scholars (SS)	PES: 500-800 SS: 1,200 – 1,500	Evening Summer

**Programs require classrooms and/or office spaces*
*** Programs require office space and use of classrooms; does not overlap with Benson traditional school hours*
All space needs to be determined in collaboration with OSM & Architects





PORTLAND PUBLIC SCHOOLS

Staff Recommendations – Multiple Pathways

Implement a Benson Modernization Plan that develops a campus for a total of 1,700 students that houses:

- Benson Polytechnic HS as a focus option comprehensive high school with enhanced CTE programming -up to 1,450 students *and*
- Continue to co-locate Multiple Pathways Programs, including Alliance, at the Benson campus -up to 250 daytime students. Sufficient flexible classroom and office support space should be incorporated into the Benson Modernization plan.

In addition:

- Benson DAG committee should integrate MPG stakeholders to inform the overall dedicated and shared space design.
- Enhanced CTE programming options on the Benson campus should be open and accessible to Multiple Pathways (Alliance and Portland Evening & Summer Scholars) students.



PORTLAND PUBLIC SCHOOLS


Agenda

The purpose of tonight's presentation is to provide the board information that was requested at the CTE working session on September 25, 2018.

Topics Include:

1. Timeline & Context
2. Multiple Pathways Programming
3. **Benson Configuration**
4. CTE Programming
5. Benson Modernization Timeline
6. Staff Recommendations




 PORTLAND PUBLIC SCHOOLS

Benson Polytechnic Design Configuration Options:

	A <i>Current</i> <i>Focused Comprehensive + CTE</i>	B <i>Hybrid Model</i>	C <i>District-Wide Hub</i>
Grades	9-12	11-12	9-12
School Affiliation	Benson Polytechnic Focus Option High School	Home High School	Home High School
CTE + Core	Highly aligned CTE + Core	Core at Home HS CTE at Benson (11-12)	Core at Home HS CTE at Benson (9-12)
Criteria	<ul style="list-style-type: none"> • Application required • Grades 9 & 10 take CTE exploratory rotations • Grades 11 & 12 take courses in a chosen CTE program of study 	<ul style="list-style-type: none"> • Grades 11 & 12 attend a morning and/or afternoon shift (½ day schedule) - OR - • Grades 11 & 12 attend on an alternating all-day A Day/B Day Schedule; e.g. Benson A Day /Home HS B Day • 9-10th grade are Benson students only 	<ul style="list-style-type: none"> • Transportation provided by PPS • Students (9-12) travel back and forth between their home HS and Benson on a regular schedule, period by period • Students may take 1 or more CTE classes at Benson
Building Implications	Current Comprehensive & CTE Spaces	Would required both Comprehensive & CTE Spaces	Would require CTE Spaces only


13

 PORTLAND PUBLIC SCHOOLS

For Board Consideration

Immediate Decisions (time sensitive)	Implications to Benson Project
Configuration: <ul style="list-style-type: none"> • Comprehensive Focus Option • Hybrid Model • CTE HUB Model 	<ul style="list-style-type: none"> • If the current Benson master plan cannot support a configuration adjustment, then the project may be put on hold until those space needs can be identified and worked into the plan (scheduled phase I opening - 2022) • OSM projects significant changes would push back project to a 2023 phase 1 open
Inclusion of Additional Programming	<ul style="list-style-type: none"> • The project team should be able to keep the current schedule of opening phase 1 in 2022 if any additional programs can conform to the current Benson Master Plan.


NOTE: Current Master Plan and building design are based upon 2015 Board resolution directing a comprehensive approach for 1,700 students

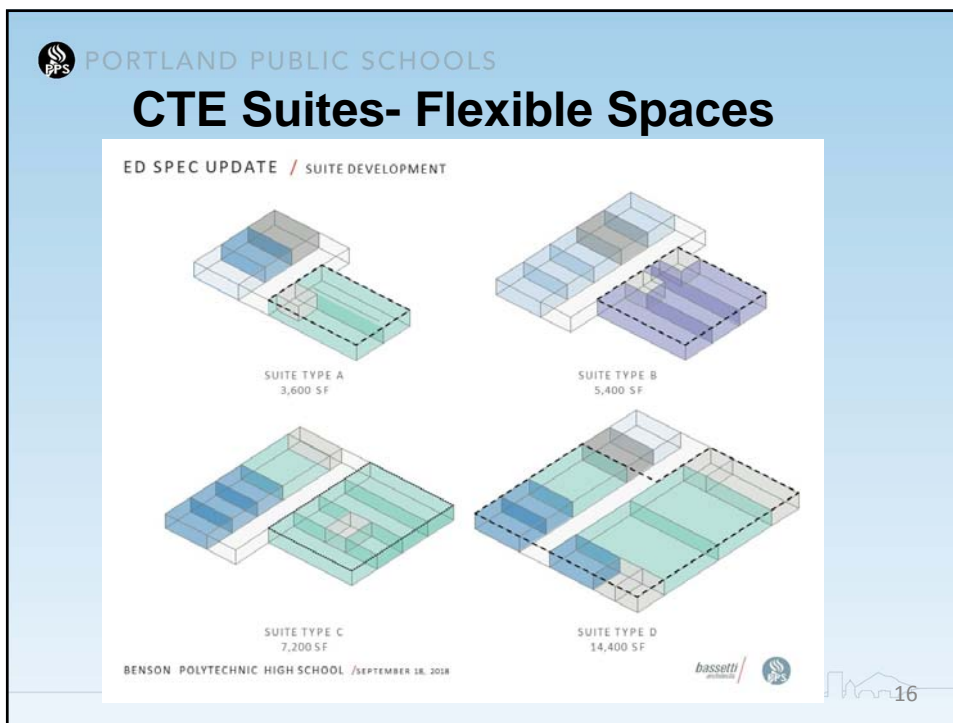
 14

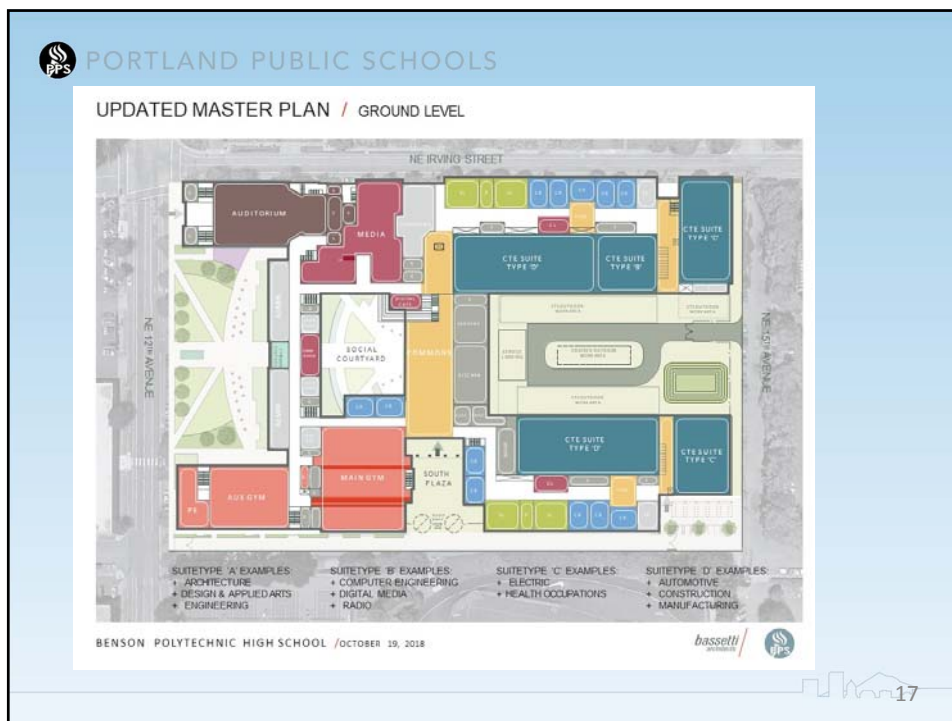
PPS PORTLAND PUBLIC SCHOOLS


CTE Suites- Flexible Spaces Examples

SUITE TYPE A	PREVIOUS AREA		REVISED D SPEC AREA		UTILIZATION RATE		TEACHING STATIONS		2016-17 STAF COUNT
	EXIST	PREV DESIGN	PROPOSED	+ ADJACENT	2016-17	PROPOSED	2016-17	PROPOSED	
Architecture	3,397 SF	4,360 SF	3,600 SF	900 SF	64%	75%	2	2.5	2
Design and Applied Arts	1,939 SF	3,110 SF	3,600 SF		66%	75%	1	2	1
Engineering	3,714 SF	4,985 SF	3,600 SF		12%	75%	1	2	0.5
SUITE TYPE B									
Computer Engineering	5,956 SF	4,725 SF	5,400 SF		44%	75%	2	3	1.5
Digital Media	6,994 SF	7,160 SF	5,400 SF	900 SF	46%	75%	2.5	3	3
Radio Broadcasting	5,182 SF	5,709 SF	5,700 SF		N/A	75%	1	2	1
SUITE TYPE C									
Health Occupations	7,899 SF	11,880 SF	7,200 SF	3,150 SF	61%	75%	5	6	4.5
Electrical	8,263 SF	9,900 SF	7,200 SF	900 SF	31%	75%	4	3	2
SUITE TYPE D									
Automotive	26,187 SF	19,460 SF	14,400 SF		33%	75%	6	6	2.5
Construction (w/Math Tech)	10,066 SF	14,275 SF	14,400 SF	1,800 SF	65%	75%	4	6	4
Manufacturing	27,145 SF	23,460 SF	14,400 SF		24%	75%	5	5	1.5

 15







 PORTLAND PUBLIC SCHOOLS

For Board Consideration

- Changing Benson from its current configuration to one of the CTE options (B or C) may have cost implications and logistical challenges for bussing, scheduling and staffing
- Collocate existing Multiple Pathways to Graduation (MPG) programming into the current Benson Modernization plan
- Recommend MPG schools and programs fit into the current master plan with small revisions
- Investigate the square foot area requirements and small changes necessary to spaces MPG would utilize within the current master building design

 18


 PORTLAND PUBLIC SCHOOLS


Agenda

The purpose of tonight’s presentation is to provide the board information that was requested at the CTE working session on September 25, 2018.

Topics Include:

1. Timeline & Context
2. Multiple Pathways Programming
3. Benson Configuration
4. **CTE Programming**
5. Benson Modernization Timeline
6. Staff Recommendations

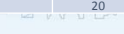
 19


 PORTLAND PUBLIC SCHOOLS

PPS CTE Graduation Rates

Students completing 1 credit in CTE

	2011-12	2012-13	2013-14	2014-15	2015-16	2016-17
PPS Students: <i>All</i>	63%	67%	70%	74%	75%	76%
CTE Students: <i>All</i>	84%	87%	89%	91%	90%	89%
CTE Students: <i>American Indian</i>	76%	54%	80%	83%	100%	100%
CTE Students: <i>Asian</i>	97%	96%	94%	99%	97%	96%
CTE Students: <i>African American</i>	75%	76%	87%	94%	93%	86%
CTE Students: <i>Hispanic</i>	83%	88%	93%	88%	85%	88%
CTE Students: <i>White</i>	82%	87%	91%	89%	81%	90%


 20

 PORTLAND PUBLIC SCHOOLS

CTE Programming


Decisions to Explore (flexible timing)	Implications to Benson Project
Specific CTE Programming/Courses	<ul style="list-style-type: none"> • The building is designed with flexible “CTE Suites” that can accommodate multiple programming needs • In current Master Plan timeline, March 15, 2019 is the deadline to determine specific programming options. • This coincides with our needs analysis and asset mapping timeline • The project team should be able to keep the current schedule of opening phase 1 in 2022 if the additional programs can conform to the current Benson Master Plan
15,000 sq. ft. currently unassigned in current building master plan	<ul style="list-style-type: none"> • Could be used for CTE program expansion
District CTE 5-year Master Plan	<ul style="list-style-type: none"> • Work will include asset analysis, needs assessment, labor market projections and student interest

21

 PORTLAND PUBLIC SCHOOLS

Actions for CTE Staff

- Maintain current CTE programs district wide
- Conduct a system-wide needs assessment, asset analysis, and quality assessment
- Conduct a labor market analysis
- Align programs of study, district-wide
- Conduct postsecondary and career pathway mapping
- Design and implement a district-wide systems/programming and a 5-year Career Learning/CTE master plan

 22

Agenda

The purpose of tonight's presentation is to provide the board information that was requested at the CTE working session on September 25, 2018.

Topics Include:

1. Timeline & Context
2. Multiple Pathways Programming
3. Benson Configuration
4. CTE Programming
5. **Benson Modernization Timeline**
6. Staff Recommendations



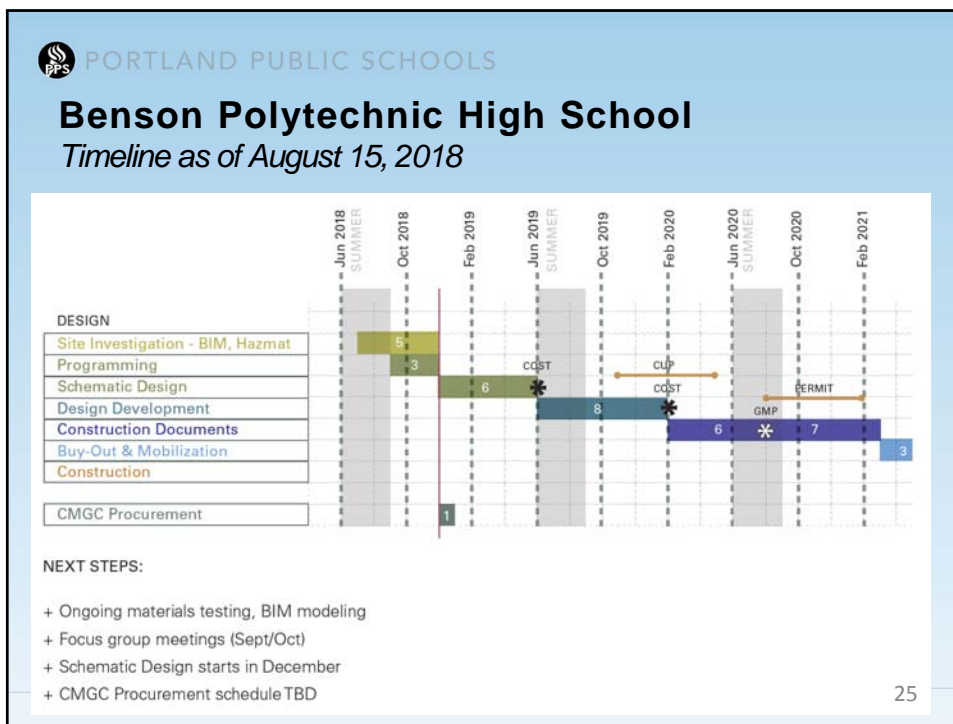
Current Benson Modernization Timeline

Notes from BENSON TECH STEERING COMMITTEE #5 /OCTOBER 19TH, 2018:

- BOARD WORKSESSION - NOVEMBER 6
 - Ed Spec background and approach summary
 - DRAFT Program summary, with building target area at 368,000 SF and modular suite approach
 - DRAFT Utilization rate table showing 1,700 student capacity within range
 - DRAFT Revised master plan and site plan with new spatial adjacencies
 - Cost model information showing project budget target. Cost reduction strategies identified
- BOARD MEETING - DECEMBER 11
 - Ed Spec report with detailed background and approach, program, utilization table, and room data sheets.
 - Final master plan and site plan with new spatial adjacencies
 - Detailed cost estimate with updated budget.

NOTE: Current Master Plan timelines are based upon 2015 Board resolution directing a comprehensive approach for 1,700 students





PORTLAND PUBLIC SCHOOLS

For Board Consideration

- Include MPG in the current Benson Master Plan design with minimal changes to ensure continuity with the current proposed modernization timeline
- Implement a Benson Modernization Plan that develops a campus for a total of 1,700 students that houses:
 - 1,450 Benson Polytechnic HS students
 - 250 MPG/Alliance students

26



PORTLAND PUBLIC SCHOOLS

Contact Information

Korinna Wolfe

Area Director, Multiple Pathways to Graduation

kwolfe@pps.net

Joe LaFontaine

Area Assistant Superintendent, High Schools

jlafontaine@pps.net

Aurora Terry

Senior Director, College & Career Readiness

aterry@pps.net

Jeanne Yerkovich

Director, Career & Technical Education

jyerkovi@pps.net

