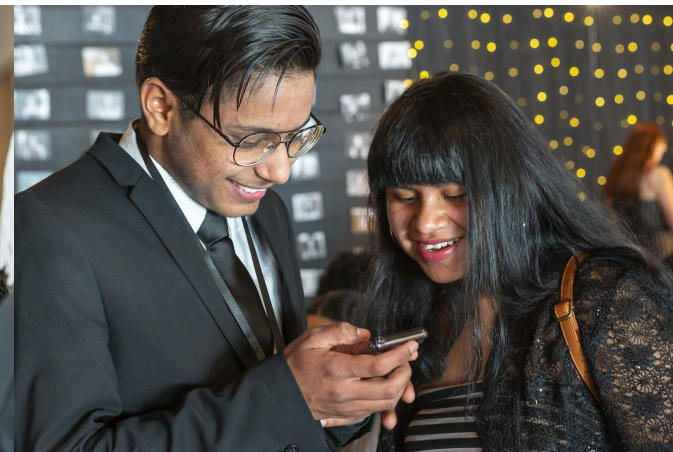




# Community Engagement and Student Voice

November 2020



# Tonight's Objectives

Tonight, we expect to:

1. Provide an introduction to the driving values, goals, and framework of PPS' community engagement and student voice infrastructure.
2. Draft shared goals and expectations for community engagement and student voice between PPS staff and board.
3. Formulate shared purpose statement for a reimagined Community Advisory Council structure.



# Introduction

In 2018, the PPS Board of Education and Superintendent launched a citywide conversation to tap into the wisdom of our students, our educators, and our community, to reimagine PPS for a rapidly changing world. **It was a powerful experience to unleash our collective imagination.**

This new vision--[PPS reImagined](#)--is inspiring and courageous. And while school district leaders, administrators, teachers and support staff are critical drivers of realizing our community's vision, **we cannot do it alone.**

For every student to realize the elements of the Graduate Portrait, we, as **one community**, must embrace our **collective responsibility**. That means aligning our efforts to clearly define and openly share our goals throughout our "village," engaging meaningfully with students, families, community leaders, youth advocates and mentors, and create partnerships with business and philanthropic leaders.



# PPS reimagined

## Preparing Our Students to Lead Change and Improve the World

A graduate of Portland Public Schools will be a compassionate critical thinker, able to collaborate and solve problems, and be prepared to lead a more socially just world.



### Core Values

- Students at the Center
- Racial Equity and Social Justice
- Honesty and Integrity
- Excellence
- Respect
- Relationships
- Creativity and Innovation
- Partnerships and Collaboration
- Grounded in the Portland Spirit
- Joyful Learning and Leadership

### System Shifts

- A Connected and Transformative School District
- Racial Equity Aligned Systems and Structures
- Schools as Community Hubs
- Supports for Global Stewards and Ambassadors
- A Culture of Physical and Emotional Safety



# #1DistrictPPS





# RESJ Goals

## Community Engagement

Develop coherent frameworks that embolden more community participation in relevant and substantive ways, informing district policy and administrative decisions.

Elevate the importance of interdependence among PPS and the broader community, ensuring decisions embody our community's voice.

Create opportunities that build our families' capacity to be informed and actively engaged in their children's education and in school improvement efforts, especially students and families of color.

## Student Leadership

Increase the activity participation of students of color in leadership opportunities (i.e. student government, clubs/affinity spaces, site council) across each PPS middle and high school campus.

Establish district-wide alignment and equitable representation in support of affinity groups based on race and ethnic representation (i.e. MEChA, Black Student Unions, Native American Student Unions, etc.)

Facilitate intentional and intersectional group gatherings (i.e. student summits/conferences) that increase leadership and professional skills of all students, and in particular students of color.

## Student Voice

Center student voice in the districts decision making processes so that they:

1. have ample opportunity to discuss how they experience school,
2. engage in facilitated discussions where they can express various viewpoints even if they are counter to dominant narratives,
3. have a system for providing feedback to district leadership regarding school issues, suggestions and desires and
4. have multiple means of expressing their perspectives regarding district or school issues.

Increase opportunities for students to identify and work on equity issues impacting their educational experiences with District leadership.

Actively involve students in district improvement efforts and meetings, developing the capacities to address the issues they identify alongside district leadership.

# Community Engagement & Student Voice

The **Department of Community Engagement and Student Voice** serves as a central conduit for PPS decision makers to listen to, learn from and involve key stakeholders in PPS' decisions and policy shifts, in service of accelerating the conditions for student achievement.



## Core Functions:

1. Building the District's capacity to engage authentically with our diverse community
2. Center Community Voice and Experience in District Decision Making and Policy Change
3. Elevate systems shifts with the leadership and expertise of PPS students





# Department Values

## Racial Equity & Social Justice

We believe diverse communities have cognition and insight that help the district's engagement, and goal of eliminating the achievement and opportunity gap.



## Deep Democracy

We believe in addressing and challenging power dynamics that prevent Black, Native and Communities of Color from fully participating in our decision-making processes. This includes increasing language and ability accessibility.

## Youth Empowerment

We believe that student voice is an essential and meaningful ingredient in our decision-making and seek to amplify their lived experience in our district improvement efforts.





# Team



**Jonathan Garcia**  
Chief Engagement Officer



**Shanice Brittany Clarke**  
Director, Community Engagement



## Community Engagement Specialists



**Maria Hernandez**



**Yian Saechao**  
*(Student Engagement)*



**Ezell Watson**

## Community Agents



**Mirna Ghamrawi**



**Nelson  
Perez-Gonzalez**



**Olga Filinova**

# Spectrum of Community Engagement



We provide balance and objective information to our community.

**INFORM**

Work with our community to make sure that their concerns and aspirations are considered and understood.

**INVOLVE**

District-decision making as a result of autonomous advocacy from the community.

**COMMUNITY POWERED ACTION**

We seek and obtain feedback from our community on analysis, issues, alternatives and decisions.

**CONSULT**

Partner with the community in each aspect of the decision-making.

**COLLABORATE & EMPOWER**



# (re)Defining the System



Funded by Meyer Memorial Trust, (re)Defining the System is a community-driven effort that helps co-create the conditions, resources, and priorities needed to transform opportunities for thought partnership throughout PPS.

**Steering Team**  
 Brown Girl Rise  
 All Born In  
 Unite Oregon  
 APANO  
 Coalition of Black Men  
 Momentum Alliance

**Building the Team**  
 DECEMBER  
 Recruitment to build a steering team of youth-led organizations and community partners.



**Steering Team Kick-Off**  
 FEBRUARY 21  
 Steering Team members began visioning opportunities for thought partnership.



**Steering Team Strategy Sessions**  
 MARCH 1-12  
 Sessions helped shape a strategic focus on student sense of belonging, and climates accessible for their engagement.



**Community Engagement**  
 MARCH 1-12  
 Targeted conversations, especially with the support of community organizations, reached roughly 500 stakeholders for their hopes and priorities.



**Steering Team Strategy Sessions**  
 OCTOBER-NOVEMBER  
 Revisiting the priorities of community for a formal framework, with an update on the impact of CDL.



**Community Engagement**  
 NOVEMBER  
 Black and Native high school students were reached to share ways student voice can shape district decision-making.



**Phase Completed**  
 NOVEMBER 12  
 At the final Steering Team session, nearly draft elements of the framework, and key long-term strategies were presented for feedback.



**Board Study Session**  
 NOVEMBER 17  
 An update on the Framework for Student Voice & Community Engagement At today's Board of Education Study Session.

2019

2020

# Framework for Student Voice & Community Engagement



## Connections →

Uplift student voice and Black, Indigenous, Mixed, and student of color leadership. Use multiple means so youth may operate with personal autonomy, including technology

## Confidence →

Cultivate student-centered environments and design, accessible to students with different abilities.

## Cognition →

Honor student and community intelligence to lessen racist inequities impacting our work.

## Capabilities

Organize young people to shift the educational system, and acknowledge current social issues with

# PPS Engagement Initiatives: At-A Glance

(re)Defining the System (funded by Meyer Memorial Trust)

District Student Council

Student Success Act

Strategic Plan

Naming and Defining PPS Places

Regional Coordination: Student Affinity

Conferences

Community Advisory Council Technical  
Support

Annual Budget Engagement

PPS Re-Opening

Sense of Belonging

Policy Engagement Technical Support



# Discussion #1



## Our Shared & Collective Success

10 Minutes





# Community Advisories

|    |  |   |
|----|--|---|
| 01 | <b>Community Advisory Councils</b>     | <ul style="list-style-type: none"><li>• School Board and/or Superintendent sponsored advisory groups</li><li>• Only Student/Parent/Community Member Participation.</li></ul>    |
| 02 | <b>Joint Committees or Task Forces</b> | <ul style="list-style-type: none"><li>• Set to accomplish a short-term task, PPS can establish work groups that can include community members as active participants.</li></ul> |
| 03 | <b>School-Based Leadership Groups</b>  | <ul style="list-style-type: none"><li>• School Site Councils</li><li>• Student-Leadership Groups</li></ul>  |



# Community Advisory Councils

A Community Advisory Council (CAC) is a District-established collective of diverse PPS community members, especially students and parents/guardians, that provide direct advisement to the PPS Board of Education, serving as community ambassadors and conduits for the shared voices of our community.



## Proposal:

- Shared Agreement - Staff and School Board to collectively establish CACs (with advisement from community members), including developing an operations manual detailing each organization's purpose, shared agreements and overall structure.
- PPS School Board appoints membership to CACs from their respective zones (7 member CACs + at-large members). Superintendent appoints staff liaison to the CACs.







# Community Advisory Councils

10 Minutes





**NORTH PORTLAND**  
**LOVES**  
**OUR GRADS**  
**WE ARE ROOSEVELT!**

**GO RIDERS!**  
**ROOSEVELT**  
**GRAD**  
**2020**